



The Knightsbridge Apartments

Knightsbridge, SW7

£26,000 per month
(£6,000 per week)

Stunning lateral apartment comprising part of a much sought-after contemporary development located opposite Hyde Park in the heart of Knightsbridge. The development features 24-hour concierge, pool, spa and gym facilities.



The Knightsbridge Apartments

Knightsbridge, SW7

- 24-hour concierge
- Balcony
- Pool, spa and gym facilities
- Air-cooling
- Wood flooring
- Located opposite Hyde Park



Stunning lateral apartment comprising part of a much sought-after contemporary development located opposite Hyde Park in the heart of Knightsbridge. The development features 24-hour concierge, pool, spa and gym facilities.

The accommodation is circa 1,598 sq. ft. and consists of a large reception/dining room, separate modern kitchen, three double bedrooms with built-in storage, and three bathrooms. The master suite benefits from floor to ceiling windows maximising the fantastic views and access to a balcony.

Minimum Term: 12 months
Deposit Required: £36,000.00
Local Authority: City of Westminster
Council Tax Band: H
EPC Rating: B
Furnished

Energy Efficiency Rating		
	Current	Potential
Very energy efficient - lower running costs		
A (91-100)		
B (81-90)	84	84
C (69-80)		
D (55-68)		
E (39-54)		
F (21-38)		
G (1-20)		
Not energy efficient - higher running costs		
England, Scotland & Wales EU Directive 2002/91/EC		

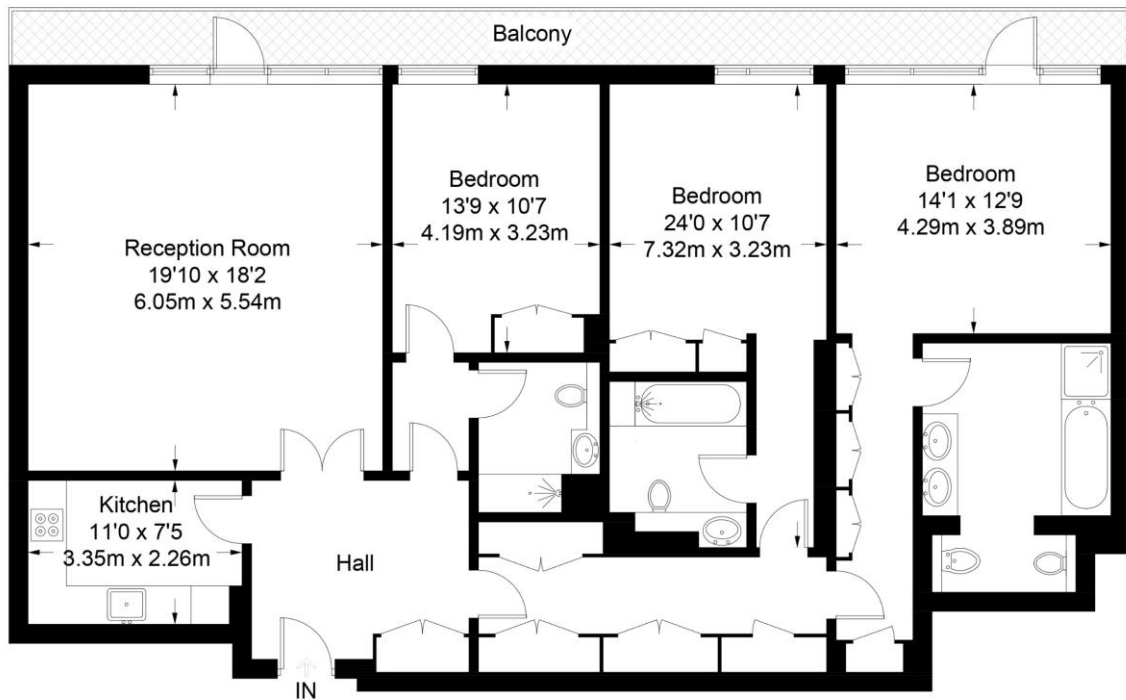
Chestertons Knightsbridge & Belgravia Lettings

31 Lowndes Street
 London
 SW1X 9HX
knightsbridglettingsusers@chestertons.co.uk
 02072353530
chestertons.co.uk

Additional tenant charges apply (fees apply to non-AST tenancies only)
 Tenancy Agreement Fee: £300
 References per Tenant/Guarantor: £60
 Inventory check (approx. £100 – £250 inc. VAT)
chestertons.co.uk/property-to-rent/applicable-fees

The Knightsbridge Apartments

Approximate Gross Internal Area = 1598 sq ft / 148.5 sq m



Eighth Floor

Not to scale, for guidance only and must not be relied upon as a statement of fact.
All measurements and areas are approximate only and have been prepared in accordance with the current edition of the RICS Code of Measuring Practice.

