



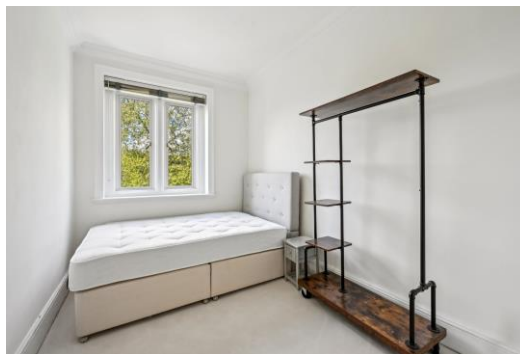
# Cadogan Place

London, SW1X

£4,246.67 per month  
(£980 per week)

A third floor apartment comprising part of a charming period property located on the much sought after Cadogan Place. The apartment, which offers an approximate 750 sq ft of living space, benefits from air-conditioning and lift access.





# Cadogan Place

London, SW1X

- Two bedrooms
- Bright
- Lift
- Overlooking Cadogan Place Gardens

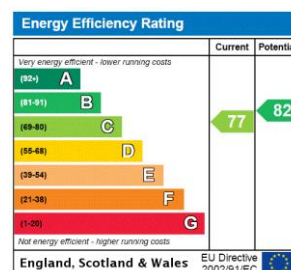


Fantastic 3rd floor apartment comprising part of a charming period property located on the much sought after Cadogan Place. The apartment, which offers an approximate 750 sq ft of living space, benefits from features that include, air-conditioning, lift access and views over Cadogan Place Gardens.

The large reception room is cleverly divided into a stylish and comfortable seating space and dining area. The master bedroom is a generous double room, and the second bedroom benefits from an en suite bathroom. There is also a separate second bathroom.

Cadogan Place is a beautiful period street located minutes away

**Minimum Term:** 12 months  
**Deposit Required:** £4,900.00  
**Local Authority:** Kensington and Chelsea  
**Council Tax Band:** G  
**EPC Rating:** C  
**Furnished**



### *Chestertons Knightsbridge & Belgravia Lettings*

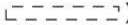
31 Lowndes Street  
 London  
 SW1X 9HX  
 knightsbridglettingsusers@chestertons.co.uk  
 02072353530  
 chestertons.co.uk

Additional tenant charges apply (fees apply to non-AST tenancies only)  
 Tenancy Agreement Fee: £300  
 References per Tenant/Guarantor: £60  
 Inventory check (approx. £100 – £250 inc. VAT)  
 chestertons.co.uk/property-to-rent/applicable-fees

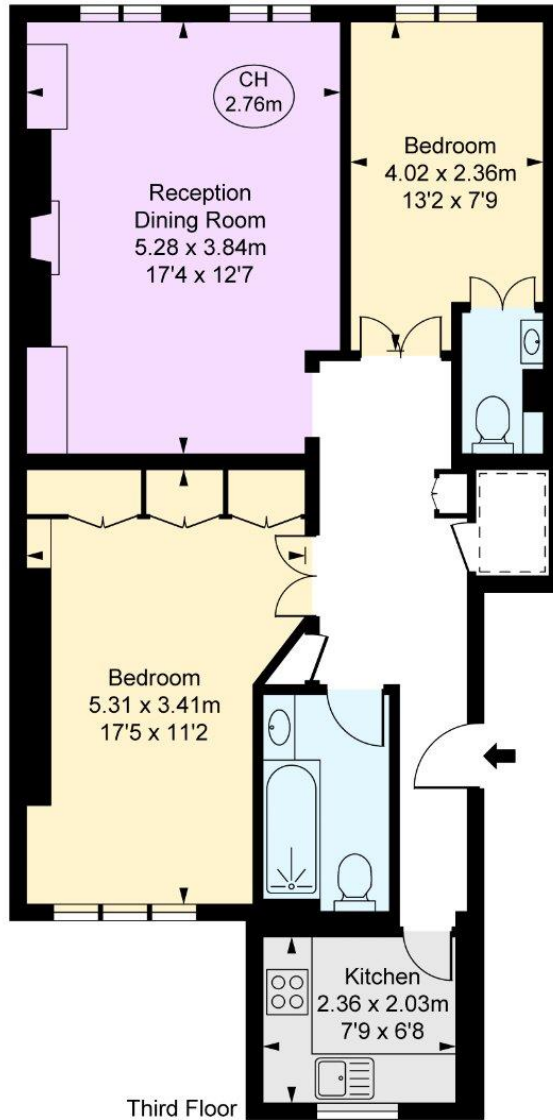


# Cadogan Place, SW1X

Approximate Gross Internal Area  
70.24 sq m / 756 sq ft

( Including restricted height  
under 1.5m  )

( CH = Ceiling Heights )



Third Floor

This plan is not to scale. It is for guidance and not for valuation purposes.  
All measurements and areas are approximate only, and have been prepared in accordance with the current edition of the RICS Code of Measuring Practice.  
© Fulham Performance

