

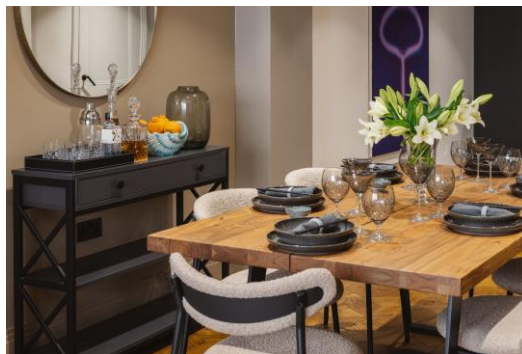


Cheval Place

London, SW7

£8,000 per month
(£1,846.15 per week)

Beautifully renovated duplex apartment arranged over an estimated 1,000 square feet. Finished to a high standard throughout and offering features that include wood flooring, underfloor heating, air-conditioning and a large private terrace.



Cheval Place

London, SW7

- Newly refurbished
- Air conditioning
- Underfloor heating
- Private terrace
- Furnished
- Modern

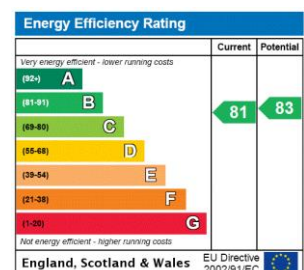


Beautifully renovated duplex apartment arranged over an estimated 1,000 square feet. Finished to a high standard throughout and offering features that include wood flooring, underfloor heating, air-conditioning and a large private terrace.

The accommodation includes a master suite with walk-in wardrobe and private terrace, open plan kitchen/reception, separate utility room, two en suite bathrooms and a guest WC.

Cheval Place is a quiet street, found just north of the Brompton Road and moments from Hyde Park. Located for easy access to Harrods and all of the internationally renowned shops and amenities that this hugely vibrant neighbourhood has to offer.

Minimum Term: 12 months
Deposit Required: £11,076.92
Local Authority: Kensington and Chelsea
Council Tax Band: G
EPC Rating: B
Furnished




Chestertons Knightsbridge & Belgravia Lettings

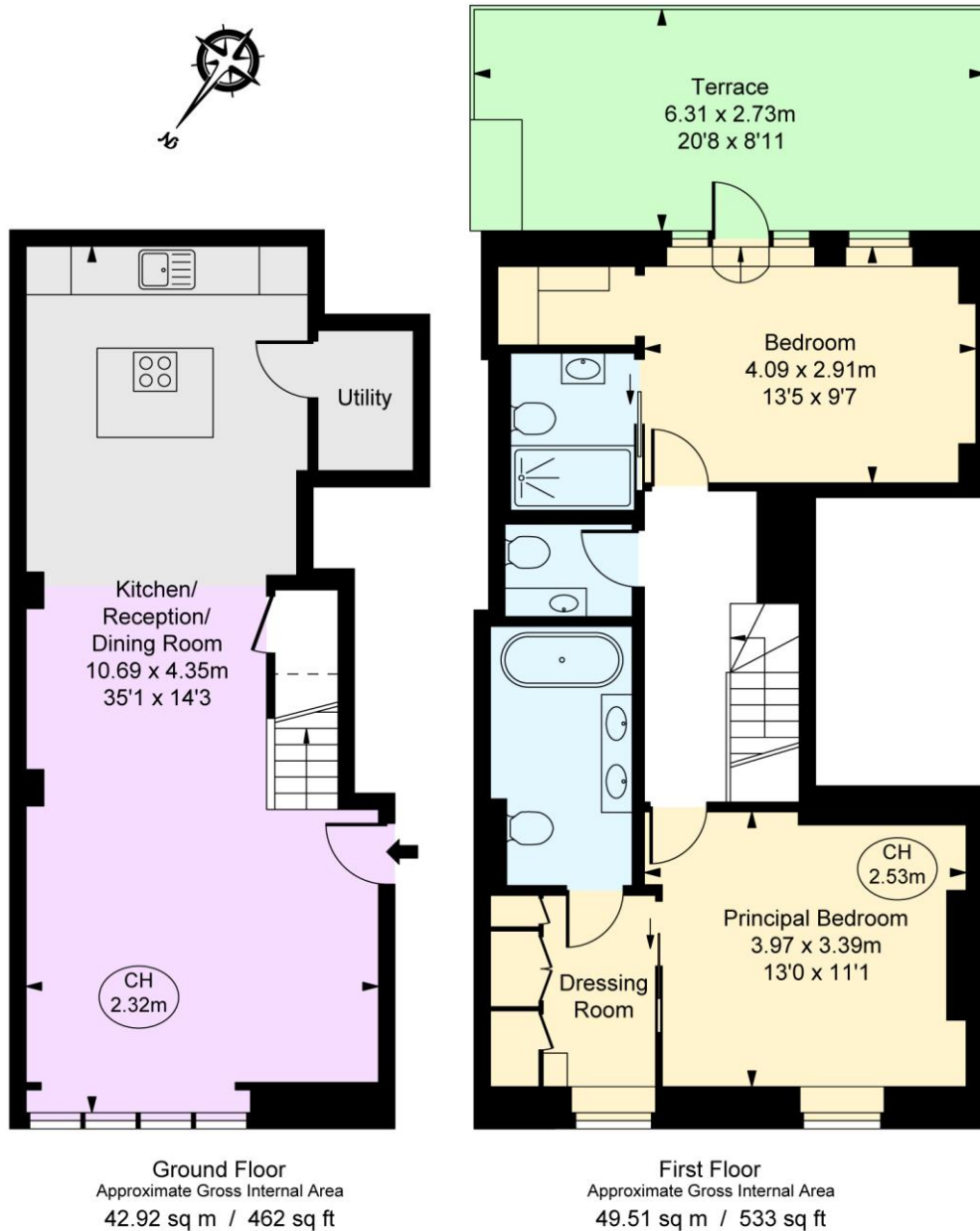
31 Lowndes Street
 London
 SW1X 9HX
 knightsbridglettingsusers@chestertons.co.uk
 02072353530
 chestertons.co.uk

Additional tenant charges apply (fees apply to non-AST tenancies only)
 Tenancy Agreement Fee: £300
 References per Tenant/Guarantor: £60
 Inventory check (approx. £100 – £250 inc. VAT)
 chestertons.co.uk/property-to-rent/applicable-fees

Cheval Place, SW7
 Approximate Gross Internal Area
92.43 sq m / 995 sq ft

(Including restricted height
 under 1.5m )

(CH = Ceiling Heights)



This plan is not to scale. It is for guidance and not for valuation purposes.
 All measurements and areas are approximate only, and have been prepared in accordance with the current edition of the RICS Code of Measuring Practice.
 © Fulham Performance