



# Brompton Place

London, SW3

£10,499.67 per month  
(£2,423 per week)

Located in a prestigious development that offers direct lift access, wood flooring, air cooling and a 24-hour concierge.



# Brompton Place

London, SW3

- Gated development
- 24 Hour concierge
- Fully furnished
- Air cooling

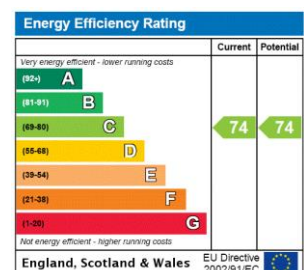




Located in a prestigious development that offers air cooling and a 24 hour concierge. The property is circa 1578 sq. ft. and comprises of two double bedrooms which include a master suite with walk-in wardrobe, two bathrooms and a spacious separate kitchen.

Ideally located in the heart of Knightsbridge next to Harrods moments from Hyde Park and the popular restaurants and boutiques that the area is famous for.

**Minimum Term:** 12 months  
**Deposit Required:** Six weeks  
**Local Authority:** Royal Borough of Kensington & Chelsea  
**Council Tax Band:** H  
**EPC Rating:** C  
**Furnished**

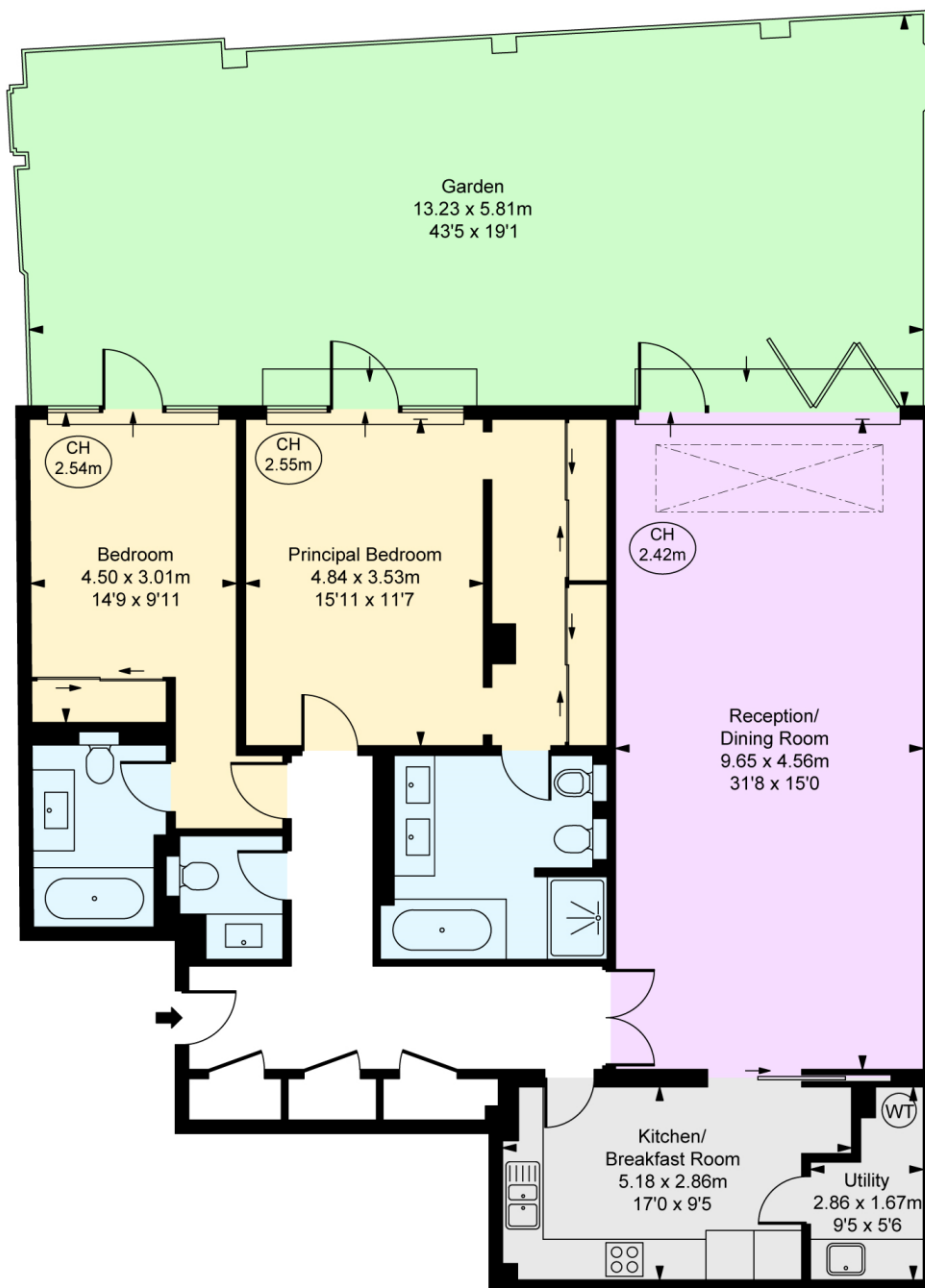


### *Chestertons Knightsbridge & Belgravia Lettings*

31 Lowndes Street  
 London  
 SW1X 9HX  
[knightsbridgelettingsusers@chestertons.co.uk](mailto:knightsbridgelettingsusers@chestertons.co.uk)  
 02072353530  
[chestertons.co.uk](http://chestertons.co.uk)

Additional tenant charges apply (fees apply to non-AST tenancies only)  
 Tenancy Agreement Fee: £300  
 References per Tenant/Guarantor: £60  
 Inventory check (approx. £100 – £250 inc. VAT)  
[chestertons.co.uk/property-to-rent/applicable-fees](http://chestertons.co.uk/property-to-rent/applicable-fees)

Harrods Court,  
Brompton Place, SW3  
Approximate Gross Internal Area  
146.62 sq m / 1,578 sq ft  
( CH = Ceiling Heights )



Ground Floor

This plan is not to scale. It is for guidance and not for valuation purposes.  
All measurements and areas are approximate only, and have been prepared in accordance with the current edition of the RICS Code of Measuring Practice.  
© Fulham Performance

