



West Eaton Place

London, SW1X

£4,100 per month
(£946.15 per week)

Charming Belgravia apartment ideally located moments from Sloane Square and Victoria. The accommodation is spread over two floors and offers features that include wood flooring and an eat-in kitchen.



West Eaton Place

London, SW1X

- Duplex apartment
- One double bedroom
- Wood flooring
- Separate modern kitchen
- Located moments from Sloane Square



Charming Belgravia apartment ideally located moments from Sloane Square and Victoria.

The accommodation is spread over two floors and consists of a spacious double bedroom with built-in storage, modern bathroom suite with shower cubicle, spacious reception and separate eat-in kitchen. The property is fitted with wood flooring throughout the principle rooms.

West Eaton Place is moments from Pimlico Road and Sloane Square, with Kings Road and Victoria Station also just a short walk.

Minimum Term: 12 months
Deposit Required: £4,730.77
Local Authority: Royal Borough of Kensington & Chelsea
Council Tax Band: G
EPC Rating: C
Furnished

Energy Efficiency Rating		
	Current	Potential
Very energy efficient - lower running costs		
A (92-100)		
B (81-91)		
C (69-80)	76	80
D (55-68)		
E (39-54)		
F (21-38)		
G (1-20)		
Not energy efficient - higher running costs		
England, Scotland & Wales EU Directive 2002/91/EC		

Chestertons Knightsbridge & Belgravia Lettings

31 Lowndes Street
 London
 SW1X 9HX
knightsbridgelettingsusers@chestertons.co.uk
 02072353530
chestertons.co.uk

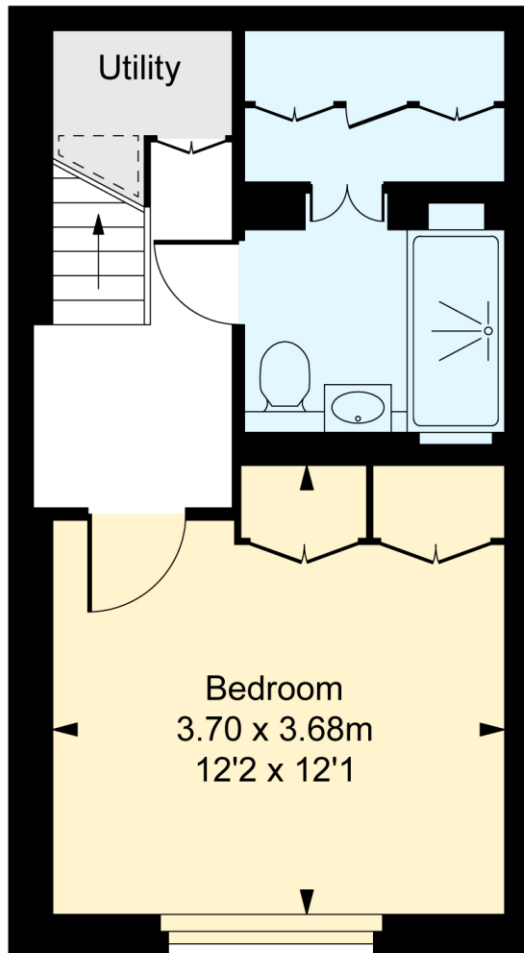
Additional tenant charges apply (fees apply to non-AST tenancies only)
 Tenancy Agreement Fee: £300
 References per Tenant/Guarantor: £60
 Inventory check (approx. £100 – £250 inc. VAT)
chestertons.co.uk/property-to-rent/applicable-fees

West Eaton Place, SW1X

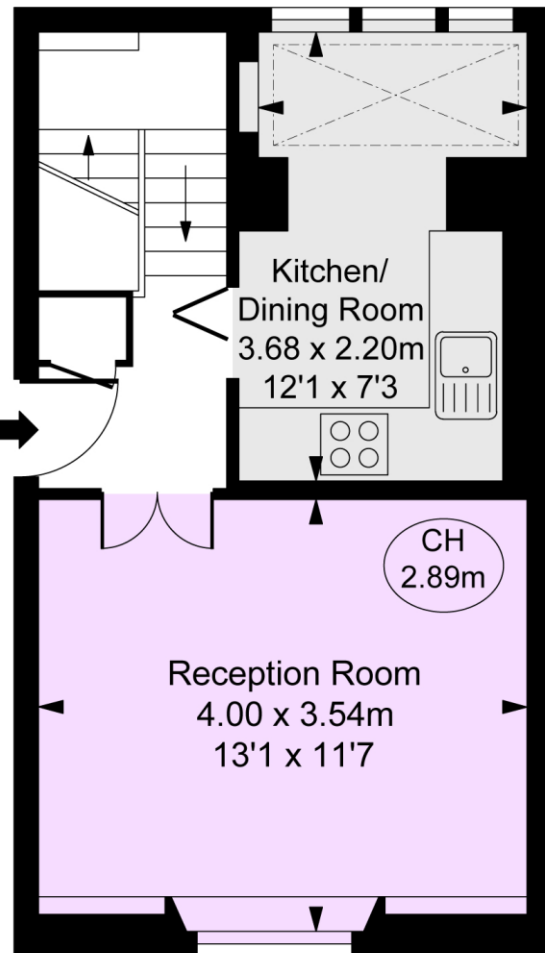
Approximate Gross Internal Area
56.16 sq m / 605 sq ft



(Including restricted height
under 1.5m [-----])
(CH = Ceiling Heights)



Lower Ground Floor
Approximate Gross Internal Area
27.03 sq m / 291 sq ft



Raised Ground Floor
Approximate Gross Internal Area
29.13 sq m / 314 sq ft

This plan is not to scale. It is for guidance and not for valuation purposes.
All measurements and areas are approximate only, and have been prepared in accordance with the current edition of the RICS Code of Measuring Practice.
© Fulham Performance