



Ebury Street

Belgravia, SW1W

£7,500 per month
(£1,730.77 per week)

A bright and modern first floor apartment situated in a popular development offering 24-hour concierge and lift access. The property is circa 1,573 sq. ft. and benefits from wood flooring throughout and a private terrace.

CHESTERTONS



Ebury Street

Belgravia, SW1W

- 24-hour porter
- Lift access
- Terrace and private balcony
- Three double bedrooms
- Wood flooring



A bright and modern first floor apartment situated in a popular development offering 24-hour concierge and lift access. The property is circa 1,573 sq. ft. and benefits from wood flooring throughout and a private terrace.

The accommodation consists of three double bedrooms with built in storage, three bathrooms, spacious reception/dining room and separate modern kitchen.

Located on Ebury Street in the heart of Belgravia, just moments from Victoria.

Minimum Term: 12 months
Deposit Required: £10,384.62
Local Authority: City of Westminster
Council Tax Band: H
EPC Rating: B
Unfurnished

Energy Efficiency Rating		
	Current	Potential
Very energy efficient - lower running costs		
A (94-100)		
B (81-91)	81	81
C (69-80)		
D (55-68)		
E (39-54)		
F (21-38)		
G (1-20)		
Not energy efficient - higher running costs		
England, Scotland & Wales EU Directive 2002/91/EC		

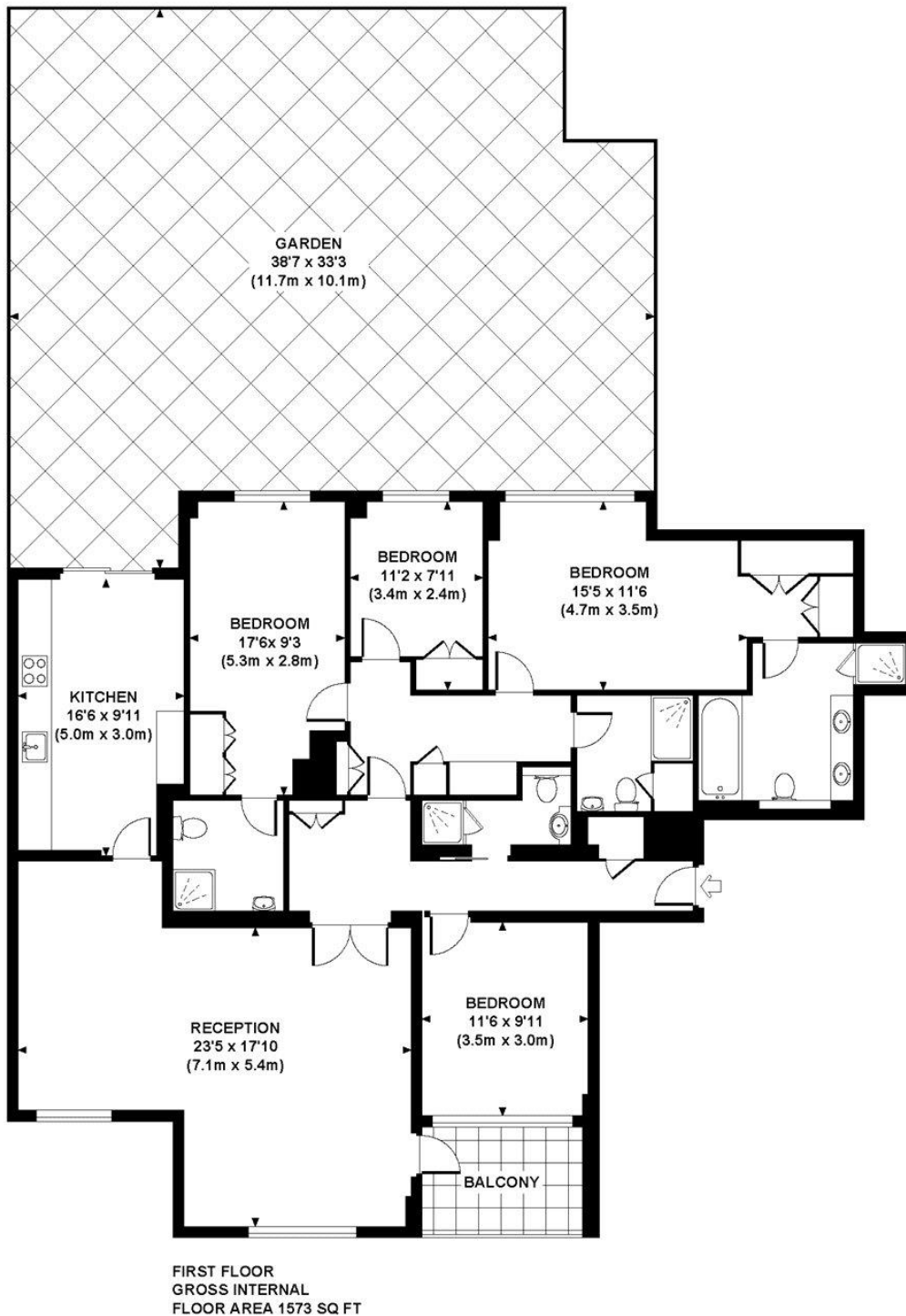
Chestertons Knightsbridge & Belgravia Lettings

31 Lowndes Street
 London
 SW1X 9HX
knightsbridgelettingsusers@chestertons.co.uk
 02072353530
chestertons.co.uk

Additional tenant charges apply (fees apply to non-AST tenancies only)
 Tenancy Agreement Fee: £300
 References per Tenant/Guarantor: £60
 Inventory check (approx. £100 – £250 inc. VAT)
chestertons.co.uk/property-to-rent/applicable-fees

EBURY STREET

Approximate Gross Internal Area 1573 sq ft / 146.1 sq m



Although every attempt has been made to ensure accuracy, all measurements are approximate.
The floor plan's for illustrative purposes only and not to scale. Measured in accordance to RICS standards.
DE-PHOTOGRAPHY.NET

