



# Cadogan Place

Knightsbridge, SW1X

£8,016.67 per month  
(£1,850 per week)

An impressive lateral first floor apartment of circa 1,044 sq. ft. with air-conditioning, beautiful interior design and luxuriously finished to a high standard. Situated in a much sought after development with lift access and 24-hour porter.



# Cadogan Place

## Knightsbridge, SW1X

- Air-conditioning
- 24-hour porter
- Lift access
- Private balcony
- Two double bedrooms
- Two bathrooms



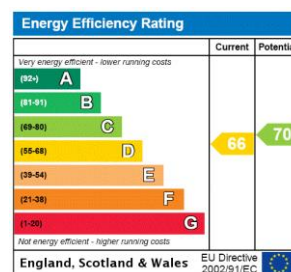


An impressive lateral first floor apartment of circa 1,044 sq. ft, beautiful interior design and luxuriously finished to a high standard. Situated in a much sought after development with lift access and 24-hour porter.

The property benefits from a private terrace and air conditioning. The accommodation includes a large reception/dining room which provides access to the private terrace, separate modern eat-in kitchen, two double bedrooms and two bathrooms.

Conveniently located opposite Lowndes Square and Cadogan Place, moments from Sloane Street, Hyde Park and Harrods.

**Minimum Term:** 12 months  
**Deposit Required:** £11,100.00  
**Local Authority:** Kensington and Chelsea  
**Council Tax Band:** H  
**EPC Rating:** D  
**Furnished**



### *Chestertons Knightsbridge & Belgravia Lettings*

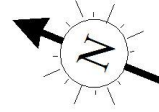
31 Lowndes Street  
 London  
 SW1X 9HX  
[knightsbridglettingsusers@chestertons.co.uk](mailto:knightsbridglettingsusers@chestertons.co.uk)  
 02072353530  
[chestertons.co.uk](http://chestertons.co.uk)

Additional tenant charges apply (fees apply to non-AST tenancies only)  
 Tenancy Agreement Fee: £300  
 References per Tenant/Guarantor: £60  
 Inventory check (approx. £100 – £250 inc. VAT)  
[chestertons.co.uk/property-to-rent/applicable-fees](http://chestertons.co.uk/property-to-rent/applicable-fees)

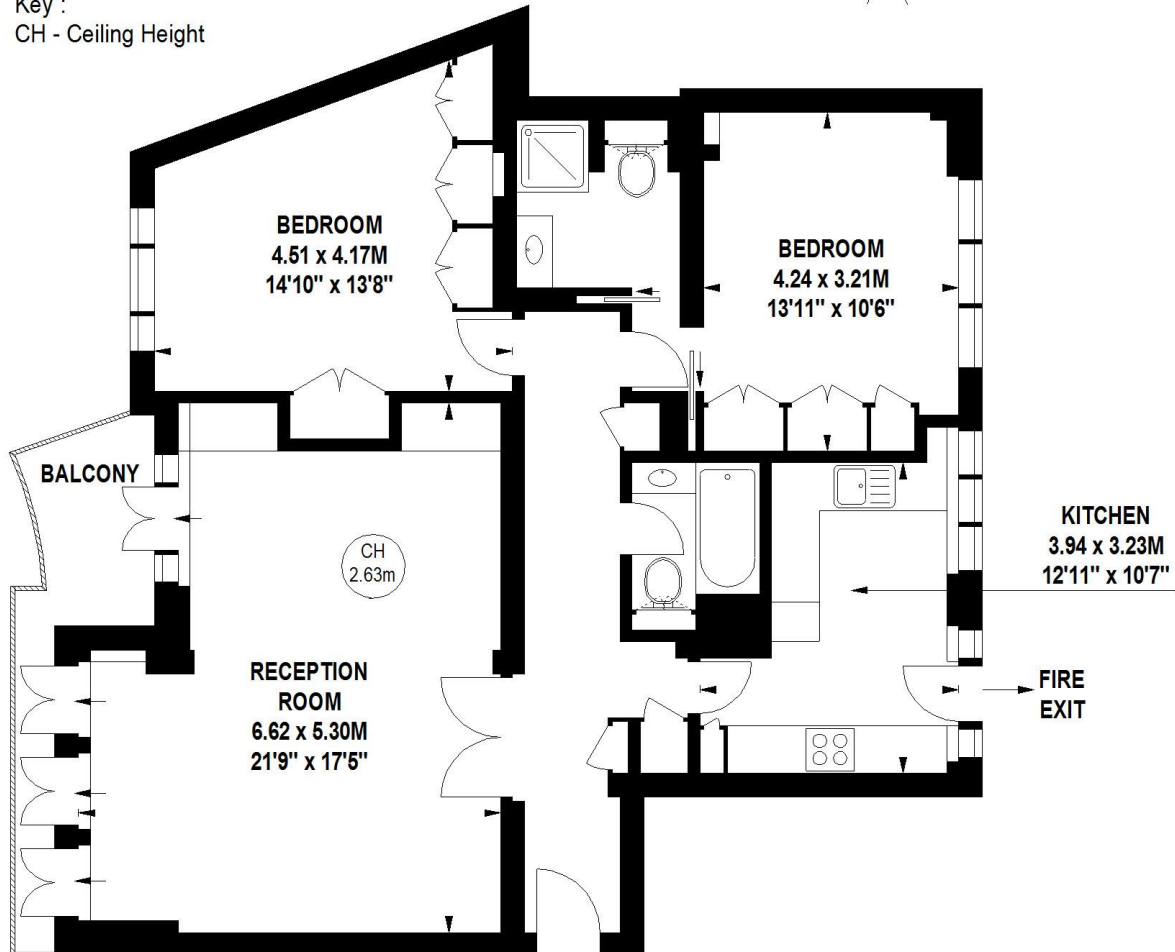
# Lowndes Lodge, SW1X

Approximate gross internal area

96.99 sq m / 1044 sq ft



Key :  
CH - Ceiling Height



## First Floor

The floor plan is not to scale and measurements and areas shown are approximate and therefore should be used for illustrative purposes only.

The plan has been prepared in accordance with the RICS code of Measuring Practice and whilst we have confidence in the information produced, it must not be relied on.

If there is any aspect of particular importance, you should carry out or commission your own inspection of the property.

Copyright of FeaturePRO.

