



# Ennismore Gardens

London, SW7

£4,000 per month  
(£923.08 per week)

SHORT LET | A spacious apartment comprised of two interconnecting reception spaces, semi open plan kitchen, large master bedroom with ample storage and an en suite bathroom. The property is presented beautifully throughout.

CHESTERTONS



# Ennismore Gardens

London, SW7

- Short Let
- One bedroom, double reception, en suite bathroom, kitchen
- Cleverly designed throughout to make the most of the space
- Excellent location very close to Hyde Park and Knightsbridge

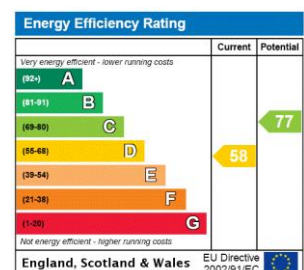




A spacious apartment comprised of two interconnecting reception spaces, semi open plan kitchen, large master bedroom with ample storage and an en suite bathroom. The property is presented beautifully throughout with great attention to detail.

Ennismore Gardens is perfectly located opposite Hyde Park and just a short walk from both South Kensington and the amenities and popular shopping experience offer on Brompton Road.

**Minimum Term:** 1 months  
**Deposit Required:** £4,615.38  
**Local Authority:** City of Westminster  
**Council Tax Band:** F  
**EPC Rating:** D  
**Furnished**



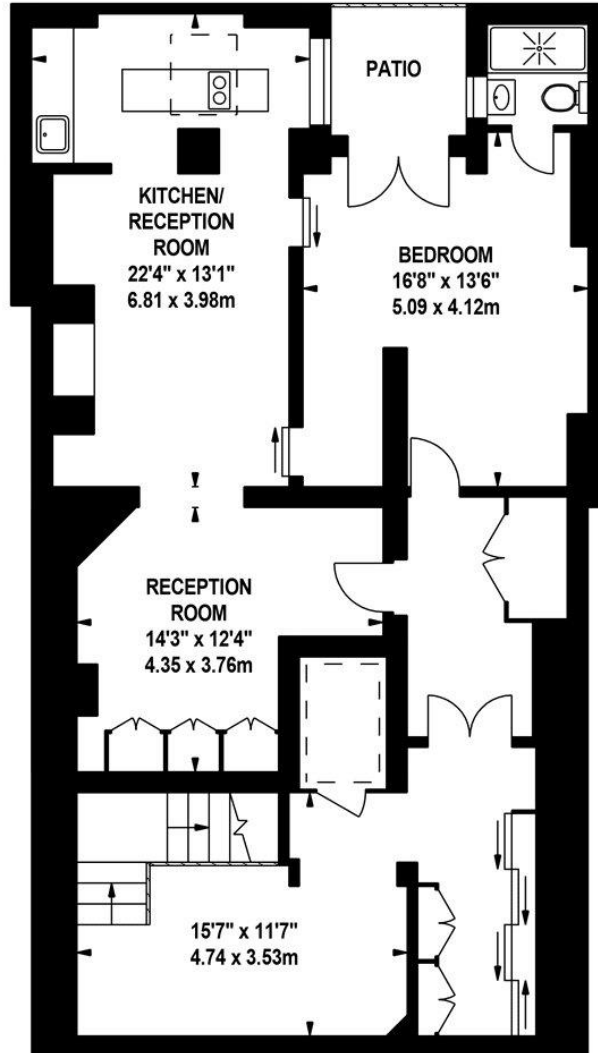
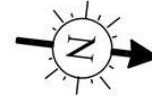
### *Chestertons Knightsbridge & Belgravia Lettings*

31 Lowndes Street  
 London  
 SW1X 9HX  
[knightsbridglettingsusers@chestertons.co.uk](mailto:knightsbridglettingsusers@chestertons.co.uk)  
 02072353530  
[chestertons.co.uk](http://chestertons.co.uk)

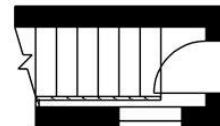
Additional tenant charges apply (fees apply to non-AST tenancies only)  
 Tenancy Agreement Fee: £300  
 References per Tenant/Guarantor: £60  
 Inventory check (approx. £100 – £250 inc. VAT)  
[chestertons.co.uk/property-to-rent/applicable-fees](http://chestertons.co.uk/property-to-rent/applicable-fees)

# Ennismore Gardens, SW7

Approximate gross internal area  
1108 sq ft / 102.93 sq m



**Lower Ground Floor**



**Ground Floor**

The floor plan is not to scale and measurements and areas shown are approximate and therefore should be used for illustrative purposes only. The plan has been prepared in accordance with the RICS code of Measuring Practice and whilst we have confidence in the information produced, it must be not be relied on. If there is any aspect of particular importance, you should carry out or commission your own inspection of the property.  
Copyright of FeaturePRO.

