



Ebury Street

London, SW1W

£9,750 per month
(£2,250 per week)

SHORT LET | An exceptionally bright, two-bedroom, first floor flat benefiting from triple aspect, high ceilings and an exceptionally high quality finish.

CHESTERTONS



Ebury Street

London, SW1W

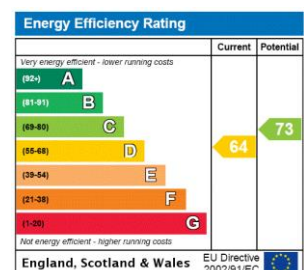
- Short Let
- Furnished
- Recently renovated
- Prime location
- Built in storage
- Fully furnished



An exceptionally bright, two-bedroom, first floor flat benefiting from triple aspect, high ceilings and an exceptionally high quality finish.

Ebury Street is situated in the heart of Belgravia. This area is renowned for its elegant Georgian architecture, upscale boutiques, and fine dining establishments. Ebury Street itself is a charming thoroughfare that runs from Grosvenor Gardens in the northwest to Pimlico Road in the southeast. The street is lined with a mix of residential properties and local businesses, contributing to its vibrant community atmosphere.

Minimum Term: 1 month
Deposit Required: £9,000.00
Local Authority: City of Westminster
Council Tax Band: F
EPC Rating: D
Furnished



Chestertons Knightsbridge & Belgravia Lettings

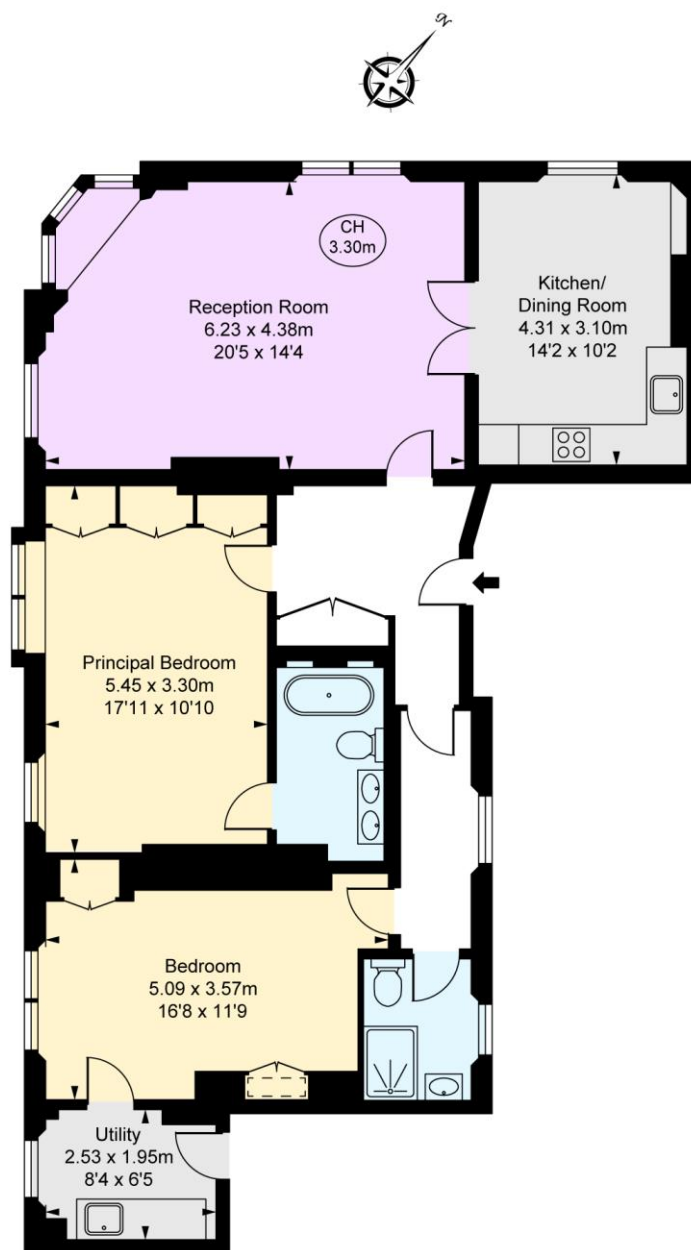
31 Lowndes Street
 London
 SW1X 9HX
knightsbridgelettingsusers@chestertons.co.uk
 02072353530
chestertons.co.uk

Additional tenant charges apply (fees apply to non-AST tenancies only)
 Tenancy Agreement Fee: £300
 References per Tenant/Guarantor: £60
 Inventory check (approx. £100 – £250 inc. VAT)
chestertons.co.uk/property-to-rent/applicable-fees

Ebury Street, SW1W
 Approximate Gross Internal Area
104.92 sq m / 1,129 sq ft

(Including restricted height
 under 1.5m [= = = =])

(CH = Ceiling Heights)



First Floor

This plan is not to scale. It is for guidance and not for valuation purposes.
 All measurements and areas are approximate only, and have been prepared in accordance with the current edition of the RICS Code of Measuring Practice.
 © Fulham Performance

