



# Dorset Mews

London, SW1X

£18,416.67 per month  
(£4,250.00 per week)

An exquisite and beautifully appointed house with underground parking, situated within this exclusive gated development, with onsite porter. Located on Wilton Street, opposite Green Park and moments from Hyde Park, in prime central Belgravia.





# Dorset Mews

## London, SW1X

- Gated mews development
- Onsite porter
- Secure underground parking
- Air conditioning
- Three double bedrooms
- Three bathrooms

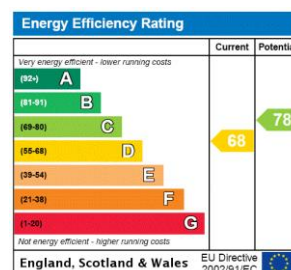




An exquisite and beautifully appointed house with underground parking, situated within this exclusive gated development, with onsite porter. Located on Wilton Street, opposite Green Park and moments from Hyde Park, in prime central Belgravia.

The house has been meticulously refurbished and showcases superb design with excellent craftsmanship. Arranged over three floors and offering circa 2,616 sq ft of living space, the property includes two reception rooms, large kitchen/dining room, three double bedrooms, three bathrooms and a guest WC.

**Minimum Term:** 12 months  
**Deposit Required:** £25,500.00  
**Local Authority:** City of Westminster  
**Council Tax Band:** H  
**EPC Rating:** D  
**Furnished**



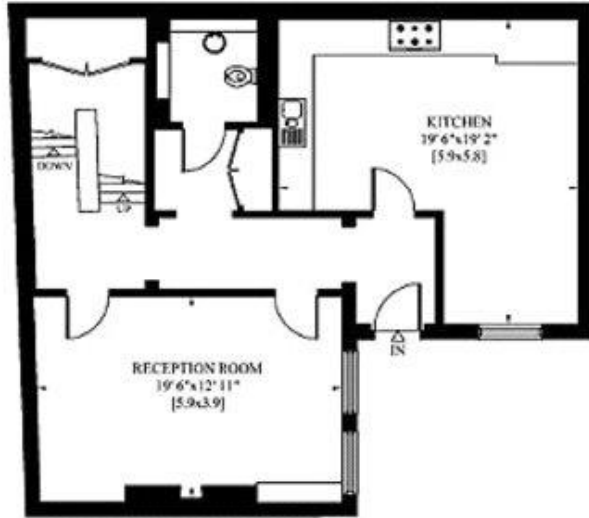
### *Chestertons Knightsbridge & Belgravia Lettings*

31 Lowndes Street  
 London  
 SW1X 9HX  
[knightsbridglettingsusers@chestertons.co.uk](mailto:knightsbridglettingsusers@chestertons.co.uk)  
 02072353530  
[chestertons.co.uk](http://chestertons.co.uk)

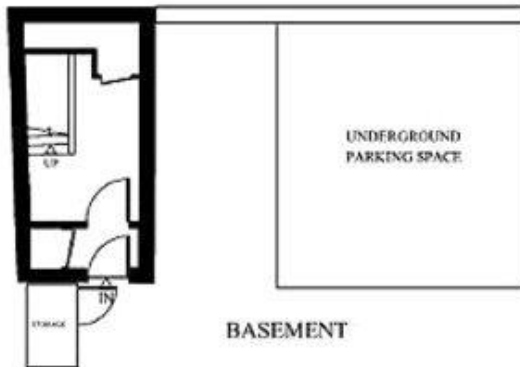
Additional tenant charges apply (fees apply to non-AST tenancies only)  
 Tenancy Agreement Fee: £300  
 References per Tenant/Guarantor: £60  
 Inventory check (approx. £100 – £250 inc. VAT)  
[chestertons.co.uk/property-to-rent/applicable-fees](http://chestertons.co.uk/property-to-rent/applicable-fees)

# DORSET MEWS LONDON SW1

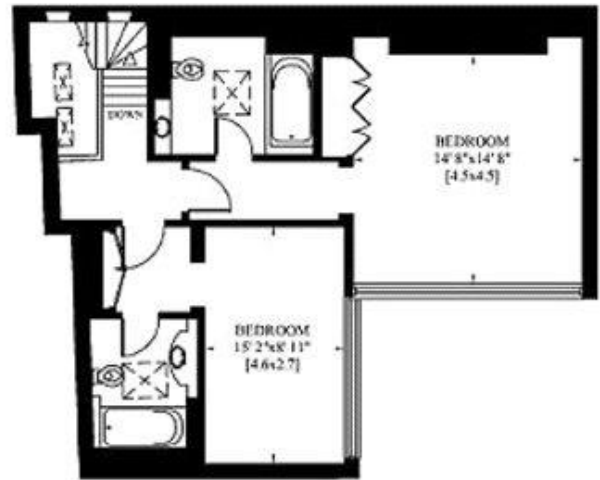
Gross Internal Area: 243 Sq. metres  
2616 Sq. feet



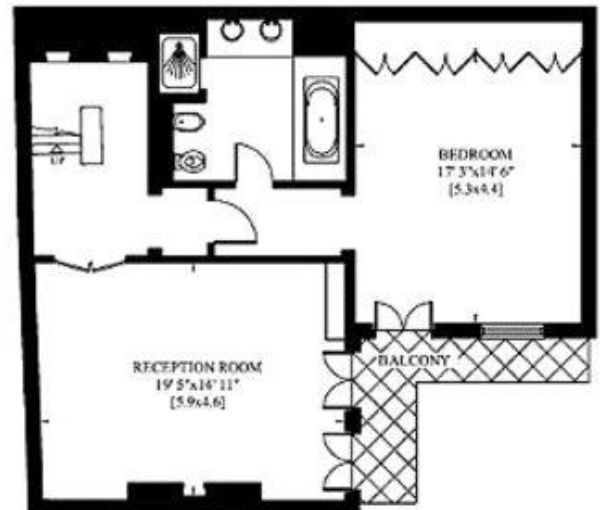
GROUND FLOOR



BASEMENT



SECOND FLOOR



FIRST FLOOR

