



Pont Street Mews

London, SW1X

£25,000 per month
(£5,769.23 per week)

SHORT LET | An exquisite and beautifully appointed double fronted mews house, situated within an exclusive private development, moments from Harrods, Hyde Park and Sloane Street.

CHESTERTONS



Pont Street Mews

London, SW1X

- Double fronted mews house
- Wood flooring
- Meticulously presented throughout
- Exceptionally private and exclusive mews development
- Moments from Harrods, Hyde Park and Sloane Street



An exquisite and beautifully appointed double fronted mews house, situated within an exclusive private development, moments from Harrods, Hyde Park and Sloane Street.

The house has been meticulously refurbished throughout and showcases superb design with excellent craftsmanship and a footprint of circa 1,973 sq ft. The accommodation includes a wonderfully inviting kitchen/dining room, first floor reception and four en suite double bedrooms.

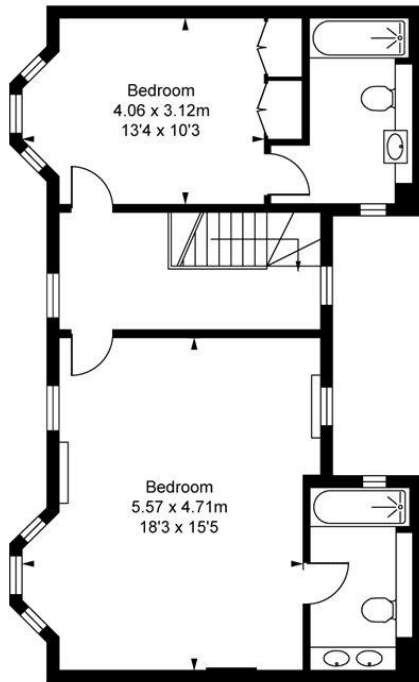
Pont Street Mews is an exceptionally private and exclusive development situated moments from Harrods, Hyde Park and Sloane Street.

Minimum Term:	1 month
Deposit Required:	£23,076.92
Local Authority:	Kensington and Chelsea
Council Tax Band:	H
Furnished	

Chestertons Knightsbridge & Belgravia Lettings

31 Lowndes Street
London
SW1X 9HX
knightsbridglettingsusers@chestertons.co.uk
02072353530
chestertons.co.uk

Additional tenant charges apply (fees apply to non-AST tenancies only)
Tenancy Agreement Fee: £300
References per Tenant/Guarantor: £60
Inventory check (approx. £100 – £250 inc. VAT)
[chestertons.co.uk/property-to-rent/applicable-fees](https://www.chestertons.co.uk/property-to-rent/applicable-fees)



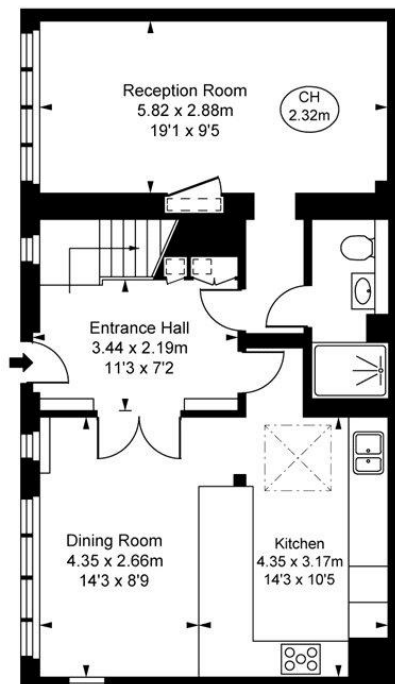
Second Floor
Approximate Gross Internal Area
59.16 sq m / 637 sq ft

Pont Street Mews, SW1X

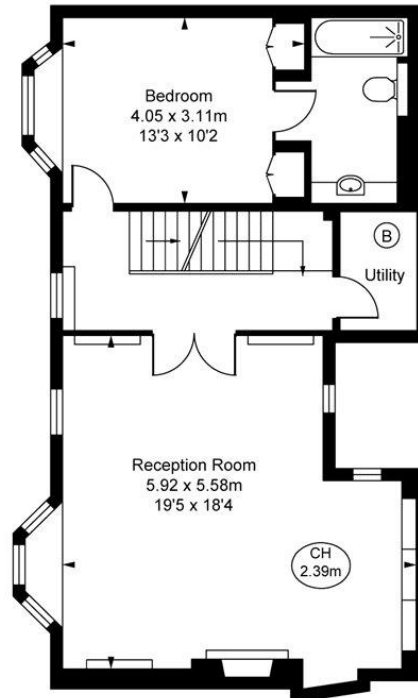
Approximate Gross Internal Area
183.28 sq m / 1,973 sq ft

(Including restricted height
under 1.5m [- - - - -])

(CH = Ceiling Heights)



Ground Floor
Approximate Gross Internal Area
63.70 sq m / 686 sq ft



First Floor
Approximate Gross Internal Area
60.43 sq m / 650 sq ft

This plan is not to scale. It is for guidance and not for valuation purposes.
All measurements and areas are approximate only, and have been prepared in accordance with the current edition of the RICS Code of Measuring Practice.
© Fulham Performance

