

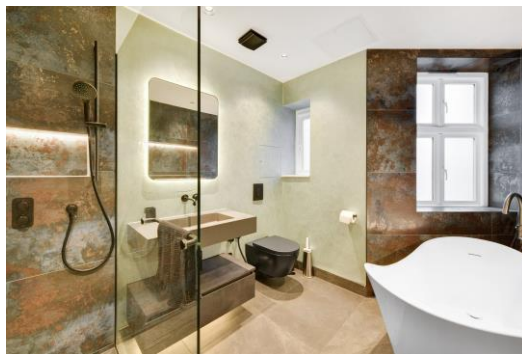


Hans Crescent

London, SW1X

£8,450 per month
(£1,950 per week)

An impressive top floor apartment of circa 1,192 sq ft, with wood flooring, and high ceilings. The property is located in a prestigious building on Hans Crescent.



Hans Crescent

London, SW1X

- Newly refurbished
- Air conditioning through out
- Underfloor heating
- Ample storage
- Fully furnished
- Prime location

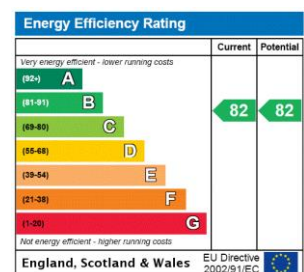


Contemporary apartment situated in a stunning red brick building located opposite Harrods. The accommodation benefits from wood flooring throughout, high ceilings and underfloor heating.

The accommodation is circa 1192 sq ft and benefits from wood flooring throughout, an impressive reception with high ceilings, open plan modern kitchen, three double bedrooms and two bathrooms.

Hans Crescent is a beautiful red brick development of high end apartments located opposite Harrods and just a couple of minutes' walk from Hyde Park. Also in close walking distance are both Knightsbridge and Hyde Park tube stations.

Minimum Term: 12 months
Deposit Required: £11,700.00
Local Authority: Royal Borough of Kensington & Chelsea
Council Tax Band: G
EPC Rating: B
Furnished



Chestertons Knightsbridge & Belgravia Lettings

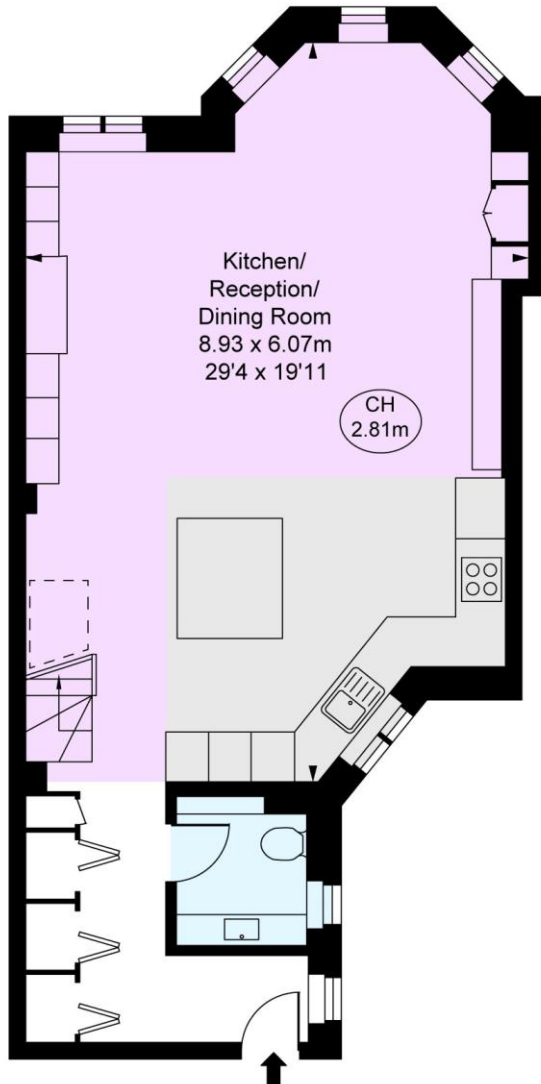
31 Lowndes Street
 London
 SW1X 9HX
knightsbridglettingsusers@chestertons.co.uk
 02072353530
chestertons.co.uk

Additional tenant charges apply (fees apply to non-AST tenancies only)
 Tenancy Agreement Fee: £300
 References per Tenant/Guarantor: £60
 Inventory check (approx. £100 – £250 inc. VAT)
chestertons.co.uk/property-to-rent/applicable-fees

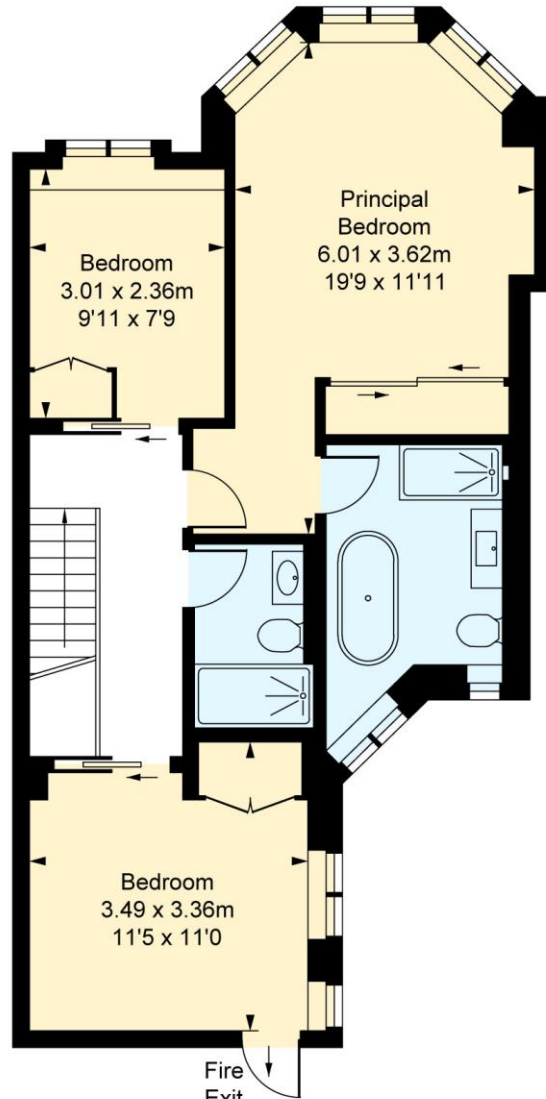
Hans Crescent, SW1X
 Approximate Gross Internal Area
110.78 sq m / 1,192 sq ft

(Including restricted height
 under 1.5m [])

(CH = Ceiling Heights)



Second Floor
 Approximate Gross Internal Area
56.07 sq m / 604 sq ft



Third Floor
 Approximate Gross Internal Area
54.71 sq m / 589 sq ft

This plan is not to scale. It is for guidance and not for valuation purposes.
 All measurements and areas are approximate only, and have been prepared in accordance with the current edition of the RICS Code of Measuring Practice.
 © Fulham Performance