

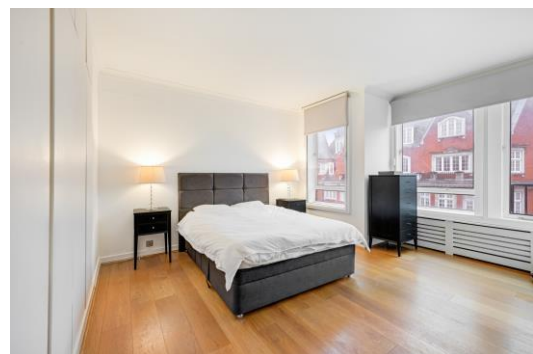


Sloane Square

London, SW1W

£6,500 per month
(£1,500 per week)

SHORT LET | An extremely bright, south facing one bedroom apartment on the 4th floor of this purpose-built development with lift access. The accommodation is circa 732 sq. ft. and benefits from wood flooring throughout. Located opposite Sloane Square.



Sloane Square

London, SW1W

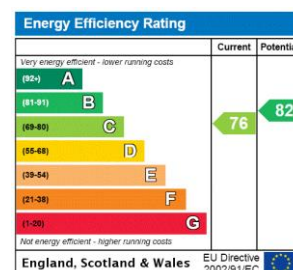
- Lift
- Natural light
- Sloane Square view
- Built in storage
- Furnished



An extremely bright, south facing one bedroom apartment on the 4th floor of this purpose built development with lift access. The accommodation is circa 732 sq., ft and benefits from wood flooring throughout. Located opposite Sloane Square.

Located opposite Sloane Square moments from the Underground station and the amenities of the Kings Road.

Minimum Term: 1 months
Deposit Required: £7,500.00
Local Authority: Royal Borough of Kensington & Chelsea
Council Tax Band: F
EPC Rating: C
Furnished



Chestertons Knightsbridge & Belgravia Lettings

31 Lowndes Street
 London
 SW1X 9HX
knightsbridgelettingsusers@chestertons.co.uk
 02072353530
chestertons.co.uk

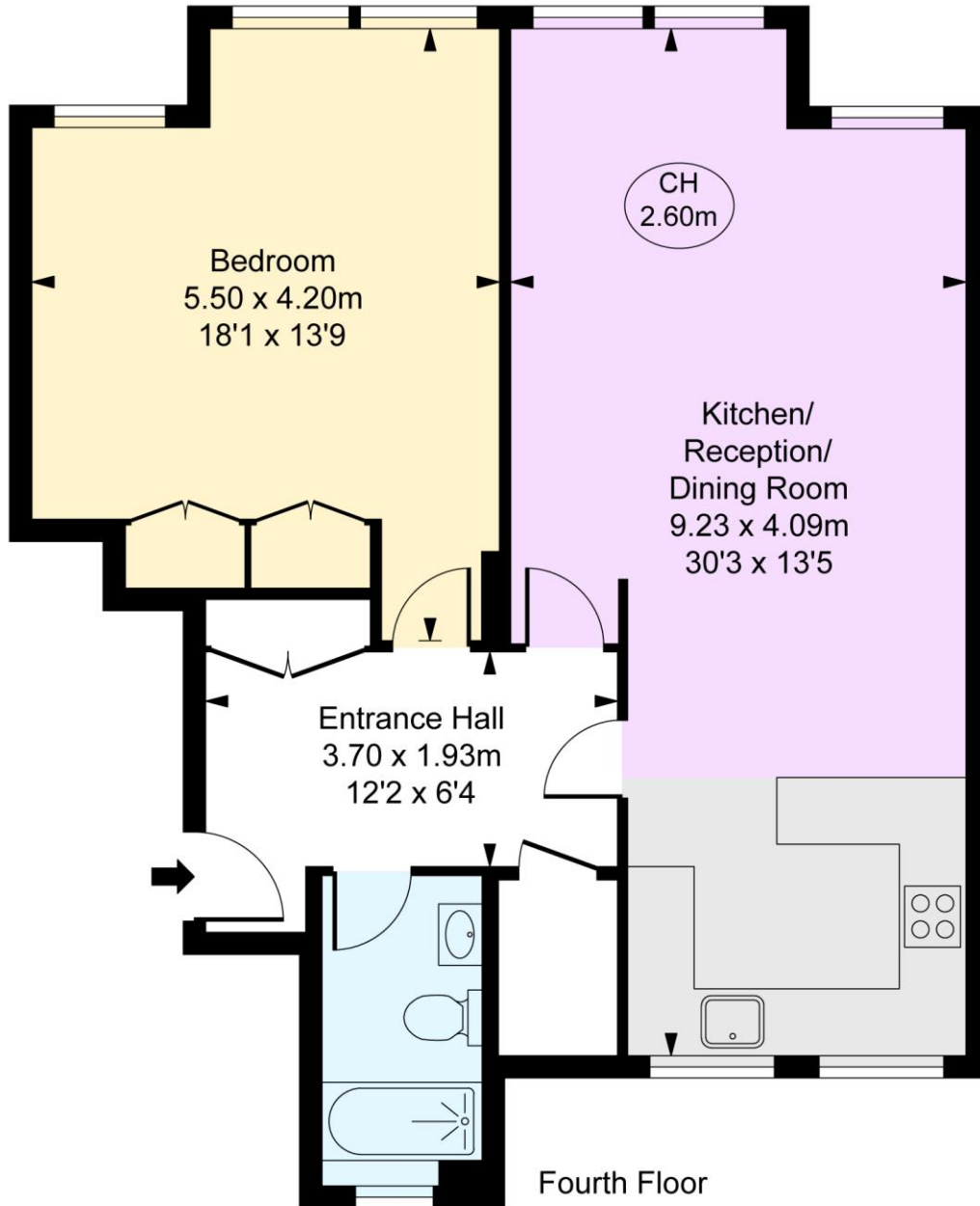
Additional tenant charges apply (fees apply to non-AST tenancies only)
 Tenancy Agreement Fee: £300
 References per Tenant/Guarantor: £60
 Inventory check (approx. £100 – £250 inc. VAT)
chestertons.co.uk/property-to-rent/applicable-fees



Sloane Square, SW1W

Approximate Gross Internal Area
67.69 sq m / 729 sq ft

(CH = Ceiling Heights)



This plan is not to scale. It is for guidance and not for valuation purposes.
All measurements and areas are approximate only, and have been prepared in accordance with the current edition of the RICS Code of Measuring Practice.
© Fulham Performance

