



Trevor Place

London, SW7

£18,000 per month
(£4,153.85 per week)

A stunning townhouse of circa 2,644 sq. ft., arranged over five floors, located near Harrods in central Knightsbridge. Features include a double reception, private patio and wood flooring.



Trevor Place

London, SW7

- Beautifully presented family home
- Wood flooring in the reception
- Private patio
- Perfectly situated between Harrods and Hyde Park
- Professionally managed

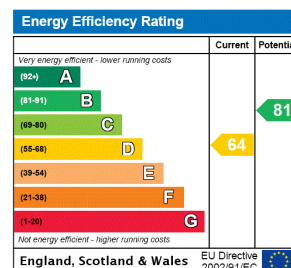


A stunning townhouse of circa 2,644 sq. ft., arranged over five floors, located near Harrods in central Knightsbridge. Features include a double reception, private patio and wood flooring.

The house has been designed and finished to an exceptionally high standard. The accommodation is arranged over five floors and includes two receptions, modern kitchen/breakfast room with a dining room, five bedrooms, three bathrooms and a private patio.

Trevor Place is one of Knightsbridge's premier addresses and is conveniently located between Brompton Road and Hyde Park and within a short walking distance of Harrods and the many world-renowned shops of Knightsbridge.

Minimum Term: 12 months
Deposit Required: £24,923.08
Local Authority: City of Westminster
Council Tax Band: H
EPC Rating: D
Furnished



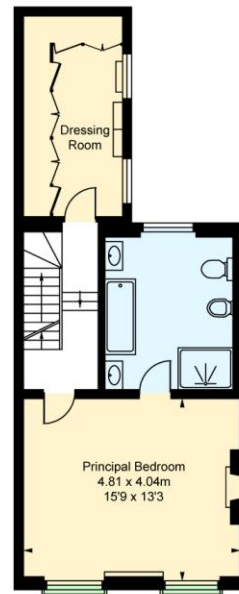
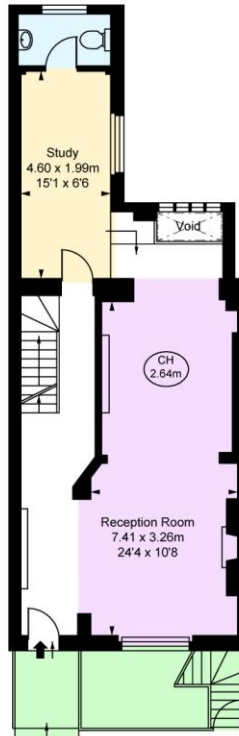
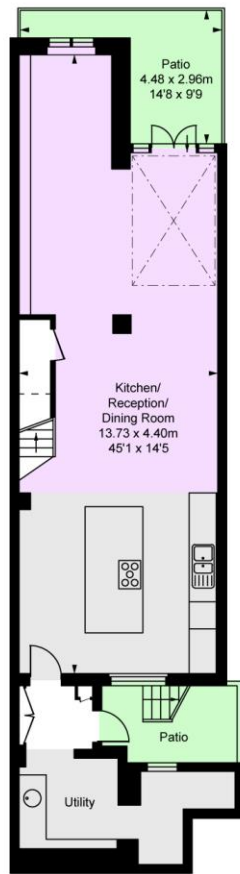
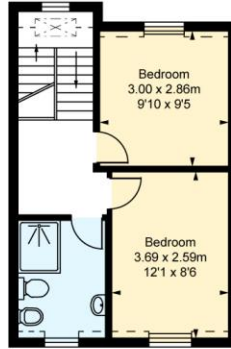
Chestertons Knightsbridge & Belgravia Lettings

31 Lowndes Street
 London
 SW1X 9HX
knightsbridglettingsusers@chestertons.co.uk
 02072353530
chestertons.co.uk

Additional tenant charges apply (fees apply to non-AST tenancies only)
 Tenancy Agreement Fee: £300
 References per Tenant/Guarantor: £60
 Inventory check (approx. £100 – £250 inc. VAT)
chestertons.co.uk/property-to-rent/applicable-fees

Trevor Place, SW7
Approximate Gross Internal Area
245.04 sq m / 2,638 sq ft

(Excluding Void)
(Including restricted height
under 1.5m □ = □ □)
(CH = Ceiling Heights)



This plan is not to scale. It is for guidance and not for valuation purposes.
All measurements and areas are approximate only, and have been prepared in accordance with the current edition of the RICS Code of Measuring Practice.
© Fulham Performance

