



# Trevor Place

Knightsbridge, SW7

£18,450 per month  
(£4,257.69 per week)

A stunning townhouse of circa 2,644 sq. ft., arranged over five floors, located near Harrods in central Knightsbridge. Features include a double reception, private patio and wood flooring.



# Trevor Place

## Knightsbridge, SW7

- Beautifully presented family home
- Wood flooring in the reception
- Private patio
- Perfectly situated between Harrods and Hyde Park
- Professionally managed



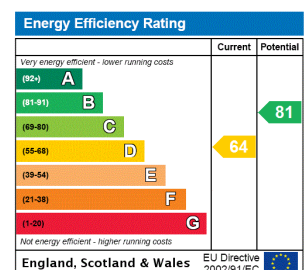


A stunning townhouse of circa 2,644 sq. ft., arranged over five floors, located near Harrods in central Knightsbridge. Features include a double reception, private patio and wood flooring.

The house has been designed and finished to an exceptionally high standard. The accommodation is arranged over five floors and includes two receptions, modern kitchen/breakfast room with a dining room, five bedrooms, three bathrooms and a private patio.

Trevor Place is one of Knightsbridge's premier addresses and is conveniently located between Brompton Road and Hyde Park and within a short walking distance of Harrods and the many world-renowned shops of Knightsbridge.

**Minimum Term:** 12 months  
**Deposit Required:** £25,546.15  
**Local Authority:** City of Westminster  
**Council Tax Band:** H  
**EPC Rating:** D  
**Furnished**



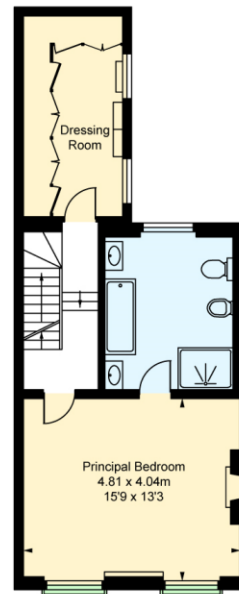
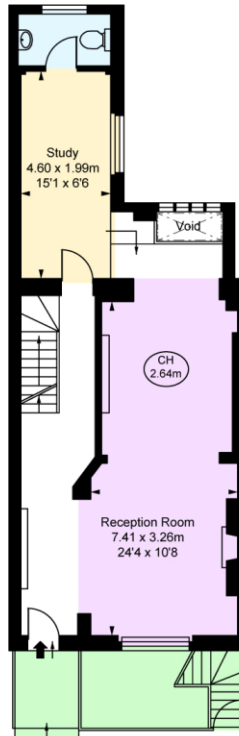
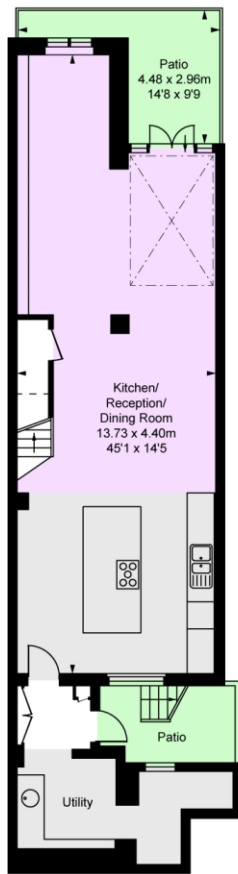
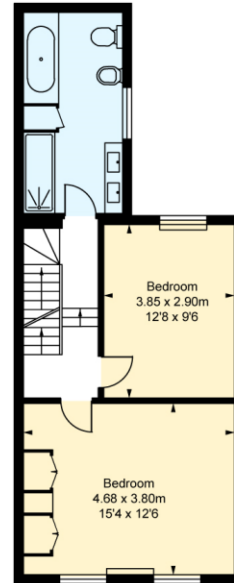
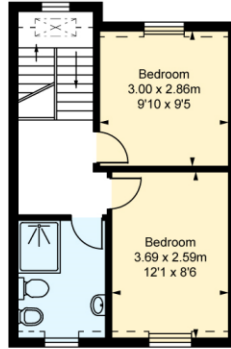
### Chestertons Knightsbridge & Belgravia Lettings

31 Lowndes Street  
 London  
 SW1X 9HX  
[knightsbridglettingsusers@chestertons.co.uk](mailto:knightsbridglettingsusers@chestertons.co.uk)  
 02072353530  
[chestertons.co.uk](http://chestertons.co.uk)

Additional tenant charges apply (fees apply to non-AST tenancies only)  
 Tenancy Agreement Fee: £300  
 References per Tenant/Guarantor: £60  
 Inventory check (approx. £100 – £250 inc. VAT)  
[chestertons.co.uk/property-to-rent/applicable-fees](http://chestertons.co.uk/property-to-rent/applicable-fees)

**Trevor Place, SW7**  
Approximate Gross Internal Area  
245.04 sq m / 2,638 sq ft

(Excluding Void)  
(Including restricted height  
under 1.5m □ = □ □)  
(CH = Ceiling Heights)



This plan is not to scale. It is for guidance and not for valuation purposes.  
All measurements and areas are approximate only, and have been prepared in accordance with the current edition of the RICS Code of Measuring Practice.  
© Fulham Performance

