



# Lowndes Square

London, SW1X

£6,716.67 per month  
(£1,550 per week)

Contemporary 3rd floor apartment of circa 1,111 sq ft with lift access and porter, located on one of London's finest garden squares. Key features include wood flooring, two bathrooms, and plenty of natural light. Located moments from Hyde Park.



# Lowndes Square

London, SW1X

- Wood flooring in the main reception
- Two double bedrooms
- Two bathrooms
- Lift access
- Porter



Contemporary 3rd floor apartment of circa 1,111 sq ft with lift access and porter, located on one of London's finest garden squares. Key features include wood flooring, two bathrooms, and plenty of natural light.

The accommodation comprises of a large open plan kitchen/reception and dining space, two double bedrooms with built-in storage, and two modern bathrooms.

Lowndes Square is located opposite Hyde Park and Sloane Street, providing easy access to the world famous shops and restaurants of the local area.

---

**Minimum Term:** 12 months  
**Deposit Required:** £9,300.00  
**Local Authority:**  
**Council Tax Band:** H  
**EPC Rating:** C  
**Unfurnished**

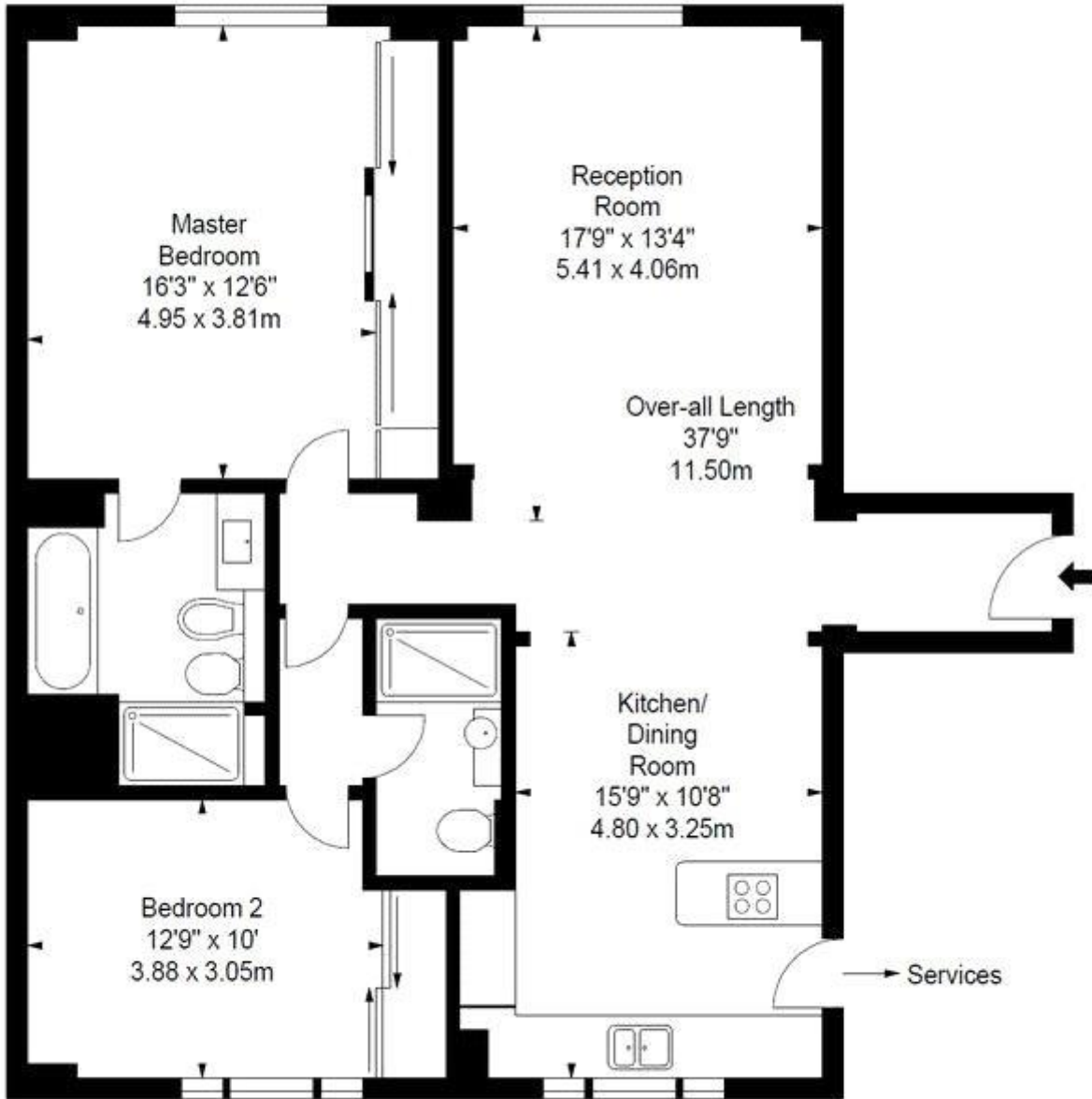
---

### *Chestertons Knightsbridge & Belgravia Lettings*

31 Lowndes Street  
London  
SW1X 9HX  
lettings.knightsbridge@chestertons.com  
02072353530  
chestertons.com

Additional tenant charges apply (fees apply to non-AST tenancies only)  
Tenancy Agreement Fee: £300  
References per Tenant/Guarantor: £60  
Inventory check (approx. £100 – £250 inc. VAT)  
[chestertons.com/property-to-rent/applicable-fees](https://www.chestertons.com/property-to-rent/applicable-fees)

Approx. Gross Internal Area \*  
1,111 Ft<sup>2</sup> - 103.21 M<sup>2</sup>



Third Floor

