



Pont Street  
London, SW1X

CHESTERTONS





Stunning 4th floor apartment of circa 1,352 sq. ft. with lift access and caretaker. The apartment has been recently renovated to a high standard and offers beautiful wood flooring, a spacious reception and modern fixtures and fittings.

- Recently redecorated throughout
- Wood flooring in reception
- Caretaker
- Lift access
- Modern fixtures and fittings
- Ample storage

**£8,450 pcm**

Additional tenant charges apply (fees apply to non-AST tenancies only)

Tenancy Agreement Fee: £300

References per Tenant/Guarantor: £60

Inventory check (approx. £100 – £250 inc. VAT)

[chestertons.co.uk/property-to-rent/applicable-fees](http://chestertons.co.uk/property-to-rent/applicable-fees)

Energy Efficiency Rating		Current	Potential
95-100	A		
81-94	B		
69-80	C		
55-68	D	63	63
39-54	E		
21-38	F		
1-20	G		

Not energy efficient - higher running costs

England, Scotland & Wales EU Directive 2002/91/EC

**Minimum Term:** 12 months  
**Deposit Required:** £11,700.00  
**Local Authority:** Royal Borough of Kensington & Chelsea  
**Council Tax Band:** H  
**EPC Rating:** D  
**Furnished**

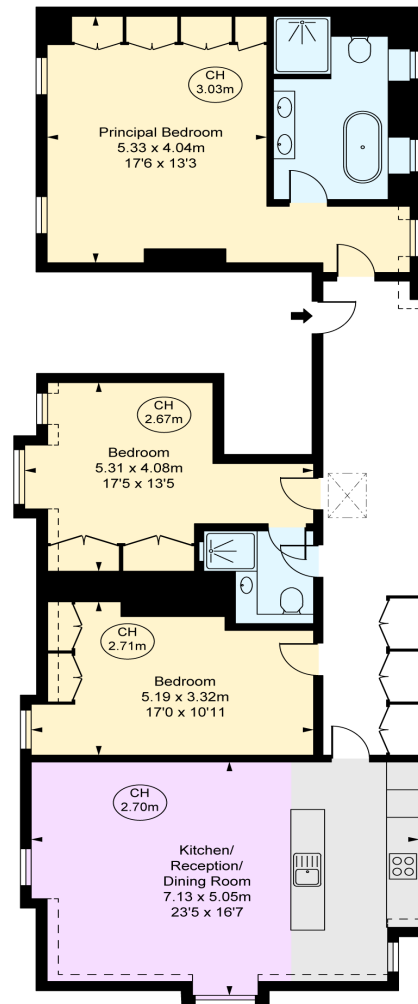
*Chestertons Knightsbridge & Belgravia Lettings*

31 Lowndes Street  
 London  
 SW1X 9HX

[knightsbridge@chestertons.co.uk](mailto:knightsbridge@chestertons.co.uk)  
 02072353530  
[chestertons.co.uk](http://chestertons.co.uk)

Pont Street, SW1X  
Approximate Gross Internal Area  
124.92 sq m / 1,345 sq ft

(Including restricted height  
under 1.5m □ □ □ □ □)  
(CH = Ceiling Heights)



Fourth Floor

This plan is not to scale. It is for guidance and not for valuation purposes.  
All measurements and areas are approximate only, and have been prepared in accordance with the current edition of the RICS Code of Measuring Practice.  
© Fulham Performance

Chesteron Global Ltd trading as Chestertons for themselves and for the vendor of this property whose agents they are, give notice that (i) these particulars do not constitute any part of an offer or contract, (ii) all statements contained within these particulars are made without responsibility on the part of Chestertons or the vendor, (iii) whilst made in good faith, none of the statements contained within these particulars are to be relied upon as a statement or representation of fact, (iv) any intending purchasers must satisfy themselves by inspection or otherwise as to the correctness of each of the statements contained within these particulars, (v) the vendor does not make or give either Chestertons or any person in their employment any authority to make or give representation or warranty whatsoever in relation to this property. Wide angle lenses may be used. ©Copyright Chestertons | Chesteron Global Ltd | Registered Office 40 Connaught Street, Hyde Park, London W2 2AB Registered Company Number 05334580.



This paper is  
100% recyclable