



Pont Street

London, SW1X

£9,750 per month
(£2,250 per week)

Stunning 4th floor apartment of circa 1,352 sq. ft. with lift access and caretaker. The apartment has been recently renovated to a high standard and offers beautiful wood flooring, a spacious reception and modern fixtures and fittings.



Pont Street

London, SW1X

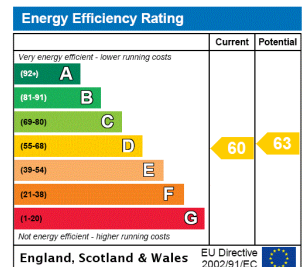
- Recently redecorated throughout
- Wood flooring in reception
- Caretaker
- Lift access
- Modern fixtures and fittings
- Ample storage



Stunning 4th floor apartment of circa 1,352 sq. ft. with lift access and caretaker. The apartment has been recently renovated to a high standard and offers beautiful wood flooring, a spacious reception and modern fixtures and fittings.

The property is perfectly located close to the excellent shopping facilities of Brompton Road, Harrods and Sloane Street. Also in walking distance are the wonderful restaurants, bars and galleries of Walton Street.

Minimum Term: 12 months
Deposit Required: £13,500.00
Local Authority: Royal Borough of Kensington & Chelsea
Council Tax Band: H
EPC Rating: D
Furnished



Chestertons Knightsbridge & Belgravia Lettings

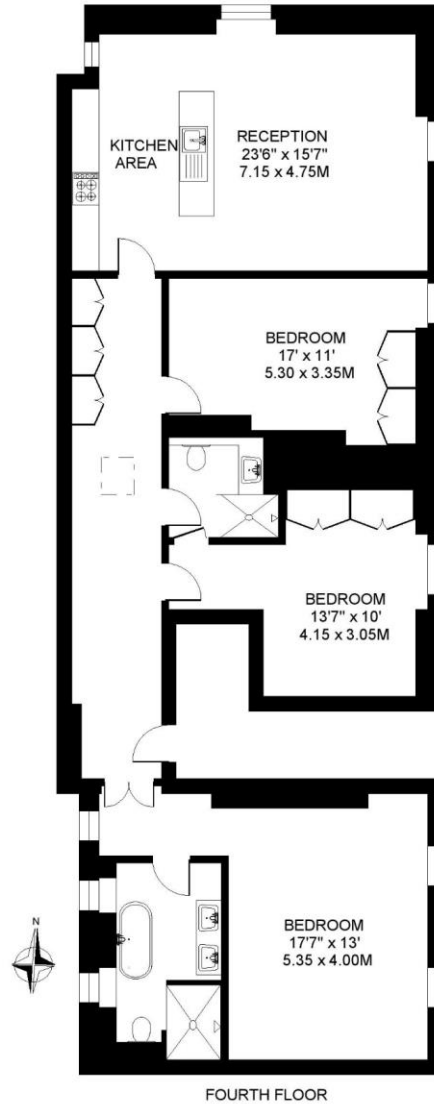
31 Lowndes Street
 London
 SW1X 9HX
 knightsbridge@chestertons.co.uk
 02072353530
 chestertons.co.uk

Additional tenant charges apply (fees apply to non-AST tenancies only)
 Tenancy Agreement Fee: £300
 References per Tenant/Guarantor: £60
 Inventory check (approx. £100 – £250 inc. VAT)
 chestertons.co.uk/property-to-rent/applicable-fees

PONT STREET, BELGRAVIA, LONDON SW1

APPROXIMATE INTERNAL (LIVING) FLOOR AREA

1352 SQ.FT. / 125.6 SQ.M.



COPYRIGHT: Floorplan produced for "Henry & James Estate Agents Ltd." by floorplanners.co.uk

This plan is not to a given scale, and is for guidance only, and must not be relied upon as a statement of fact.

All measurements are maximum, and include window bays, and wardrobes where applicable.

This plan has been prepared in accordance with the "RICS" Code of Measuring Practice.

Where a room has a sloping ceiling, the dotted line indicates height at 1.5m. and measurements are shown at floor level.

