



# Ennismore Gardens

London, SW7

£8,700 per month  
(£2,007.69 per week)

Stunning lateral garden flat located moments from Hyde Park, on a popular garden square. The accommodation is circa 1,476 sq. ft. and comprises of a large reception/dining room, private garden, three double bedrooms and three bathrooms.



# Ennismore Gardens

London, SW7

- Fully furnished
- Private garden
- Three bathrooms
- Professionally managed





Stunning lateral garden flat located moments from Hyde Park, on a popular garden square. The accommodation is circa 1,476 sq. ft. and comprises of a large reception/dining room, private garden, three double bedrooms and three bathrooms.

Ennismore Gardens is perfectly located opposite Hyde Park and just a short walk from both South Kensington and the amenities and popular shopping experience offer on Brompton Road and Harrods.

**Minimum Term:** 12 months  
**Deposit Required:** £12,046.15  
**Local Authority:** Westminster  
**Council Tax Band:** H  
**EPC Rating:** D  
**Furnished**

Energy Efficiency Rating		
	Current	Potential
Very energy efficient - lower running costs		
<b>A</b> (92-100)		
<b>B</b> (81-91)		
<b>C</b> (69-80)		
<b>D</b> (55-68)	62	75
<b>E</b> (39-54)		
<b>F</b> (21-38)		
<b>G</b> (1-20)		
Not energy efficient - higher running costs		
England, Scotland & Wales		EU Directive 2002/91/EC

### *Chestertons Knightsbridge & Belgravia Lettings*

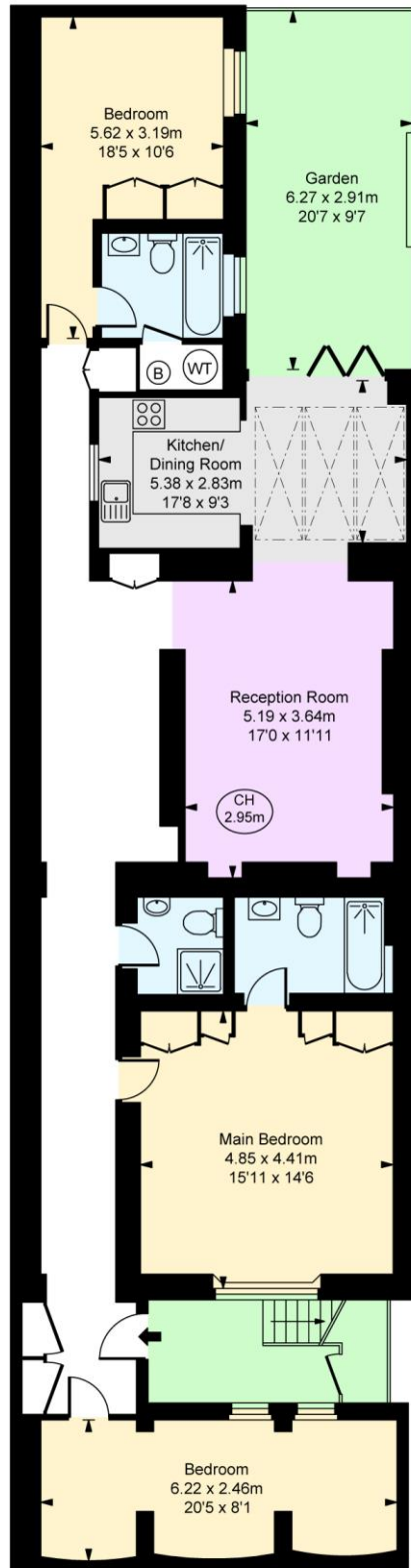
31 Lowndes Street  
 London  
 SW1X 9HX  
[knightsbridglettingsusers@chestertons.co.uk](mailto:knightsbridglettingsusers@chestertons.co.uk)  
 02072353530  
[chestertons.co.uk](http://chestertons.co.uk)

Additional tenant charges apply (fees apply to non-AST tenancies only)  
 Tenancy Agreement Fee: £300  
 References per Tenant/Guarantor: £60  
 Inventory check (approx. £100 – £250 inc. VAT)  
[chestertons.co.uk/property-to-rent/applicable-fees](http://chestertons.co.uk/property-to-rent/applicable-fees)

# Ennismore Gardens, SW7

Approximate Gross Internal Area  
137.14 sq m / 1,476 sq ft

( CH = Ceiling Heights )



Lower Ground Floor

This plan is not to scale. It is for guidance and not for valuation purposes.  
All measurements and areas are approximate only, and have been prepared in accordance with the current edition of the RICS Code of Measuring Practice.  
© Fulham Performance

