



Rutland Gate
London, SW7

CHESTERTONS





Rutland Gate is a highly prestigious residential address in Knightsbridge's area, a London neighbourhood known for its affluence and proximity to Hyde Park.

- Five double bedrooms plus a study/guest bedroom
- Stunning private terrace
- Wood flooring
- Original period features that include high ceilings
- Located on a garden square opposite Hyde Park

£69,333.33 pcm

Additional tenant charges apply (fees apply to non-AST tenancies only)

Tenancy Agreement Fee: £300

References per Tenant/Guarantor: £60

Inventory check (approx. £100 – £250 inc. VAT)

chestertons.co.uk/property-to-rent/applyable-fees

Energy Efficiency Rating		Current	Potential
95-100	A		
81-94	B		
69-80	C		78
55-68	D	61	
39-54	E		
21-38	F		
1-20	G		

Not energy efficient - higher running costs

England, Scotland & Wales EU Directive 2002/91/EC

Minimum Term: months
Deposit Required: £96,000.00
Local Authority:
Council Tax Band: H
EPC Rating: D
Furnished

Chestertons Knightsbridge & Belgravia Lettings

31 Lowndes Street

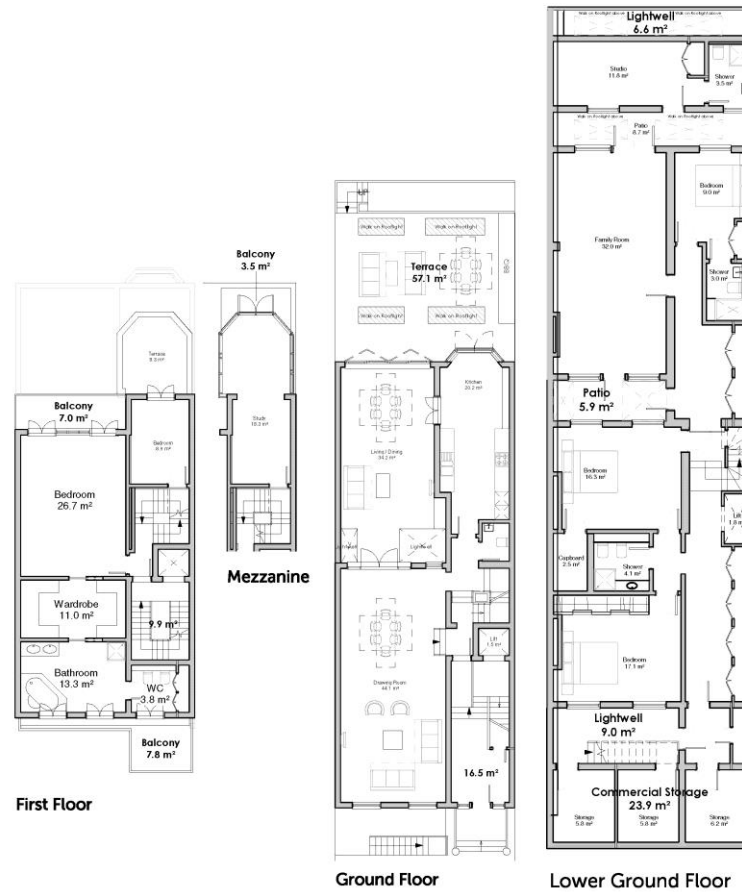
London

SW1X 9HX

knightsbridge@chestertons.co.uk

02072353530

chestertons.co.uk



Chesterton Global Ltd trading as Chestertons for themselves and for the vendor of this property whose agents they are, give notice that (i) these particulars do not constitute any part of an offer or contract, (ii) all statements contained within these particulars are made without responsibility on the part of Chestertons or the vendor, (iii) whilst made in good faith, none of the statements contained within these particulars are to be relied upon as a statement or representation of fact, (iv) any intending purchasers must satisfy themselves by inspection or otherwise as to the correctness of each of the statements contained within these particulars, (v) the vendor does not make or give either Chestertons or any person in their employment any authority to make or give representation or warranty whatsoever in relation to this property. Wide angle lenses may be used. ©Copyright Chestertons | Chesterton Global Ltd | Registered Office 40 Connaught Street, Hyde Park, London W2 2AB Registered Company Number 05334580.



This paper is 100% recyclable