



Ennismore Gardens Mews

London, SW7

£15,500 per month
(£3,576.92 per week)

Impressive double fronted mews house of circa 2,259 sq ft, located on a quiet street, within easy access of Knightsbridge, South Kensington and Hyde Park. Features include a sauna, courtyard garden, two balconies, air-conditioning and lift access to all floors.

The accommodation is arranged over three floors and includes a spacious reception with wood flooring and a bi-folding wall, which creates a third bedroom/study. Additional accommodation includes a fully fitted modern kitchen, second reception/dining room, two double bedrooms, five bathrooms, gym and sauna.



Ennismore Gardens Mews

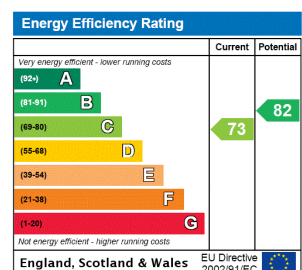
London, SW7

- Lift access to all floors
- Air-conditioning
- Wood flooring
- Gym and sauna
- Courtyard garden and two balconies



‘Impressive double fronted mews house of circa 2,259 sq ft, located on a quiet street, within easy access of Knightsbridge, South Kensington and Hyde Park.’

Minimum Term: 12 months
Deposit Required: £21,461.54
Local Authority: Westminster
Council Tax Band: H
EPC Rating: C
Furnished



Chestertons Knightsbridge & Belgravia Lettings

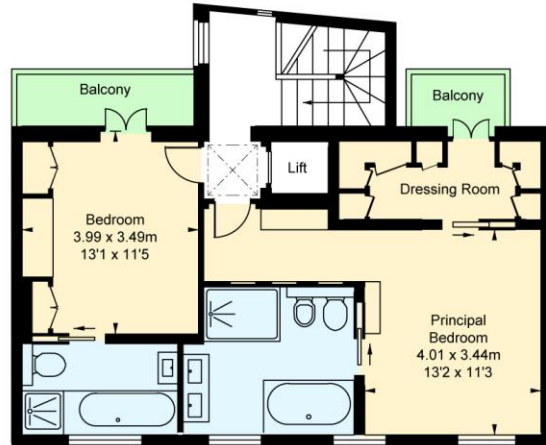
31 Lowndes Street
 London
 SW1X 9HX
 knightsbridge@chestertons.co.uk
 02072353530
 chestertons.co.uk

Additional tenant charges apply (fees apply to non-AST tenancies only)
 Tenancy Agreement Fee: £300
 References per Tenant/Guarantor: £60
 Inventory check (approx. £100 – £250 inc. VAT)
chestertons.co.uk/property-to-rent/applicable-fees

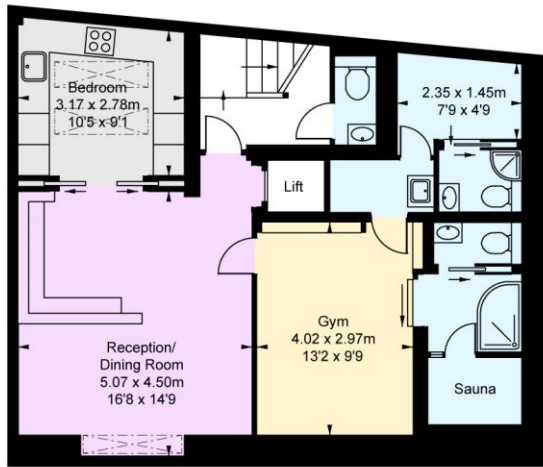
Ennismore Gardens Mews, SW7

Approximate Gross Internal Area
209.87 sq m / 2,259 sq ft

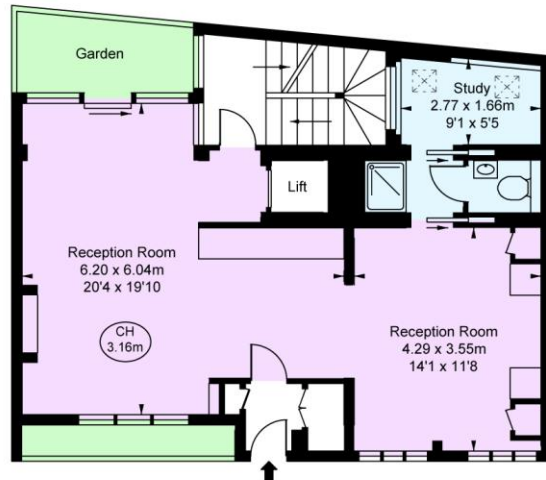
(CH = Ceiling Heights)



First Floor
Approximate Gross Internal Area
64.54 sq m / 695 sq ft



Lower Ground Floor
Approximate Gross Internal Area
74.63 sq m / 803 sq ft



Ground Floor
Approximate Gross Internal Area
70.70 sq m / 761 sq ft

This plan is not to scale. It is for guidance and not for valuation purposes.
All measurements and areas are approximate only, and have been prepared in accordance with the current edition of the RICS Code of Measuring Practice.
© Fulham Performance

