



Montpelier Square

Knightsbridge, SW7

£28,166.67 per month
(£6,500.00 per week)

An impeccably designed townhouse, situated on the northern terrace of this prestigious garden square in the heart of Knightsbridge. Features include a lift, private terrace, two receptions and six bedrooms.



Montpelier Square

Knightsbridge, SW7

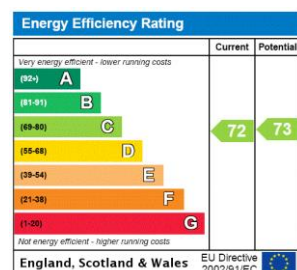
- Impeccable design
- Lift
- Conservatory
- Terrace
- Six bedrooms
- Five bathrooms
- Premier Knightsbridge garden square



An impeccably designed townhouse, situated on the northern terrace of this prestigious garden square in the heart of Knightsbridge.

The house has been designed and finished to an exceptionally high standard and features a wonderful southerly aspect over the garden square, to which residents have access. The accommodation is arranged over six floors with lift and includes two receptions, conservatory, modern kitchen/breakfast room, dining room, six bedrooms, five bathrooms and a private terrace.

Minimum Term: 12 months
Deposit Required: £39,000.00
Local Authority:
Council Tax Band:
EPC Rating: C
Furnished, Unfurnished



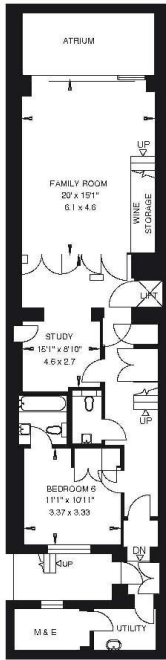
Chestertons Knightsbridge & Belgravia Lettings

31 Lowndes Street
 London
 SW1X 9HX
 knightsbridge@chestertons.co.uk
 02072353530
 chestertons.co.uk

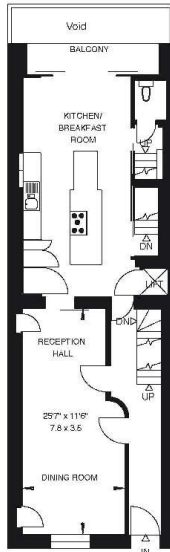
Additional tenant charges apply (fees apply to non-AST tenancies only)
 Tenancy Agreement Fee: £300
 References per Tenant/Guarantor: £60
 Inventory check (approx. £100 – £250 inc. VAT)
 chestertons.co.uk/property-to-rent/applicable-fees

36 MONTPELIER SQUARE
KNIGHTSBRIDGE SW7

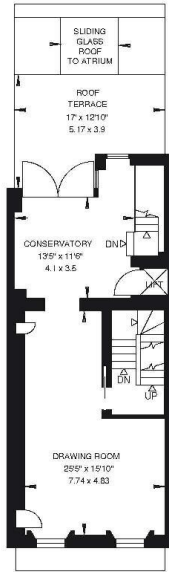
Gross Internal Area = 395 sq. metres
4247 sq. feet
Roof Terrace Area = 18 sq. metres
196 sq. feet



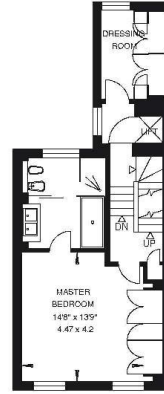
LOWER GROUND FLOOR



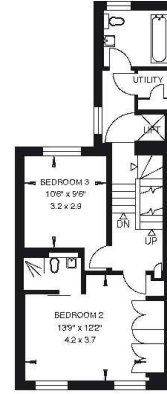
GROUND FLOOR



FIRST FLOOR



SECOND FLOOR



THIRD FLOOR



FOURTH FLOOR

