



Sloane Street

London, SW1X

£16,250 per month
(£3,750 per week)

Immaculately presented 6th floor apartment of circa 1,965 sq ft, with concierge, air-cooling system, wood flooring and lift access. The property is finished to a very high standard and located in a prestigious building, moments from Sloane Square.



Sloane Street

London, SW1X

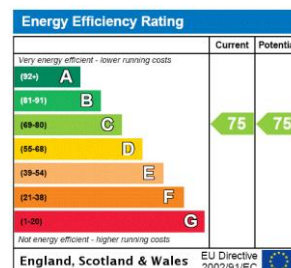
- Concierge
- Lift access
- Wood flooring
- Air cooling
- Three double bedrooms
- Three bathrooms
- Moments from Sloane Square



An immaculately presented 6th floor apartment of circa 1,965 sq ft, with concierge, air-cooling system throughout, wood flooring and lift access.

The property is finished to a very high standard and located in a prestigious building, moments from Sloane Square. This spacious lateral apartment offers accommodation that comprises an impressive double reception with large windows and feature fireplaces, fully fitted kitchen with high quality modern appliances, three double bedrooms all with built-in storage and three bathrooms.

Minimum Term: 12 months
Deposit Required: £22,500.00
Local Authority: Westminster
Council Tax Band: H
EPC Rating: C
Unfurnished



Chestertons Knightsbridge & Belgravia Lettings

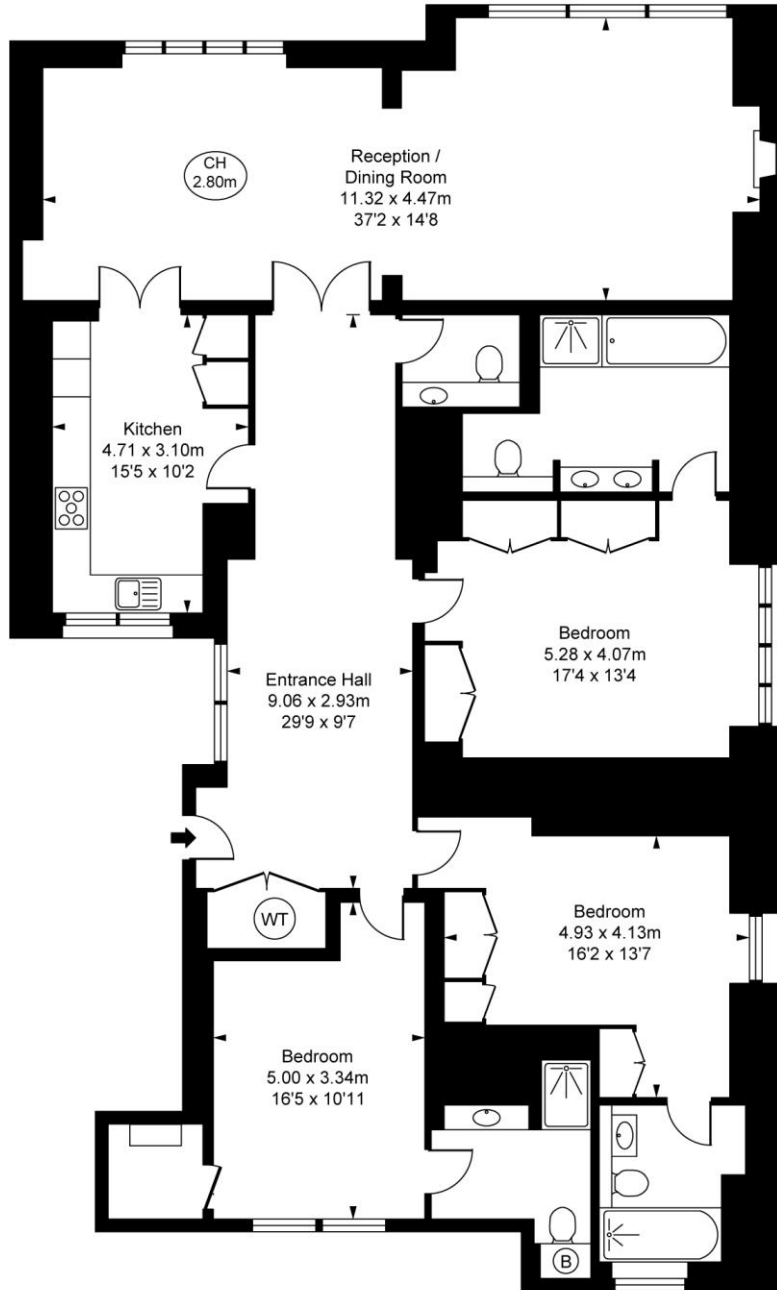
31 Lowndes Street
 London
 SW1X 9HX
 knightsbridge@chestertons.co.uk
 02072353530
 chestertons.co.uk

Additional tenant charges apply (fees apply to non-AST tenancies only)
 Tenancy Agreement Fee: £300
 References per Tenant/Guarantor: £60
 Inventory check (approx. £100 – £250 inc. VAT)
 chestertons.co.uk/property-to-rent/applicable-fees

Sloane Street, SW1X
Approximate Gross Internal Area
181.64 sq m / 1,955 sq ft



(CH = Ceiling Heights)



Fifth Floor

This plan is not to scale. It is for guidance and not for valuation purposes.
All measurements and areas are approximate only, and have been prepared in accordance with the current edition of the RICS Code of Measuring Practice.
© Fulham Performance

Chesterton Global Ltd trading as Chestertons for themselves and for the vendor of this property whose agents they are, give notice that (i) these particulars do not constitute any part of an offer or contract, (ii) all statements contained within these particulars are made without responsibility on the part of Chestertons or the vendor, (iii) whilst made in good faith, none of the statements contained within these particulars are to be relied upon as a statement or representation of fact, (iv) any intending purchasers must satisfy themselves by inspection or otherwise as to the correctness of each of the statements contained within these particulars, (v) the vendor does not make or give either Chestertons or any person in their employment any authority to make or give representation or warranty whatsoever in relation to this property. Wide angle lenses may be used. ©Copyright Chestertons | Chesterton Global Ltd | Registered Office 40 Connaught Street, Hyde Park, London W2 2AB Registered Company Number 05334580.



This paper is
100% recyclable