



Ennismore Gardens

London, SW7

£19,478.33 per month
(£4,495 per week)

Beautifully refurbished four bedroom and four bathroom house of circa 2,260 sq ft, situated on a popular garden square.

Features include wood flooring, guest WC and a walk in wardrobe. The accommodations offers four double bedrooms, four bathrooms and a large open plan kitchen/dining room and reception.



Ennismore Gardens

London, SW7

- Roof terrace
- House full of character
- Fully furnished
- High ceilings
- Four en-suites
- Two separate entrances



Ennismore Gardens is perfectly located opposite Hyde Park and just a short walk from both South Kensington and the amenities and popular shopping experience offer on Brompton Road and Harrods.

Minimum Term: 12 months
Deposit Required: £26,970.00
Local Authority: City of Westminster
Council Tax Band: H
EPC Rating: C
Furnished

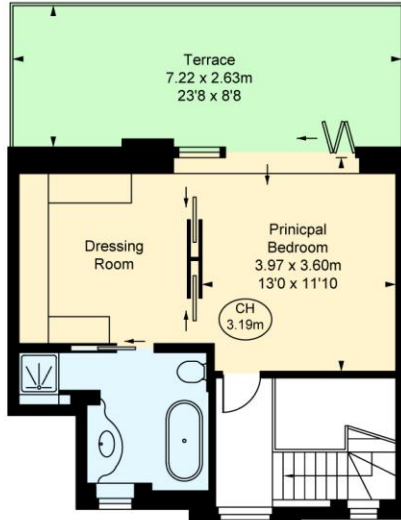
Energy Efficiency Rating		Current	Potential
Very energy efficient - lower running costs			
(92-100)	A		
(81-91)	B		
(69-80)	C	73	80
(55-68)	D		
(39-54)	E		
(21-38)	F		
(1-20)	G		
Not energy efficient - higher running costs			
England, Scotland & Wales		EU Directive 2002/91/EC	

Chestertons Knightsbridge & Belgravia Lettings

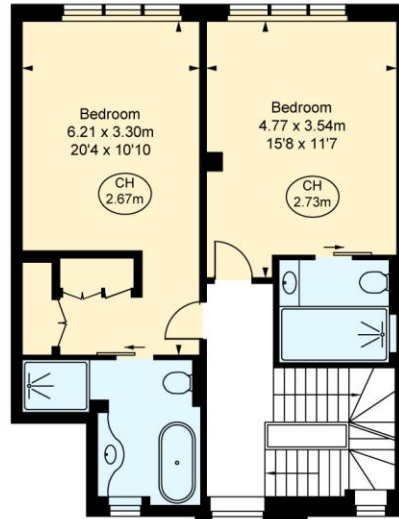
31 Lowndes Street
 London
 SW1X 9HX
 knightsbridge@chestertons.co.uk
 02072353530
 chestertons.co.uk

Additional tenant charges apply (fees apply to non-AST tenancies only)
 Tenancy Agreement Fee: £300
 References per Tenant/Guarantor: £60
 Inventory check (approx. £100 – £250 inc. VAT)
 chestertons.co.uk/property-to-rent/applicable-fees

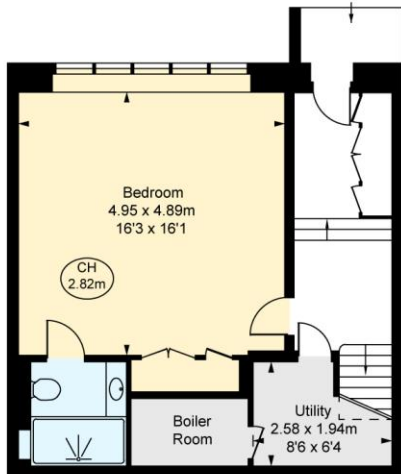
All Saints Church House,
 Ennismore Gardens, SW7
 Approximate Gross Internal Area
 209.98 sq m / 2,260 sq ft
 (Including restricted height
 under 1.5m [- - -])
 (CH = Ceiling Heights)



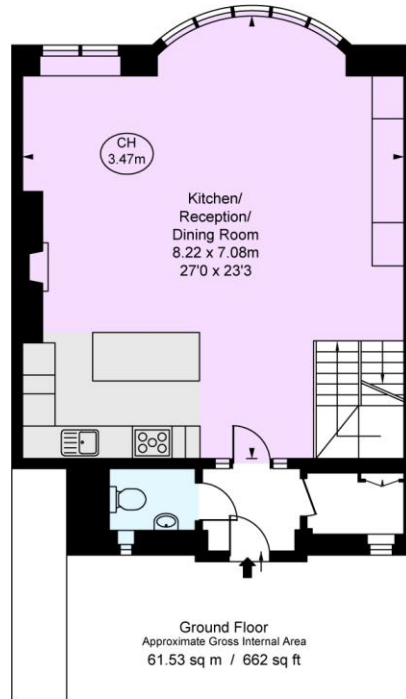
Second Floor
 Approximate Gross Internal Area
 40.96 sq m / 441 sq ft



First Floor
 Approximate Gross Internal Area
 59.28 sq m / 638 sq ft



Lower Ground Floor
 Approximate Gross Internal Area
 48.21 sq m / 519 sq ft



Ground Floor
 Approximate Gross Internal Area
 61.53 sq m / 662 sq ft

This plan is not to scale. It is for guidance and not for valuation purposes.
 All measurements and areas are approximate only, and have been prepared in accordance with the current edition of the RICS Code of Measuring Practice.
 © Fulham Performance

Chesterton Global Ltd trading as Chestertons for themselves and for the vendor of this property whose agents they are, give notice that (i) these particulars do not constitute any part of an offer or contract, (ii) all statements contained within these particulars are made without responsibility on the part of Chestertons or the vendor, (iii) whilst made in good faith, none of the statements contained within these particulars are to be relied upon as a statement or representation of fact, (iv) any intending purchasers must satisfy themselves by inspection or otherwise as to the correctness of each of the statements contained within these particulars, (v) the vendor does not make or give either Chestertons or any person in their employment any authority to make or give representation or warranty whatsoever in relation to this property. Wide angle lenses may be used. ©Copyright Chestertons | Chesterton Global Ltd | Registered Office 40 Connaught Street, Hyde Park, London W2 2AB Registered Company Number 05334580.



This paper is
 100% recyclable