



# Elizabeth Street

Belgravia, SW1W

£2,816.67 per month  
(£650 per week)

Extremely spacious, well-presented apartment on the 4th floor with lift access and porter. The property benefits from a well-proportioned reception room, double bedroom, modern kitchen and a large private balcony. Utilities included in the rent.



# Elizabeth Street

Belgravia, SW1W

- Utilities included in the rent
- 4th floor with lift access
- Porter
- Large private balcony
- Convenient to Victoria and Sloane Square

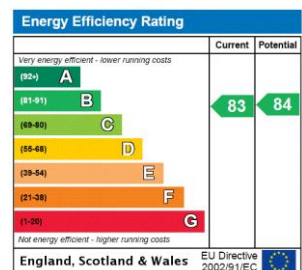




An extremely spacious, bright and well-presented apartment on the 4th floor with lift access and porter. The property benefits from a well-proportioned reception room, double bedroom, modern kitchen and a large private balcony. Utilities included in the rent.

Located on the very popular Elizabeth Street just a short walk from Victoria & Sloane Square and providing access to a large choice of bars and restaurants. Furnished. Long let.

**Minimum Term:** 12 months  
**Deposit Required:** £3,250.00  
**Local Authority:** Westminster City Council  
**Council Tax Band:** E  
**EPC Rating:** B  
**Furnished**



### Chestertons Knightsbridge & Belgravia Lettings

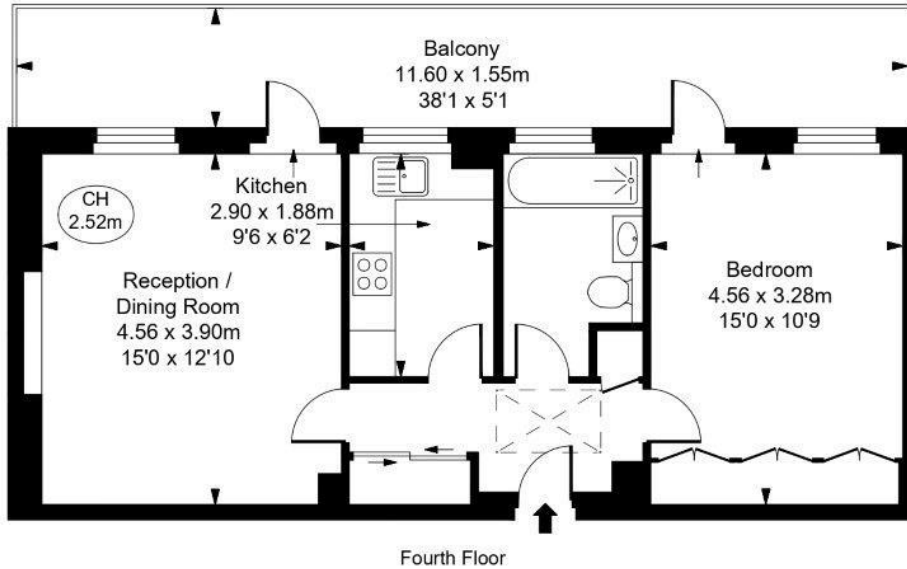
31 Lowndes Street  
 London  
 SW1X 9HX  
 knightsbridge@chestertons.co.uk  
 02072353530  
 chestertons.co.uk

Additional tenant charges apply (fees apply to non-AST tenancies only)  
 Tenancy Agreement Fee: £300  
 References per Tenant/Guarantor: £60  
 Inventory check (approx. £100 – £250 inc. VAT)  
 chestertons.co.uk/property-to-rent/applicable-fees

Mountbarrow House,  
Elizabeth Street, SW1W

Approximate Gross Internal Area  
50.99 sq m / 549 sq ft

( CH = Ceiling Heights )



This plan is not to scale. It is for guidance and not for valuation purposes.  
All measurements and areas are approximate only, and have been prepared in accordance with the current edition of the RICS Code of Measuring Practice.  
© Fulham Performance

