



Ebury Street

Belgravia, SW1W

£4,008.33 per month
(£925 per week)

A charming duplex apartment comprising part of an impressive period building. Located in central Belgravia, moments from Victoria station and Sloane Square.



Ebury Street

Belgravia, SW1W

- Rent inclusive of utilities
- Charming duplex apartment
- Separate modern kitchen
- Conveniently located for Victoria station

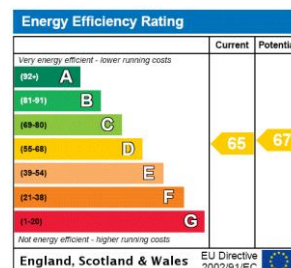


A charming duplex apartment comprising part of an impressive period building. Located in central Belgravia, moments from Victoria station and Sloane Square.

Arranged over two floors and offering an approximate 767 sq ft of living space, the accommodation includes a spacious reception, separate fully fitted kitchen, two double bedrooms and a modern bathroom suite.

(Photos as previously marketed, décor and furnishings may vary)

Minimum Term: 12 months
Deposit Required: £4,625.00
Local Authority: City Of Westminster
Council Tax Band: G
EPC Rating: C
Furnished



Chestertons Knightsbridge & Belgravia Lettings

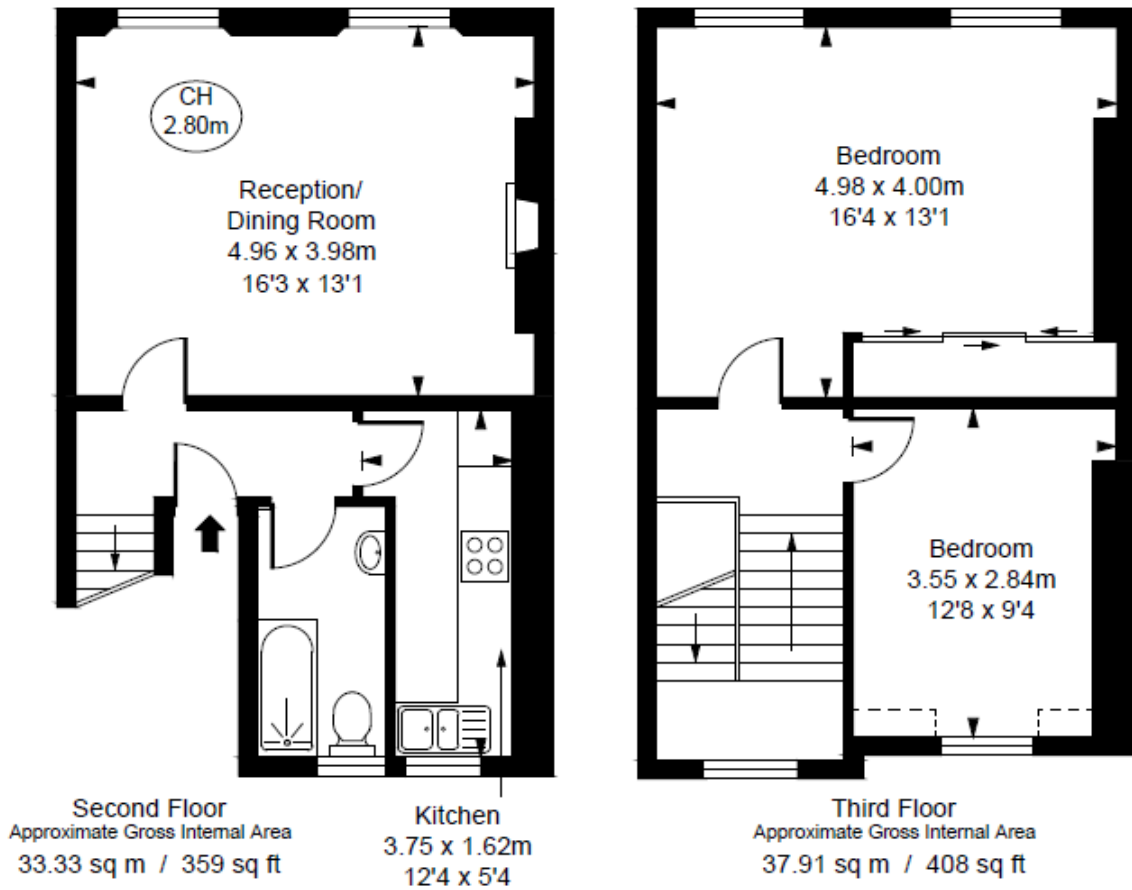
31 Lowndes Street
 London
 SW1X 9HX
 knightsbridge@chestertons.co.uk
 02072353530
 chestertons.co.uk

Additional tenant charges apply (fees apply to non-AST tenancies only)
 Tenancy Agreement Fee: £300
 References per Tenant/Guarantor: £60
 Inventory check (approx. £100 – £250 inc. VAT)
chestertons.co.uk/property-to-rent/applicable-fees

Ebury Street, SW1W
Approximate Gross Internal Area
71.25 sq m / 767 sq ft

(Including restricted height
under 1.5m [] [] [] [] [])

(CH = Ceiling Heights)



This plan is not to scale. It is for guidance and not for valuation purposes.
All measurements and areas are approximate only, and have been prepared in accordance with the current edition of the RICS Code of Measuring Practice.
© Fulham Performance

