

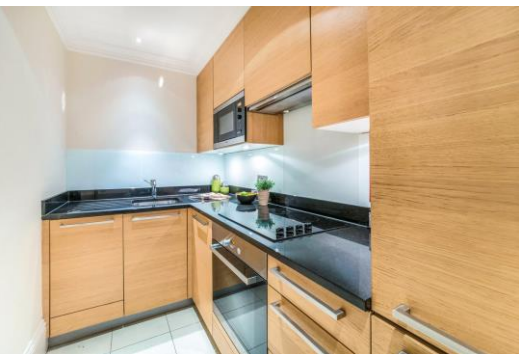


Eaton Square

Belgravia, SW1W

£2,383.33 per month
(£550 per week)

A stunning, newly refurbished studio apartment on one of London's most sought-after garden squares. Eaton Square Garden access available to residents. Utilities included in the rent.



Eaton Square

Belgravia, SW1W

- Utilities included in the rent
- Interior designed studio apartment
- Spacious reception/bedroom
- Separate kitchen and bathroom
- Located on sought after Eaton Square
- Photos as previously marketed

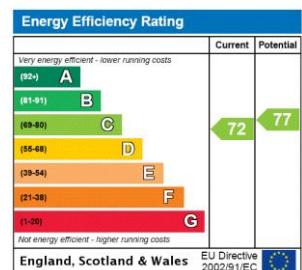


A stunning, newly refurbished studio apartment on one of London's most sought-after garden squares. The property benefits from a spacious studio room, fully fitted kitchen, well equipped bathroom and porter. Eaton Square Garden access available to residents. Utilities included in the rent.

Eaton Square is one of Belgravia's three principal garden squares, alongside Belgrave Square and Chester Square. Built in the mid-19th century the properties on Eaton Square enjoy wonderful views over the private lawn gardens, of which the residents have exclusive use.

(Photos as previously marketed, décor and furniture my vary)

Minimum Term: 12 months
Deposit Required: £2,750
Local Authority: City of Westminster
Council Tax Band:
EPC Rating: C
Furnished, Part Furnished, Unfurnished



Chestertons Knightsbridge & Belgravia Lettings

31 Lowndes Street
 London
 SW1X 9HX
 knightsbridge@chestertons.co.uk
 02072353530
 chestertons.co.uk

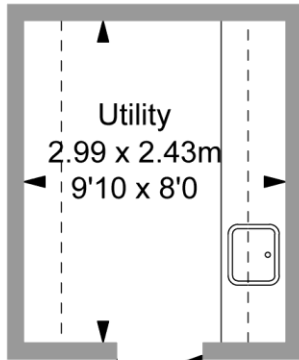
Additional tenant charges apply (fees apply to non-AST tenancies only)
 Tenancy Agreement Fee: £300
 References per Tenant/Guarantor: £60
 Inventory check (approx. £100 – £250 inc. VAT)
chestertons.co.uk/property-to-rent/applicable-fees

Eaton Square, SW1W

Approximate Gross Internal Area
 39.34 sq m / 423 sq ft
 Utility
 7.26 sq m / 78 sq ft

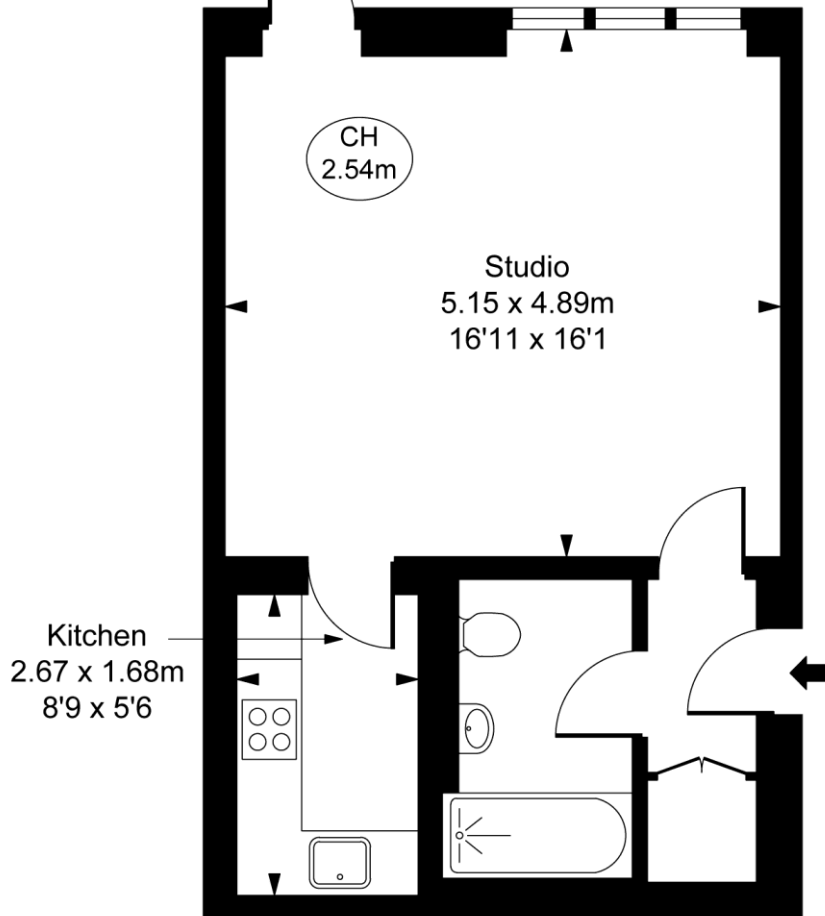
Total Areas Including Storage
 46.60 sq m / 502 sq ft

(Including restricted height
 under 1.5m (-----))
 (CH = Ceiling Heights)



(not shown in exact location or orientation)

Access to Communal Patio



Lower Ground Floor

This plan is not to scale. It is for guidance and not for valuation purposes.
 All measurements and areas are approximate only, and have been prepared in accordance with the current edition of the RICS Code of Measuring Practice.
 © Fulham Performance

