



## Chester Street

Belgravia, SW1X

£9,533.33 per month  
(£2,200 per week)

SHORT LET Contemporary apartment of circa 1,400 square feet in a Georgian townhouse. The property benefits from lift access, on-site caretaker, large reception/dining room, separate modern kitchen, three double bedrooms and three bathrooms.



# Chester Street

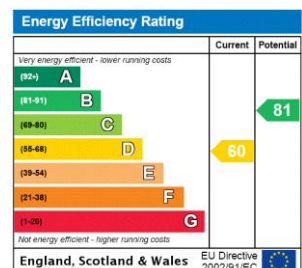
Belgravia, SW1X

- SHORT LET
- Three bedrooms
- Three bathrooms
- Air cooling
- Lift
- Caretaker



‘Contemporary apartment of circa 1,400 square feet in an impressive Georgian townhouses.’

**Minimum Term:** 1 months  
**Deposit Required:** £8,800.00  
**Local Authority:** Westminster City Council  
**Council Tax Band:** H  
**EPC Rating:** D  
**Furnished**



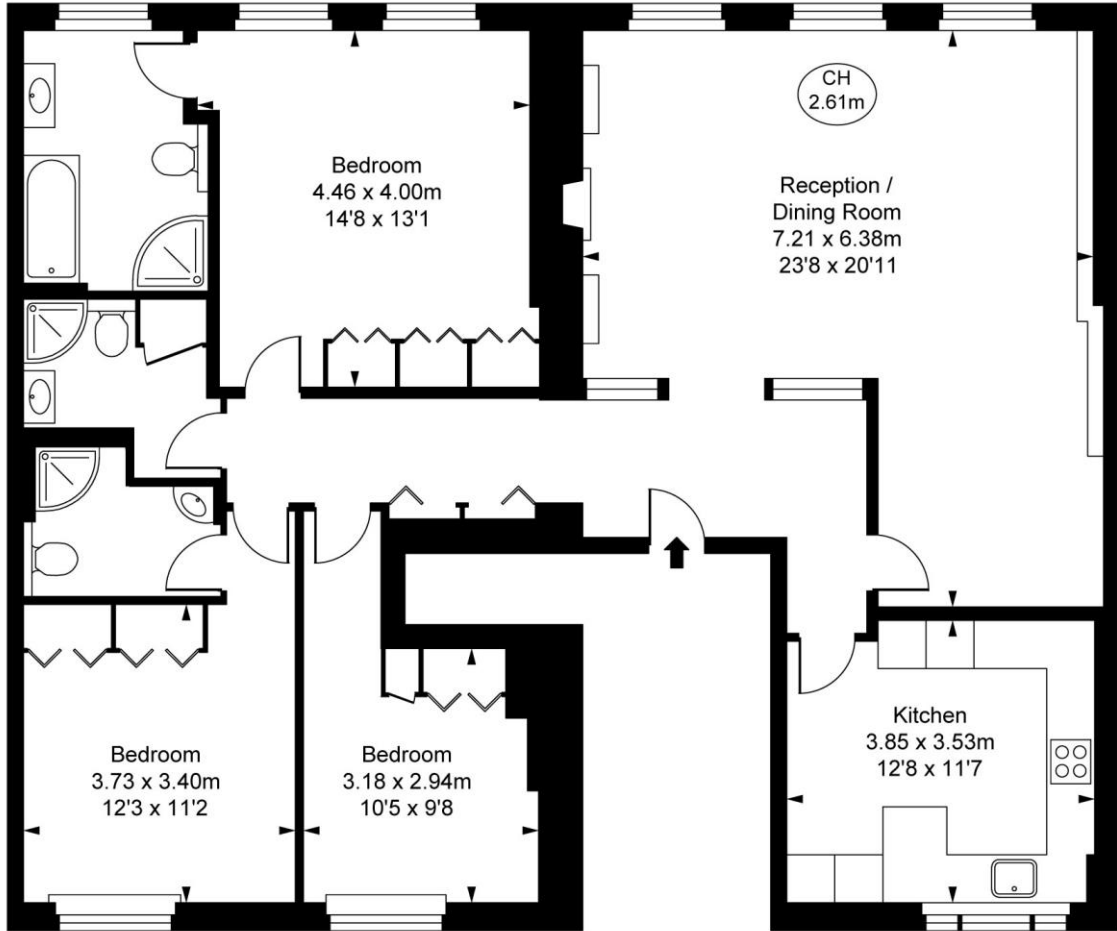
### *Chestertons Knightsbridge & Belgravia Lettings*

31 Lowndes Street  
London  
SW1X 9HX  
lettings.knightsbridge@chestertons.com  
02072353530  
chestertons.co.uk

Additional tenant charges apply (fees apply to non-AST tenancies only)  
Tenancy Agreement Fee: £300  
References per Tenant/Guarantor: £60  
Inventory check (approx. £100 – £250 inc. VAT)  
chestertons.co.uk/property-to-rent/applicable-fees

Chester Street, SW1X  
Approximate Gross Internal Area  
129.49 sq m / 1,394 sq ft

( CH = Ceiling Heights )



Second Floor

This plan is not to scale. It is for guidance and not for valuation purposes.  
All measurements and areas are approximate only, and have been prepared in accordance with the current edition of the RICS Code of Measuring Practice.  
© Fulham Performance

