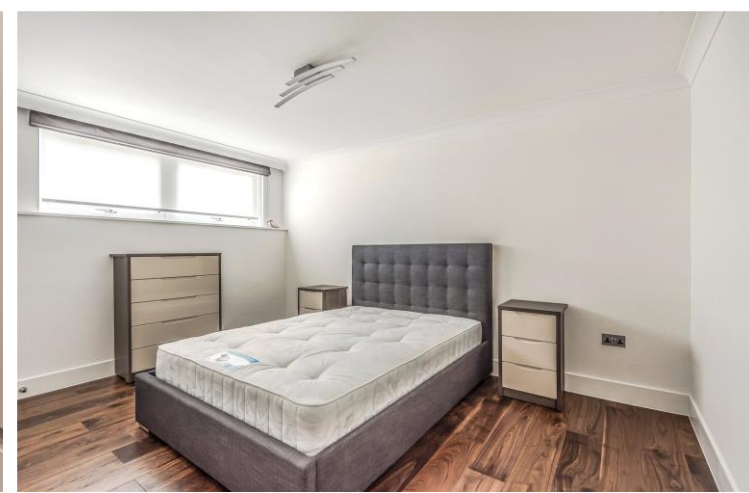




Whaddon House
William Mews, SW1X

CHESTERTONS





Extremely bright and very well presented contemporary apartment in a secure portered development. The flat benefits from wood flooring, double bedroom, spacious reception/dining space, modern bathroom suite and a separate fully fitted kitchen.+

- Wood flooring throughout
- Porter
- Large double bedroom
- Modern kitchen and bathroom
- Ideally located for Knightsbridge/Harrods/Sloane street

£2,383.33 pcm

Additional tenant charges apply (fees apply to non-AST tenancies only)

Tenancy Agreement Fee: £300

References per Tenant/Guarantor: £60

Inventory check (approx. £100 – £250 inc. VAT)

[chestertons.com/property-to-rent/applicable-fees](https://www.chestertons.com/property-to-rent/applicable-fees)

Energy Efficiency Rating		Current	Potential
95-100	A		
81-94	B		
69-80	C		76
55-68	D	55	
39-54	E		
21-38	F		
1-20	G		

Not energy efficient - higher running costs

England, Scotland & Wales EU Directive 2002/91/EC

EPC Rating: D
Furnished

Chestertons Knightsbridge & Belgravia Lettings

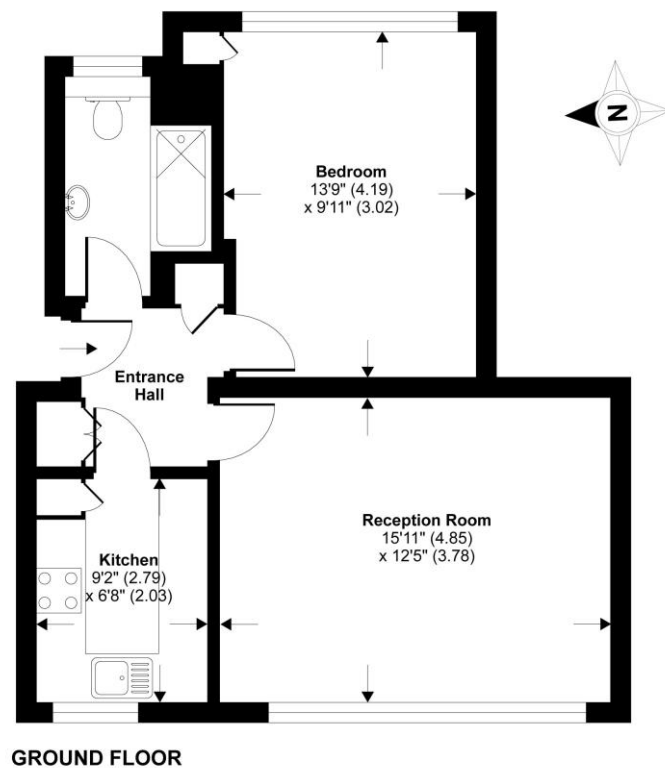
31 Lowndes Street
London
SW1X 9HX

lettings.knightsbridge@chestertons.com

02072353530

[chestertons.com](https://www.chestertons.com)

Whaddon House, London, SW1X



TOTAL GROSS INTERNAL FLOOR AREA 534 SQ FT 49.6 SQ METRES

Whilst every attempt has been made to ensure the accuracy of the floor plan contained here, measurements of doors, windows and rooms are approximate and no responsibility is taken for any error, omission or misstatement. These plans are for representation purposes only as defined by RICS Code of Measuring Practice and should be used as such by any prospective purchaser. Specifically no guarantee is given on the total square footage of the property if quoted on this plan. Any figure given is for initial guidance only and should not be relied on as a basis of valuation.

Copyright nichecom.co.uk 2019 Produced for Chestertons REF : 489742

Chesterton Global Ltd trading as Chestertons for themselves and for the vendor of this property whose agents they are, give notice that (i) these particulars do not constitute any part of an offer or contract, (ii) all statements contained within these particulars are made without responsibility on the part of Chestertons or the vendor, (iii) whilst made in good faith, none of the statements contained within these particulars are to be relied upon as a statement or representation of fact, (iv) any intending purchasers must satisfy themselves by inspection or otherwise as to the correctness of each of the statements contained within these particulars, (v) the vendor does not make or give either Chestertons or any person in their employment any authority to make or give representation or warranty whatsoever in relation to this property. Wide angle lenses may be used. ©Copyright Chestertons | Chesterton Global Ltd | Registered Office 40 Connaught Street, Hyde Park, London W2 2AB Registered Company Number 05334580.



This paper is
100% recyclable