



# Eaton Square

Belgravia, SW1W

£5,850 per month  
(£1,350 per week)

This stunning apartment is situated on the very popular Western end of one of the most prestigious garden squares in London. The building benefits from day portorage, lift, access to the Square Gardens, security patrols at night around the Square.

CHESTERTONS

## 4, 72 Eaton Square, SW1

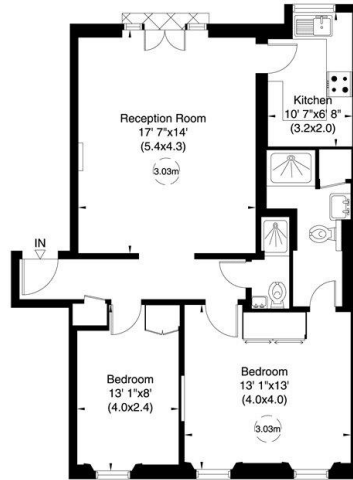
Gross internal area (approx.)

70 Sq m (758 Sq ft)

For identification only, Not to Scale



Floor Plan by **capital group** 020 8671 7722



Third Floor

Not to scale, for guidance only and must not be relied upon as a statement of fact. All measurements and areas are approximate only (and have been prepared in accordance with the current edition of the RICS Code of Measuring Practice).

**Minimum Term:** 12 months  
**Deposit Required:** £8,100.00  
**Local Authority:** City of Westminster  
**Council Tax Band:** G  
**EPC Rating:** D  
**Furnished**

Energy Efficiency Rating		Current	Potential
Very energy efficient - lower running costs			
(92+)	A		
(81-91)	B		
(69-80)	C		
(55-68)	D	68	81
(39-54)	E		
(21-38)	F		
(1-20)	G		
Not energy efficient - higher running costs			
England, Scotland & Wales		EU Directive 2002/91/EC	

### Chestertons Knightsbridge & Belgravia Lettings

31 Lowndes Street  
 London  
 SW1X 9HX  
 knightsbridge@chestertons.co.uk  
 02072353530  
 chestertons.co.uk

Additional tenant charges apply (fees apply to non-AST tenancies only)

Tenancy Agreement Fee: £300

References per Tenant/Guarantor: £60

Inventory check (approx. £100 – £250 inc. VAT)

[chestertons.co.uk/property-to-rent/applicable-fees](http://chestertons.co.uk/property-to-rent/applicable-fees)

Chesterton Global Ltd trading as Chestertons for themselves and for the vendor of this property whose agents they are, give notice that (i) these particulars do not constitute any part of an offer or contract, (ii) all statements contained within these particulars are made without responsibility on the part of Chestertons or the vendor, (iii) whilst made in good faith, none of the statements contained within these particulars are to be relied upon as a statement or representation of fact, (iv) any intending purchasers must satisfy themselves by inspection or otherwise as to the correctness of each of the statements contained within these particulars, (v) the vendor does not make or give either Chestertons or any person in their employment any authority to make or give representation or warranty whatsoever in relation to this property. Wide angle lenses may be used. ©Copyright Chestertons | Chesterton Global Ltd | Registered Office 40 Connaught Street, Hyde Park, London W2 2AB Registered Company Number 05334580.



This paper is 100% recyclable