



Trevor Place

London, SW7

£21,450 per month
(£4,950 per week)

A stunning townhouse of circa 2,644 sq. ft., arranged over five floors, located near Harrods in central Knightsbridge. Features include a double reception, private patio and wood flooring.

The house has been designed and finished to an exceptionally high standard. The accommodation is arranged over five floors and includes two receptions, modern kitchen/breakfast room with a dining room, five bedrooms, three bathrooms and a private patio.



Trevor Place

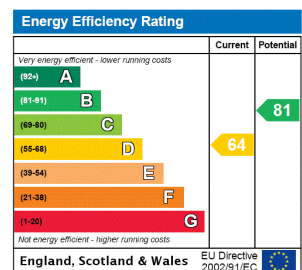
London, SW7

- Beautifully presented family home
- Wood flooring in the reception
- Private patio
- Perfectly situated between Harrods and Hyde Park
- Professionally managed



Trevor Place is one of Knightsbridge's premier addresses and is conveniently located between Brompton Road and Hyde Park and within a short walking distance of Harrods and the many world-renowned shops of Knightsbridge.

Minimum Term: 12 months
Deposit Required: £29,700.00
Local Authority: City of Westminster
Council Tax Band: H
EPC Rating: D
Furnished

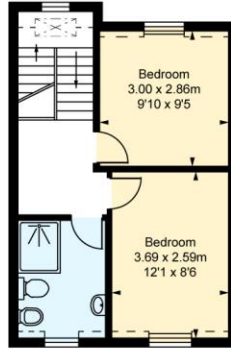


Chestertons Knightsbridge & Belgravia Lettings

31 Lowndes Street
 London
 SW1X 9HX
 knightsbridge@chestertons.co.uk
 02072353530
 chestertons.co.uk

Additional tenant charges apply (fees apply to non-AST tenancies only)
 Tenancy Agreement Fee: £300
 References per Tenant/Guarantor: £60
 Inventory check (approx. £100 – £250 inc. VAT)
chestertons.co.uk/property-to-rent/applicable-fees

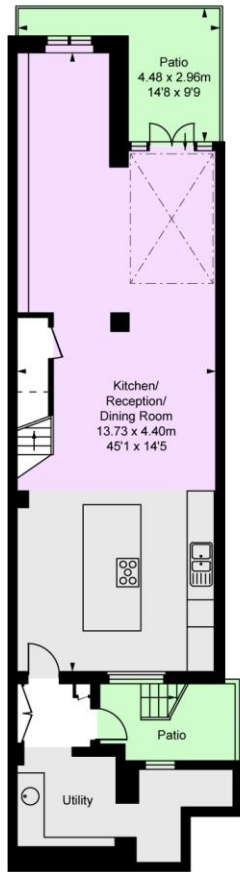
Trevor Place, SW7
 Approximate Gross Internal Area
 245.04 sq m / 2,638 sq ft
 (Excluding Void)
 (Including restricted height
 under 1.5m □ = □ □)
 (CH = Ceiling Heights)



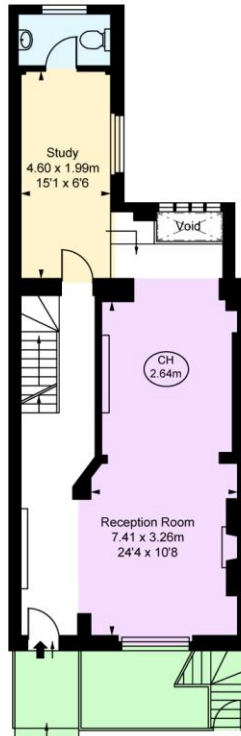
Third Floor
 Approximate Gross Internal Area
 32.54 sq m / 350 sq ft



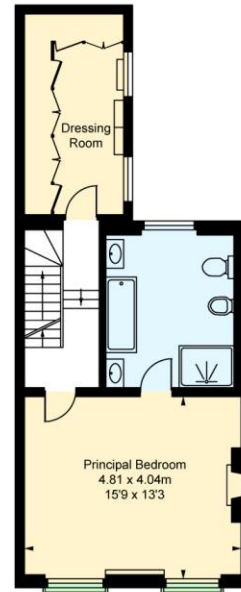
Second Floor
 Approximate Gross Internal Area
 46.73 sq m / 503 sq ft



Lower Ground Floor
 Approximate Gross Internal Area
 66.32 sq m / 714 sq ft



Ground Floor
 Approximate Gross Internal Area
 52.03 sq m / 560 sq ft



First Floor
 Approximate Gross Internal Area
 47.42 sq m / 510 sq ft

This plan is not to scale. It is for guidance and not for valuation purposes.
 All measurements and areas are approximate only, and have been prepared in accordance with the current edition of the RICS Code of Measuring Practice.
 © Fulham Performance

Chesterton Global Ltd trading as Chestertons for themselves and for the vendor of this property whose agents they are, give notice that (i) these particulars do not constitute any part of an offer or contract, (ii) all statements contained within these particulars are made without responsibility on the part of Chestertons or the vendor, (iii) whilst made in good faith, none of the statements contained within these particulars are to be relied upon as a statement or representation of fact, (iv) any intending purchasers must satisfy themselves by inspection or otherwise as to the correctness of each of the statements contained within these particulars, (v) the vendor does not make or give either Chestertons or any person in their employment any authority to make or give representation or warranty whatsoever in relation to this property. Wide angle lenses may be used. ©Copyright Chestertons | Chesterton Global Ltd | Registered Office 40 Connaught Street, Hyde Park, London W2 2AB Registered Company Number 05334580.



This paper is
 100% recyclable