



# Montrose Court

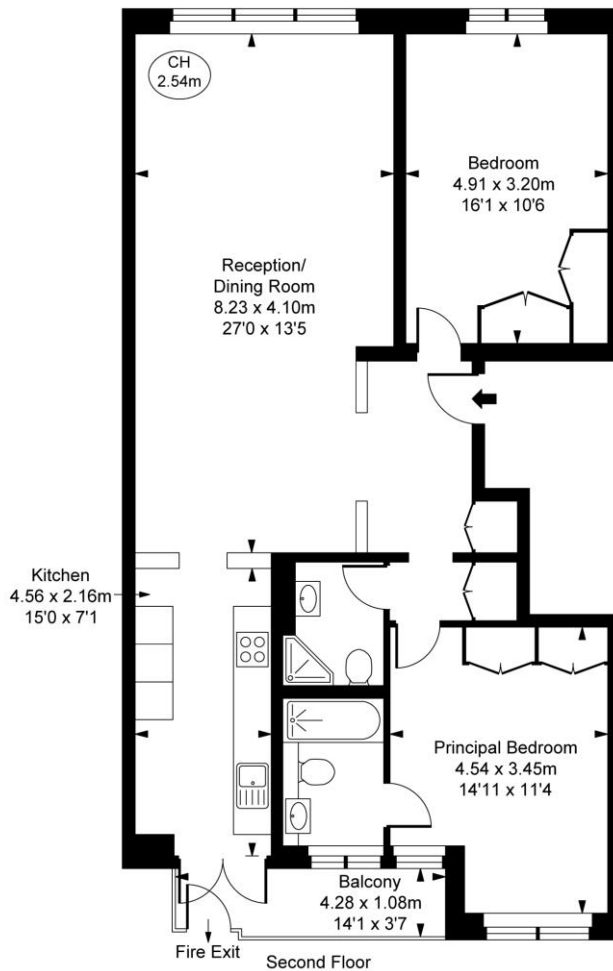
Exhibition Road, SW7

£6,716.67 per month  
(£1,550 per week)

Brand newly refurbished lateral apartment finished to exacting standards throughout. Montrose Court is a highly sought-after development, located on an opposite Hyde Park, with porter and lift access.

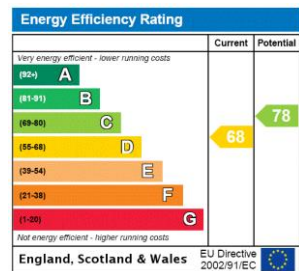
CHESTERTONS

Montrose Court, SW7  
 Approximate Gross Internal Area  
 90.79 sq m / 977 sq ft  
 ( CH = Ceiling Heights )



This plan is not to scale. It is for guidance and not for valuation purposes.  
 All measurements and areas are approximate only, and have been prepared in accordance with the current edition of the RICS Code of Measuring Practice.  
 © Fulham Performance

**Minimum Term:** 12 months  
**Deposit Required:** £9,300.00  
**Local Authority:** City Of Westminster  
**Council Tax Band:** G  
**EPC Rating:** D  
**Unfurnished**



### Chestertons Knightsbridge & Belgravia Lettings

31 Lowndes Street  
 London  
 SW1X 9HX  
 lettings.knightsbridge@chestertons.com  
 02072353530  
 chestertons.com

Additional tenant charges apply (fees apply to non-AST tenancies only)  
 Tenancy Agreement Fee: £300  
 References per Tenant/Guarantor: £60  
 Inventory check (approx. £100 – £250 inc. VAT)  
 chestertons.com/property-to-rent/applicable-fees

Chesterton Global Ltd trading as Chestertons for themselves and for the vendor of this property whose agents they are, give notice that (i) these particulars do not constitute any part of an offer or contract, (ii) all statements contained within these particulars are made without responsibility on the part of Chestertons or the vendor, (iii) whilst made in good faith, none of the statements contained within these particulars are to be relied upon as a statement or representation of fact, (iv) any intending purchasers must satisfy themselves by inspection or otherwise as to the correctness of each of the statements contained within these particulars, (v) the vendor does not make or give either Chestertons or any person in their employment any authority to make or give representation or warranty whatsoever in relation to this property. Wide angle lenses may be used. ©Copyright Chestertons | Chesterton Global Ltd | Registered Office 40 Connaught Street, Hyde Park, London W2 2AB Registered Company Number 05334580.



This paper is 100% recyclable