



Lowndes Square

Knightsbridge, SW1X

£8,500 per month
(£1,961.54 per week)

An impressive duplex apartment of circa 1,330 sq ft comprising part of a well maintained building with porter and lift access. The property is perfectly located on one of London's most prestigious garden squares.



Lowndes Square

Knightsbridge, SW1X

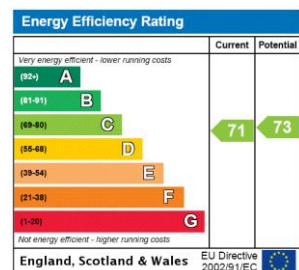
- Duplex apartment
- Lift access
- Porter
- Three bedrooms
- Three bathrooms



An impressive duplex apartment of circa 1,330 sq ft comprising part of a well maintained building with porter and lift access. The accommodation includes a large reception/dining room, two double bedrooms and a third single bedroom/study, three bathrooms, separate modern kitchen and guest WC.

The property is perfectly located on one of London's most prestigious garden squares, moments from Sloane Street and Hyde Park.

Minimum Term: 12 months
Deposit Required: £11,769.23
Local Authority: Westminster City Council
Council Tax Band: H
EPC Rating: C
Furnished



Chestertons Knightsbridge & Belgravia Lettings

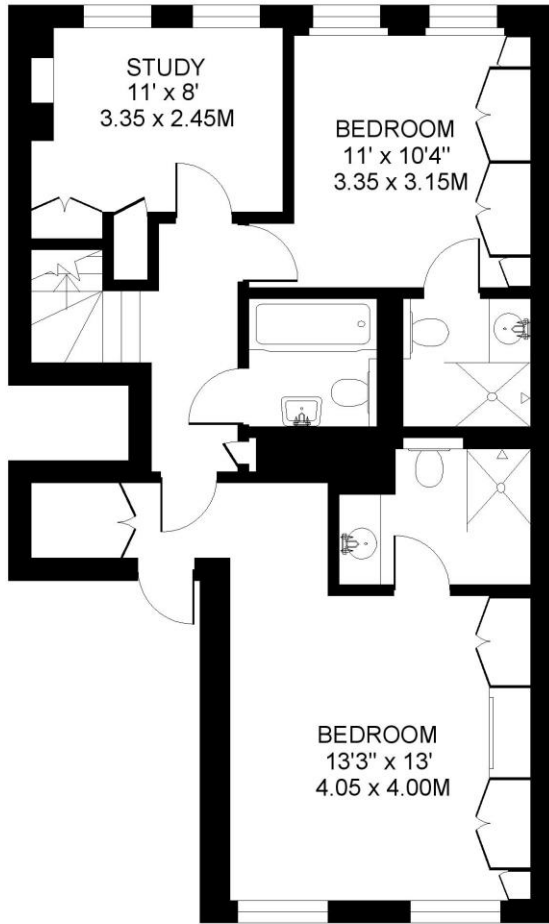
31 Lowndes Street
 London
 SW1X 9HX
 knightsbridge@chestertons.co.uk
 02072353530
 chestertons.co.uk

Additional tenant charges apply (fees apply to non-AST tenancies only)
 Tenancy Agreement Fee: £300
 References per Tenant/Guarantor: £60
 Inventory check (approx. £100 – £250 inc. VAT)
 chestertons.co.uk/property-to-rent/applicable-fees

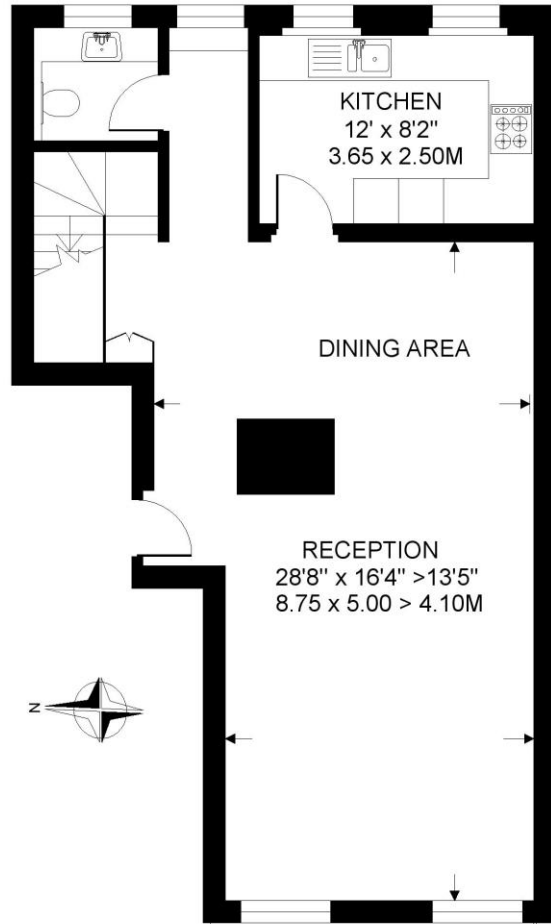
LOWNDES SQUARE, BELGRAVIA, LONDON SW1

APPROXIMATE INTERNAL (LIVING) FLOOR AREA

1330 SQ.FT. / 123.5 SQ.M.



FIRST FLOOR 669 SQ.FT.



SECOND FLOOR 662 SQ.FT.

COPYRIGHT: Floorplan produced for "Henry & James Estate Agents Ltd." by floorplanners.co.uk

This plan is not to a given scale, and is for guidance only, and must not be relied upon as a statement of fact.

All measurements are maximum, and include window bays, and wardrobes where applicable.

This plan has been prepared in accordance with the "RICS" Code of Measuring Practice.

Where a room has a sloping ceiling, the dotted line indicates height at 1.5m. and measurements are shown at floor level.

