



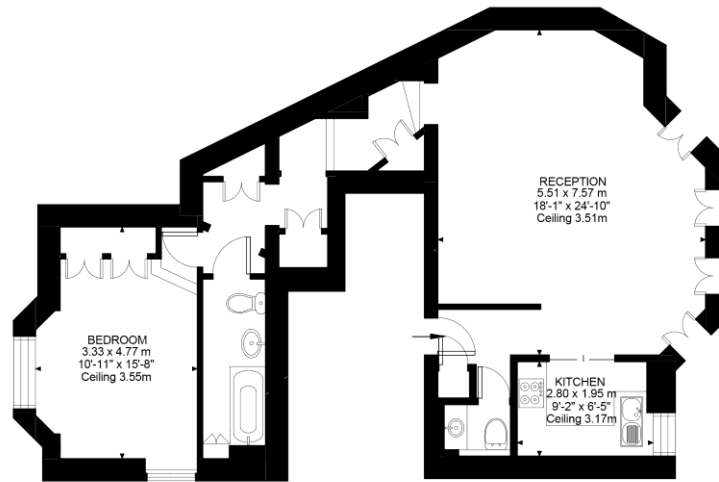
Egerton Gardens

Knightsbridge, SW3

£7,800 per month
(£1,800 per week)

SHORT LET - A superb one bedroom apartment measuring approximately 796 sqft and situated in a prestigious enclave of Knightsbridge with an impressive drawing offering direct access onto this charming communal garden.

CHESTERTONS

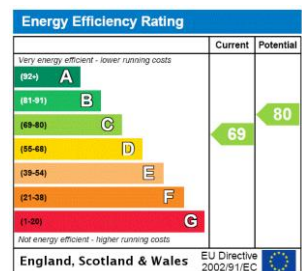


Ground Floor
796 ft²

Egerton Gardens, SW3
Approximate Gross Internal Area
73.94 SQ.M / 796 SQ.FT

Illustration for identification purposes only. Not to scale.
Floor Plan Drawn According To RICS Guidelines.

Minimum Term: 1 months
Deposit Required: £7,200.00
Local Authority: Royal Borough of Kensington & Chelsea
Council Tax Band: G
EPC Rating: C
Furnished



Chestertons Knightsbridge & Belgravia Lettings

31 Lowndes Street
London
SW1X 9HX
knightsbridge@chestertons.co.uk
02072353530
chestertons.co.uk

Additional tenant charges apply (fees apply to non-AST tenancies only)

Tenancy Agreement Fee: £300

References per Tenant/Guarantor: £60

Inventory check (approx. £100 – £250 inc. VAT)

chestertons.co.uk/property-to-rent/applicable-fees

Chesterton Global Ltd trading as Chestertons for themselves and for the vendor of this property whose agents they are, give notice that (i) these particulars do not constitute any part of an offer or contract, (ii) all statements contained within these particulars are made without responsibility on the part of Chestertons or the vendor, (iii) whilst made in good faith, none of the statements contained within these particulars are to be relied upon as a statement or representation of fact, (iv) any intending purchasers must satisfy themselves by inspection or otherwise as to the correctness of each of the statements contained within these particulars, (v) the vendor does not make or give either Chestertons or any person in their employment any authority to make or give representation or warranty whatsoever in relation to this property. Wide angle lenses may be used. ©Copyright Chestertons | Chesterton Global Ltd | Registered Office 40 Connaught Street, Hyde Park, London W2 2AB Registered Company Number 05334580.



This paper is
100% recyclable