



# Eaton Terrace

London, SW1W

£52,000 per month  
(£12,000 per week)

SHORT LET - A stunning townhouse of circa 2,921 sq. ft., arranged over five floors, located in central Belgravia. Features include wooden floors, a rear garden, air conditioning and high ceilings.

Recently refurbished throughout, the property includes a spacious double reception, large kitchen/dining room, master bedroom with en-suite bathroom, four further double bedrooms, family bathroom and guest WC. The house also benefits from a large garden.



# Eaton Terrace

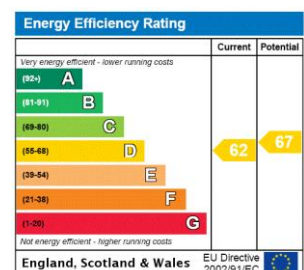
London, SW1W

- SHORT LET
- Air conditioning
- Modern
- Full equipped
- Garden
- Five bedrooms



Eaton Terrace is location moments from Pimlico Road and Sloane Square, with Kings Road and Victoria Station also just a short walk.

**Minimum Term:** 1 months  
**Deposit Required:** £48,000.00  
**Local Authority:** City of Westminster  
**Council Tax Band:** H  
**EPC Rating:** D  
**Furnished**



### Chestertons Knightsbridge & Belgravia Lettings

31 Lowndes Street  
 London  
 SW1X 9HX  
 knightsbridge@chestertons.co.uk  
 02072353530  
 chestertons.co.uk

Additional tenant charges apply (fees apply to non-AST tenancies only)  
 Tenancy Agreement Fee: £300  
 References per Tenant/Guarantor: £60  
 Inventory check (approx. £100 – £250 inc. VAT)  
[chestertons.co.uk/property-to-rent/applicable-fees](http://chestertons.co.uk/property-to-rent/applicable-fees)

Eaton Terrace, SW1W

Approximate Gross Internal Area  
269.43 sq m / 2,900 sq ft

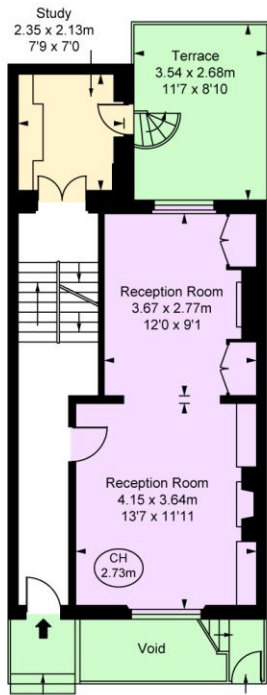
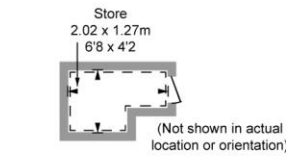
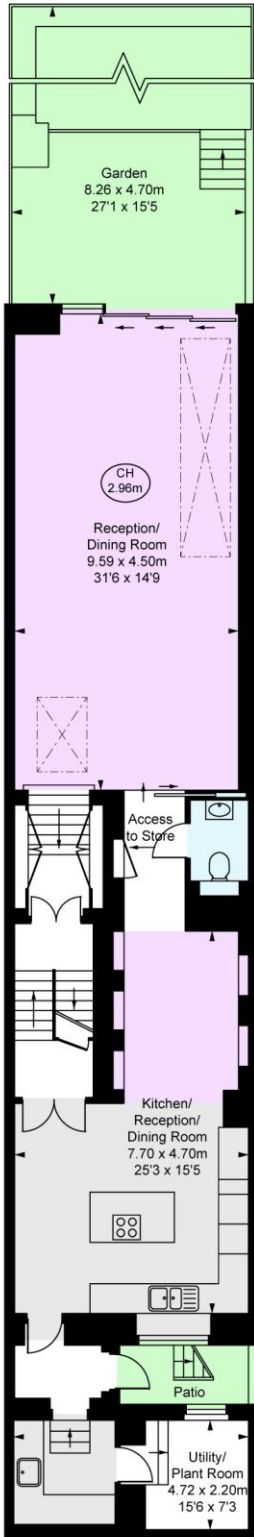
Store  
2.17 sq m / 23 sq ft

Total Areas Shown On Plan  
271.60 sq m / 2,924 sq ft

(Including Void)

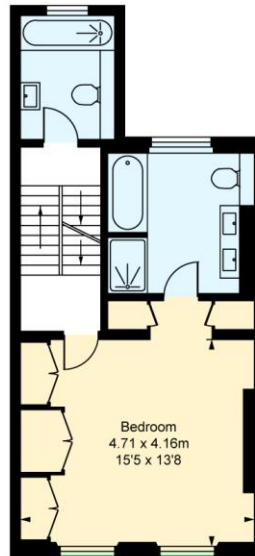
(Including restricted height  
under 1.5m □ = □ □)

(CH = Ceiling Heights)

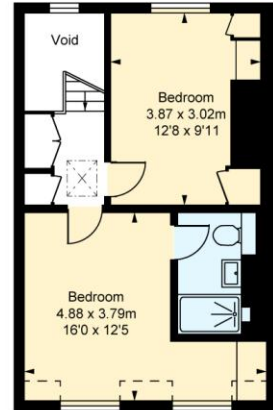


Lower Ground Floor  
Approximate Gross Internal Area  
106.49 sq m / 1,146 sq ft

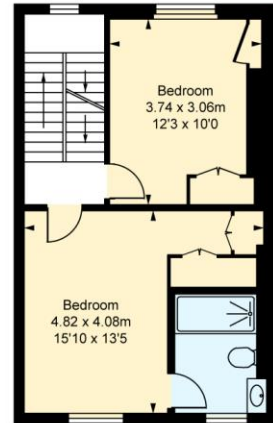
Raised Ground Floor  
Approximate Gross Internal Area  
43.53 sq m / 469 sq ft



First Floor  
Approximate Gross Internal Area  
42.39 sq m / 456 sq ft



Third Floor  
Approximate Gross Internal Area  
38.11 sq m / 410 sq ft



Second Floor  
Approximate Gross Internal Area  
38.91 sq m / 419 sq ft

This plan is not to scale. It is for guidance and not for valuation purposes.  
All measurements and areas are approximate only, and have been prepared in accordance with the current edition of the RICS Code of Measuring Practice.  
© Fulham Performance

