



South Lodge

245 Knightsbridge, SW7

£9,750 per month
(£2,250 per week)

A stunning lateral apartment in this well located building with porter.

Having recently undergone a major refurbishment, this beautiful bespoke property is completed to a very high standard throughout. Entering into a generous lobby, you are greeted by beautiful glass French doors that open into a large open space that includes the kitchen, dining and sitting room in a lateral space with a view into the green trees of Knightsbridge. There are three double bedrooms, a family bathroom and a delightful master suite with beautiful bathroom. The master bedroom further benefits from a private balcony.



South Lodge

245 Knightsbridge, SW7

- Recently renovated
- Bright
- Wooden floors
- Private parking
- Modern
- Park views



South Lodge is incredibly well located on the Knightsbridge fringe of Hyde Park. Close to local amenities. The property also has a private parking space.

Minimum Term: 12 months
Deposit Required: £13,500.00
Local Authority: City Of Westminster
Council Tax Band: H
EPC Rating: C
Unfurnished

Energy Efficiency Rating		Current	Potential
Very energy efficient - lower running costs			
(92-100)	A		
(81-91)	B		
(69-80)	C	79	85
(55-68)	D		
(39-54)	E		
(21-38)	F		
(1-20)	G		
Not energy efficient - higher running costs			
England, Scotland & Wales		EU Directive 2002/91/EC	

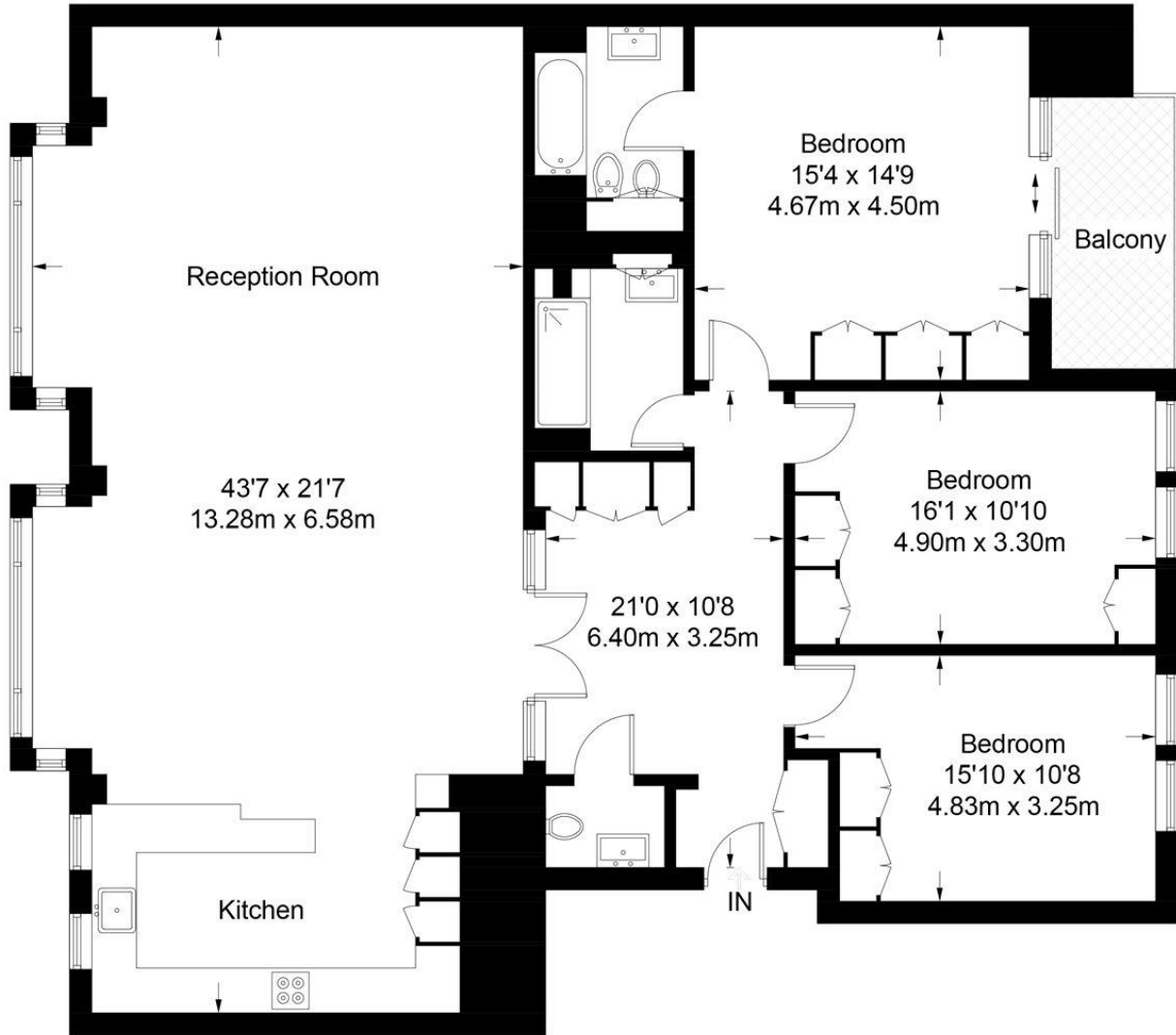
Chestertons Knightsbridge & Belgravia Lettings

31 Lowndes Street
London
SW1X 9HX
knightsbridge@chestertons.co.uk
02072353530
chestertons.co.uk

Additional tenant charges apply (fees apply to non-AST tenancies only)
Tenancy Agreement Fee: £300
References per Tenant/Guarantor: £60
Inventory check (approx. £100 – £250 inc. VAT)
chestertons.co.uk/property-to-rent/applicable-fees

South Lodge

Approximate Gross Internal Area = 1818 sq ft / 168.9 sq m



Third Floor

Not to scale, for guidance only and must not be relied upon as a statement of fact.
All measurements and areas are approximate only and have been prepared in accordance with the current edition of the RICS Code of Measuring Practice.

