



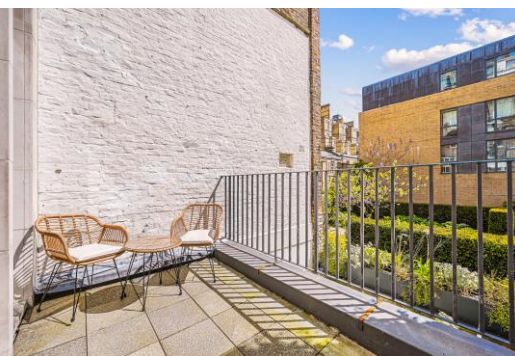
Halkin Street

London, SW1X

£11,500 per month
(£2,653.85 per week)

A stunning and meticulously refurbished duplex period apartment of circa 1,904 sq ft. Located in prime Belgravia, moments from Belgrave Square, Park Lane and Green Park. Features a private terrace and direct access to communal gardens.

CHESTERTONS



Halkin Street

London, SW1X

- Private terrace
- Direct access to communal gardens
- Three metre ceilings in the reception
- Duplex apartment
- Belgravia location moments from Hyde Park



A stunning and meticulously refurbished duplex period apartment of circa 2,040 sq ft. Located in prime Belgravia, moments from Belgrave Square, Park Lane and Green Park. The property composes part of a substantial period building and offers features that include three-metre ceilings in the main reception, private terrace and direct access to communal gardens.

As you enter the apartment, you will immediately notice the high quality finish and exceptional design present throughout the property.

The accommodation includes a spectacular double reception/dining room, separate modern kitchen, two double bedrooms with en suite bathrooms and a third single bedroom/study.

Minimum Term: 12 months
Deposit Required: £15,923.08
Local Authority: Westminster
Council Tax Band: G
EPC Rating: D
Furnished

Energy Efficiency Rating		
	Current	Potential
Very energy efficient - lower running costs		
(92-100) A		
(81-91) B		
(69-80) C		
(55-68) D	64	75
(39-54) E		
(21-38) F		
(1-20) G		
Not energy efficient - higher running costs		
England, Scotland & Wales		EU Directive 2002/91/EC

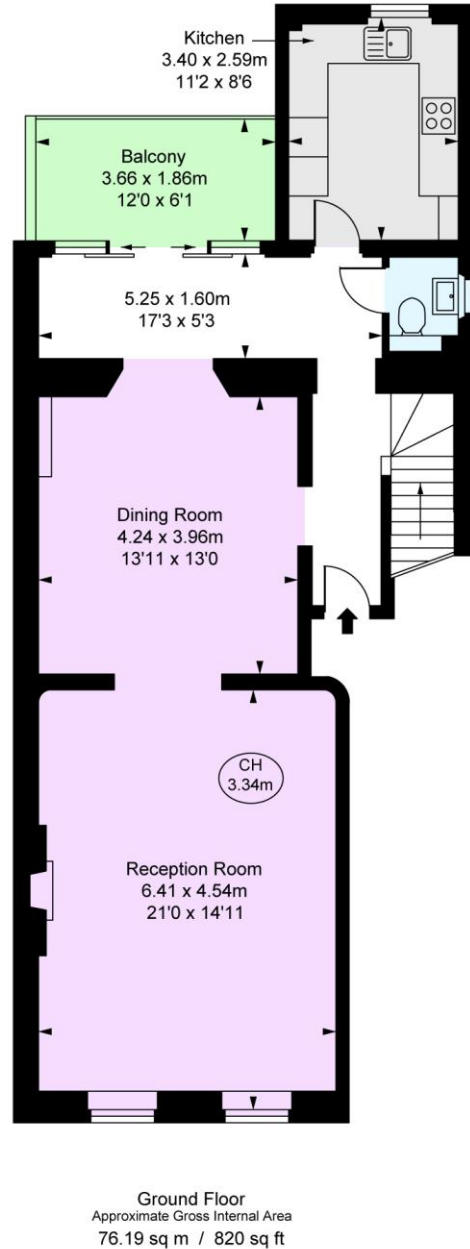
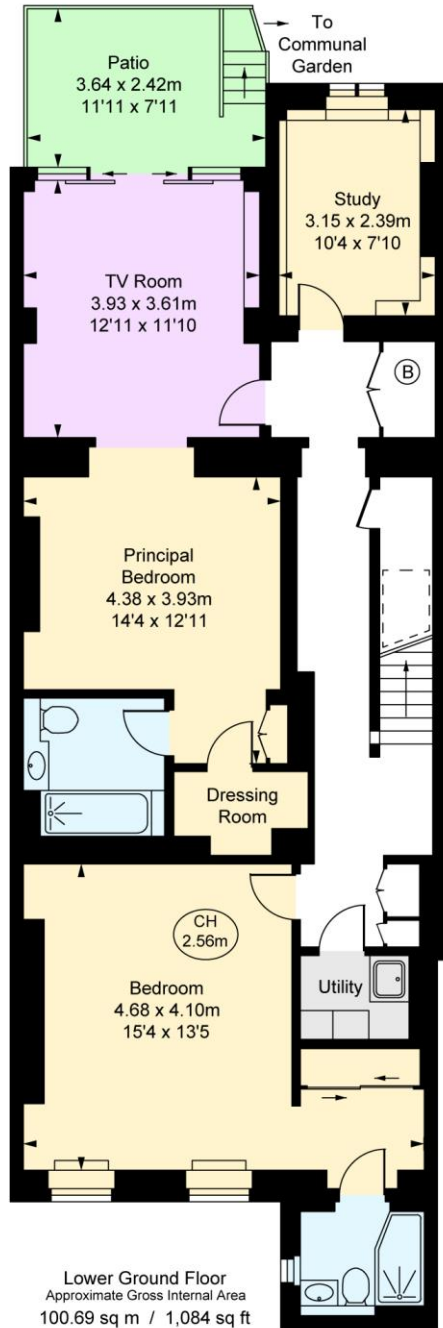
Chestertons Knightsbridge & Belgravia Lettings

31 Lowndes Street
 London
 SW1X 9HX
knightsbridgelettingsusers@chestertons.co.uk
 02072353530
chestertons.co.uk

Additional tenant charges apply (fees apply to non-AST tenancies only)
 Tenancy Agreement Fee: £300
 References per Tenant/Guarantor: £60
 Inventory check (approx. £100 – £250 inc. VAT)
chestertons.co.uk/property-to-rent/applicable-fees

Halkin Street, SW1X
Approximate Gross Internal Area
176.88 sq m / 1,904 sq ft

(Including restricted height
under 1.5m [= = = =])
(CH = Ceiling Heights)



This plan is not to scale. It is for guidance and not for valuation purposes.
All measurements and areas are approximate only, and have been prepared in accordance with the current edition of the RICS Code of Measuring Practice.
© Fulham Performance

