



Halkin Street

London, SW1X

£13,628.33 per month
(£3,145 per week)

A stunning and meticulously refurbished duplex period apartment of circa 2,040 sq ft. Located in prime Belgravia, moments from Belgrave Square, Park Lane and Green Park. The property composes part of a substantial period building and offers features that include three-metre ceilings in the main reception, private terrace and direct access to communal gardens.

As you enter the apartment, you will immediately notice the high quality finish and exceptional design present throughout the property.

The accommodation includes a spectacular double reception/dining room, separate modern kitchen, two double bedrooms with en suite bathrooms and a third single bedroom/study.

CHESTERTONS



Halkin Street

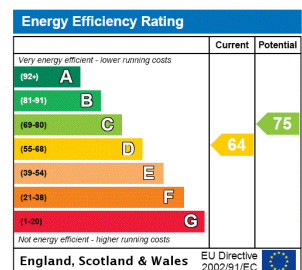
London, SW1X

- Private terrace
- Direct access to communal gardens
- Three metre ceilings in the reception
- Duplex apartment
- Belgravia location moments from Hyde Park



‘A stunning and meticulously refurbished duplex period apartment of circa 2,040 sq ft. Located in prime Belgravia, moments from Belgrave Square, Park Lane and Green Park.’

Minimum Term: 12 months
Deposit Required: £18,870.00
Local Authority: City of Westminster
Council Tax Band: G
EPC Rating: D
Furnished



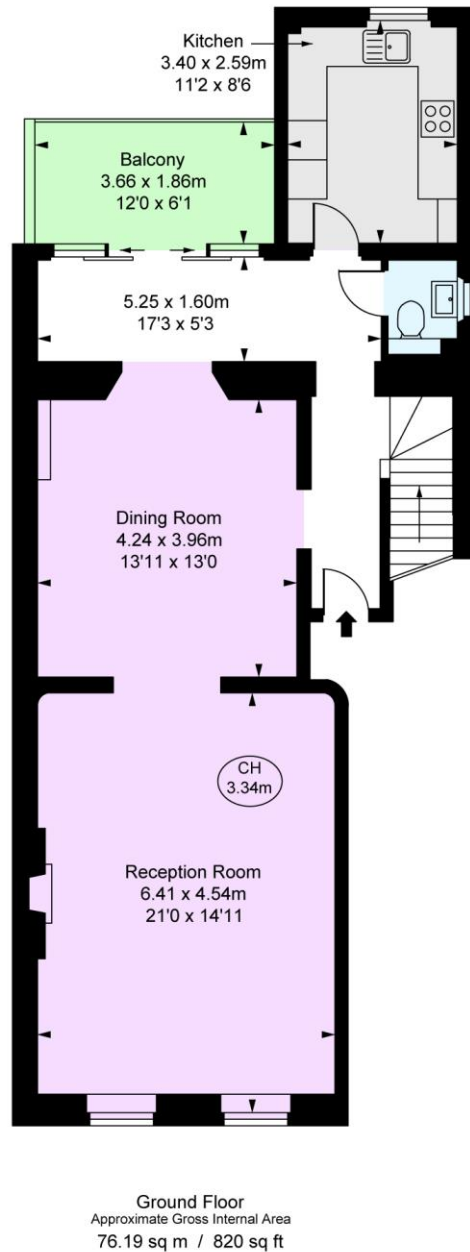
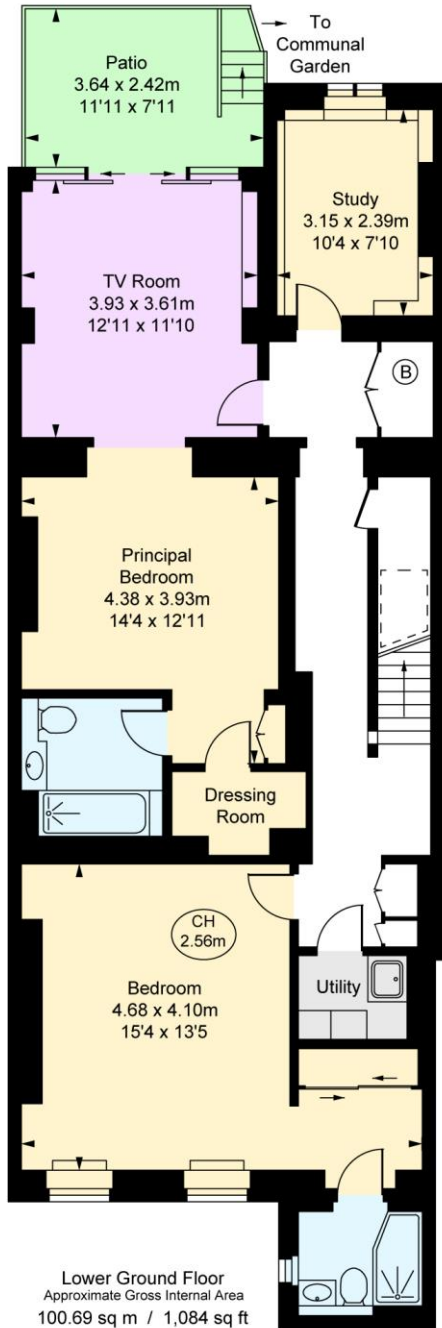
Chestertons Knightsbridge & Belgravia Lettings

31 Lowndes Street
 London
 SW1X 9HX
 knightsbridge@chestertons.co.uk
 02072353530
 chestertons.co.uk

Additional tenant charges apply (fees apply to non-AST tenancies only)
 Tenancy Agreement Fee: £300
 References per Tenant/Guarantor: £60
 Inventory check (approx. £100 – £250 inc. VAT)
chestertons.co.uk/property-to-rent/applicable-fees

Halkin Street, SW1X
 Approximate Gross Internal Area
 176.88 sq m / 1,904 sq ft

(Including restricted height
 under 1.5m [= = = =])
 (CH = Ceiling Heights)



This plan is not to scale. It is for guidance and not for valuation purposes.
 All measurements and areas are approximate only, and have been prepared in accordance with the current edition of the RICS Code of Measuring Practice.
 © Fulham Performance

Chesterton Global Ltd trading as Chestertons for themselves and for the vendor of this property whose agents they are, give notice that (i) these particulars do not constitute any part of an offer or contract, (ii) all statements contained within these particulars are made without responsibility on the part of Chestertons or the vendor, (iii) whilst made in good faith, none of the statements contained within these particulars are to be relied upon as a statement or representation of fact, (iv) any intending purchasers must satisfy themselves by inspection or otherwise as to the correctness of each of the statements contained within these particulars, (v) the vendor does not make or give either Chestertons or any person in their employment any authority to make or give representation or warranty whatsoever in relation to this property. Wide angle lenses may be used. ©Copyright Chestertons | Chesterton Global Ltd | Registered Office 40 Connaught Street, Hyde Park, London W2 2AB Registered Company Number 05334580.



This paper is
 100% recyclable