



Cadogan Lane

London, SW1X

£11,483.33 per month
(£2,650 per week)

Immaculately presented mews house which has been completely renovated throughout whilst retaining the charm of the original façade. The house has been meticulously finished throughout and features a private garage, garden and ample storage.

The property offers a private garage and three floors of generous living space, comprising of a ground floor formal reception room leading onto a private garden and a separate kitchen. All bedrooms benefit from built in storage and natural light. Two bedrooms benefit from en suite bathrooms over the first and second floors.



Cadogan Lane

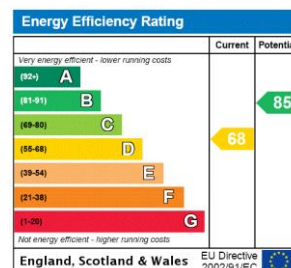
London, SW1X

- Private garden and terrace
- Prime Location
- Built in storage through out
- Air conditioning
- Wooden floors in reception
- Garage



Cadogan Lane is a quiet and charming street which is tucked away behind Cadogan Place and Sloane Street. Close to Hyde Park, the property is ideally situated for all the restaurants, bars and world class shops that Knightsbridge and Sloane Street have to offer, including Harrods and Harvey Nichols.

Minimum Term: 12 months
Deposit Required: £15,900.00
Local Authority: Royal Borough of Kensington & Chelsea
Council Tax Band: H
EPC Rating: D
Unfurnished



Chestertons Knightsbridge & Belgravia Lettings

31 Lowndes Street
 London
 SW1X 9HX
 knightsbridge@chestertons.co.uk
 02072353530
 chestertons.co.uk

Additional tenant charges apply (fees apply to non-AST tenancies only)
 Tenancy Agreement Fee: £300
 References per Tenant/Guarantor: £60
 Inventory check (approx. £100 – £250 inc. VAT)
chestertons.co.uk/property-to-rent/applicable-fees

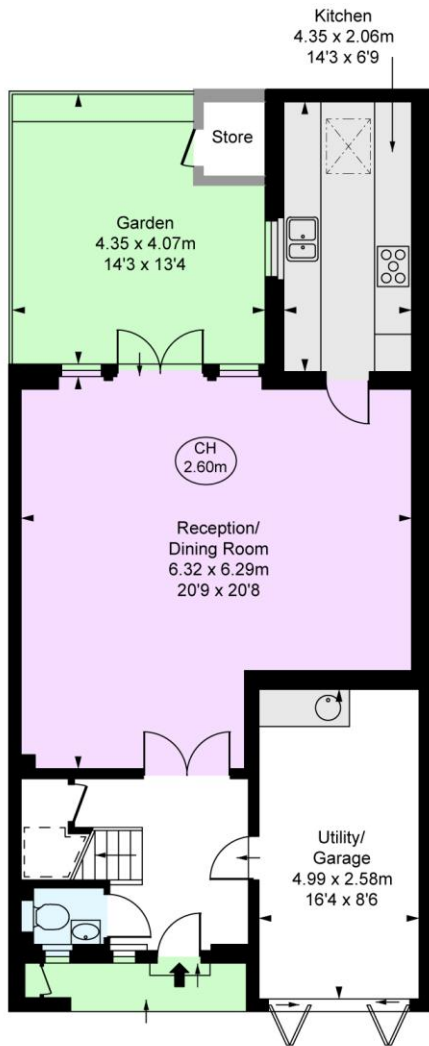
Cadogan Lane, SW1X

Approximate Gross Internal Area
 171.69 sq m / 1,848 sq ft
 Store
 1.20 sq m / 13 sq ft

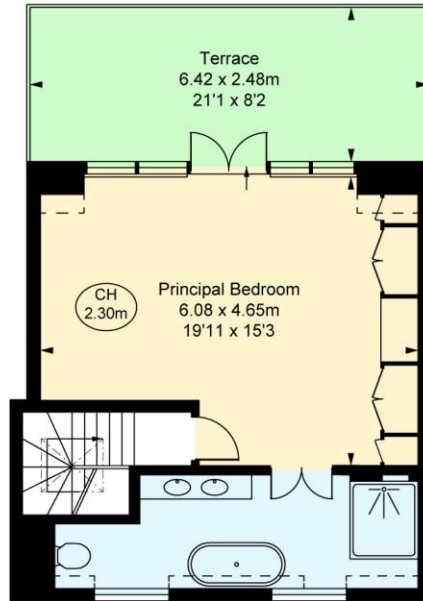
Total Areas Shown On Plan
 172.89 sq m / 1,861 sq ft

(Including restricted height under 1.5m [= = = =])

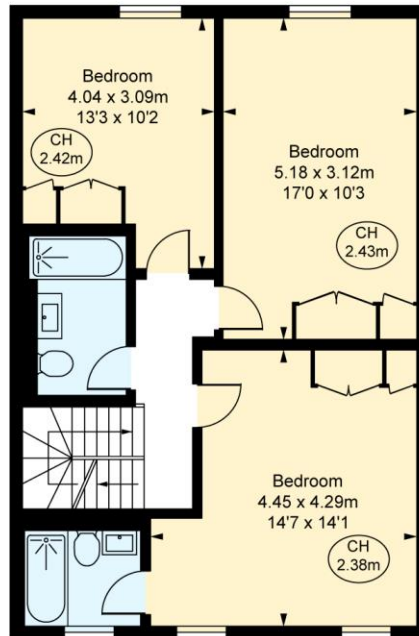
(CH = Ceiling Heights)



Ground Floor
 Approximate Gross Internal Area
 69.34 sq m / 746 sq ft



Second Floor
 Approximate Gross Internal Area
 40.12 sq m / 432 sq ft



First Floor
 Approximate Gross Internal Area
 62.23 sq m / 670 sq ft

This plan is not to scale. It is for guidance and not for valuation purposes.
 All measurements and areas are approximate only, and have been prepared in accordance with the current edition of the RICS Code of Measuring Practice.
 © Fulham Performance

Chesterton Global Ltd trading as Chestertons for themselves and for the vendor of this property whose agents they are, give notice that (i) these particulars do not constitute any part of an offer or contract, (ii) all statements contained within these particulars are made without responsibility on the part of Chestertons or the vendor, (iii) whilst made in good faith, none of the statements contained within these particulars are to be relied upon as a statement or representation of fact, (iv) any intending purchasers must satisfy themselves by inspection or otherwise as to the correctness of each of the statements contained within these particulars, (v) the vendor does not make or give either Chestertons or any person in their employment any authority to make or give representation or warranty whatsoever in relation to this property. Wide angle lenses may be used. ©Copyright Chestertons | Chesterton Global Ltd | Registered Office 40 Connaught Street, Hyde Park, London W2 2AB Registered Company Number 05334580.



This paper is
 100% recyclable