



# Lowndes Square

London, SW1X

£4,766.67 per month  
(£1,100 per week)

Impressive 1st floor apartment of circa 887 sq ft, which is part of a secure and well maintained building, with porter and lift access. The accommodation includes a large reception/dining room with wood flooring, modern kitchen and two bathrooms.



# Lowndes Square

London, SW1X

- Wooden floors
- Porter
- Lift access
- Garden square access



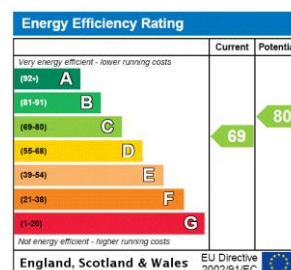


An impressive 1st floor apartment of circa 887 sq ft, which is part of a secure and well maintained building, with porter and lift access.

The accommodation includes a large reception/dining room with wood flooring, modern fully fitted kitchen, two double bedrooms and two bathrooms.

The property is perfectly located on one of London's most prestigious garden squares, moments from Sloane Street and Hyde Park.

**Minimum Term:** 12 months  
**Deposit Required:** £6,600.00  
**Local Authority:** Royal Borough of Kensington & Chelsea  
**Council Tax Band:** G  
**EPC Rating:** C  
**Furnished, Unfurnished**



### Chestertons Knightsbridge & Belgravia Lettings

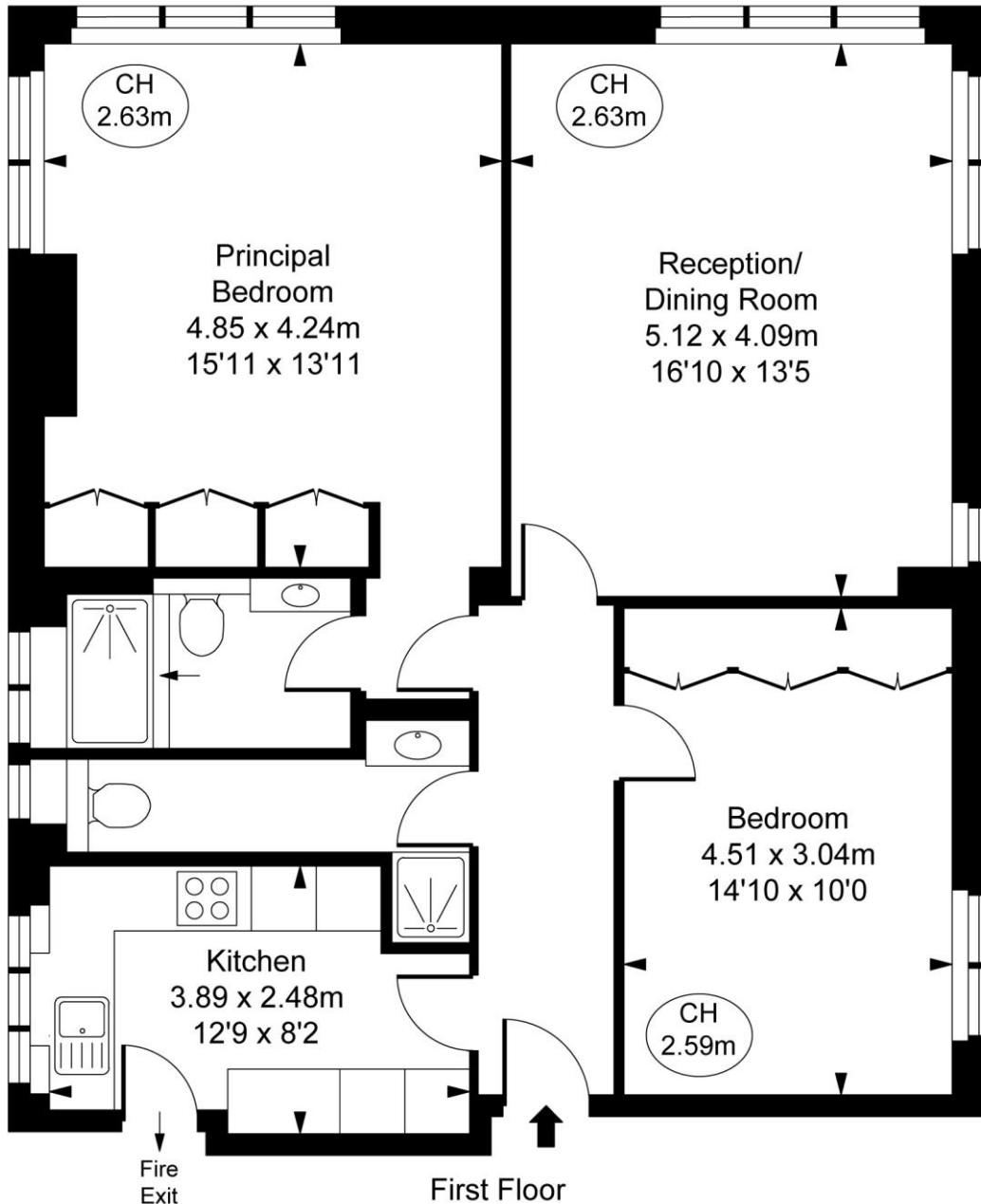
31 Lowndes Street  
 London  
 SW1X 9HX  
[knightsbridge@chestertons.co.uk](mailto:knightsbridge@chestertons.co.uk)  
 02072353530  
[chestertons.co.uk](http://chestertons.co.uk)

Additional tenant charges apply (fees apply to non-AST tenancies only)  
 Tenancy Agreement Fee: £300  
 References per Tenant/Guarantor: £60  
 Inventory check (approx. £100 – £250 inc. VAT)  
[chestertons.co.uk/property-to-rent/applicable-fees](http://chestertons.co.uk/property-to-rent/applicable-fees)

# Lowndes Square, SW1X

Approximate Gross Internal Area  
82.41 sq m / 887 sq ft

( CH = Ceiling Heights )



This plan is not to scale. It is for guidance and not for valuation purposes.  
All measurements and areas are approximate only, and have been prepared in accordance with the current edition of the RICS Code of Measuring Practice.  
© Fulham Performance

