



Bourne Street

London, SW1W

£12,000 per month
(£2,769.23 per week)

Charming period town house of circa 1,549 sq ft. located moments from Sloane Square. The accommodation consists of a spacious reception room, fully fitted kitchen, guest W/C, three double bedrooms and two bathrooms.



Bourne Street

London, SW1W

- Roof terrace
- Air conditioning
- Fully furnished
- Separate dining area
- Private garden
- Built in storage through out the house

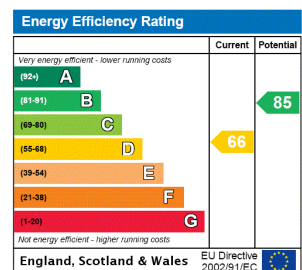


A beautiful white stucco fronted family house, recently refurbished throughout. The house benefits from three double bedrooms, two bathrooms, dining area, large reception, utility room, garden and terrace.

Decorated in neutral tones throughout, the property includes a spacious double reception, large kitchen/dining room, master bedroom with en-suite bathroom, two further double bedrooms and two bathrooms. There is also an guest W/C and utility room.

Bourne Street is moments away from Elizabeth Street with its village atmosphere, boutique shops and fine restaurants. Sloane Square

Minimum Term: 12 months
Deposit Required: £16,615.38
Local Authority: City of Westminster
Council Tax Band: H
EPC Rating: D
Furnished



Chestertons Knightsbridge & Belgravia Lettings

31 Lowndes Street
 London
 SW1X 9HX
 knightsbridge@chestertons.co.uk
 02072353530
 chestertons.co.uk

Additional tenant charges apply (fees apply to non-AST tenancies only)
 Tenancy Agreement Fee: £300
 References per Tenant/Guarantor: £60
 Inventory check (approx. £100 – £250 inc. VAT)
 chestertons.co.uk/property-to-rent/applicable-fees

Bourne Street, SW1W

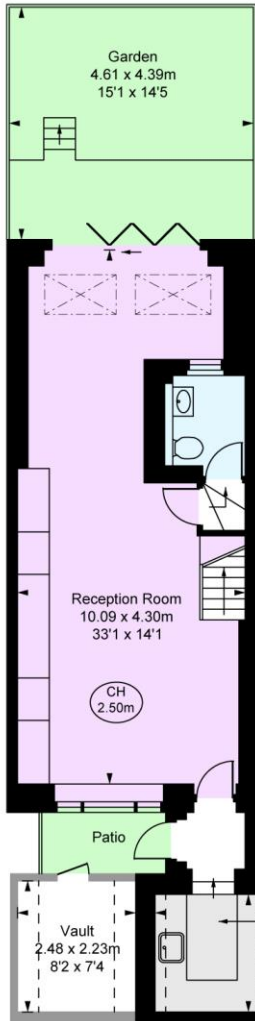
■ Approximate Gross Internal Area
138.35 sq m / 1,489 sq ft

■ Vault
5.53 sq m / 60 sq ft

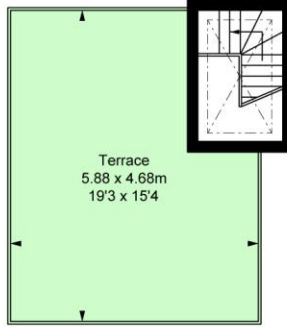
Total Areas Shown On Plan
143.88 sq m / 1,549 sq ft

(Including restricted height
under 1.5m □ □ □ □ □)

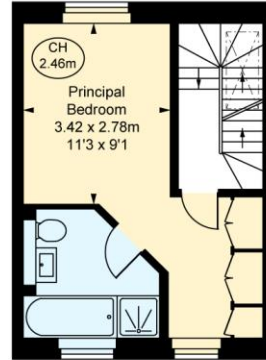
(CH = Ceiling Heights)



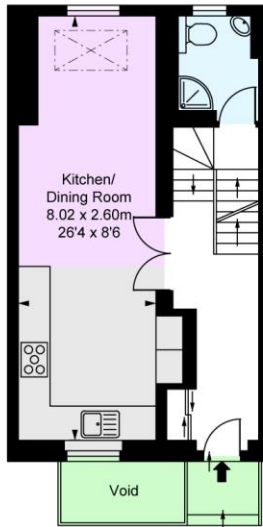
Lower Ground Floor
Approximate Gross Internal Area
48.42 sq m / 521 sq ft



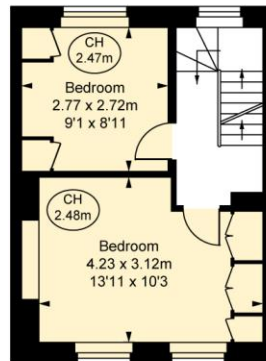
Third Floor



Second Floor
Approximate Gross Internal Area
26.95 sq m / 290 sq ft



Raised Ground Floor
Approximate Gross Internal Area
35.85 sq m / 386 sq ft



First Floor
Approximate Gross Internal Area
27.13 sq m / 292 sq ft

This plan is not to scale. It is for guidance and not for valuation purposes.
All measurements and areas are approximate only, and have been prepared in accordance with the current edition of the RICS Code of Measuring Practice.
© Fulham Performance

Chesterton Global Ltd trading as Chestertons for themselves and for the vendor of this property whose agents they are, give notice that (i) these particulars do not constitute any part of an offer or contract, (ii) all statements contained within these particulars are made without responsibility on the part of Chestertons or the vendor, (iii) whilst made in good faith, none of the statements contained within these particulars are to be relied upon as a statement or representation of fact, (iv) any intending purchasers must satisfy themselves by inspection or otherwise as to the correctness of each of the statements contained within these particulars, (v) the vendor does not make or give either Chestertons or any person in their employment any authority to make or give representation or warranty whatsoever in relation to this property. Wide angle lenses may be used. ©Copyright Chestertons | Chesterton Global Ltd | Registered Office 40 Connaught Street, Hyde Park, London W2 2AB Registered Company Number 05334580.

