



Egerton Gardens

London, SW3

£7,000 per month
(£1,615.38 per week)

Impressive raised ground floor apartment forming part of a beautiful period red brick conversion. The accommodation includes three double bedrooms, two bathrooms and a modern kitchen.



Egerton Gardens

London, SW3

- Private patio
- Split level
- Newly refurbished
- Wooden floors
- High ceilings
- Open plan kitchen/living area



An impressive raised ground floor apartment with its own street entrance, forming part of a beautiful period red brick conversion. The apartment is circa 1,495 sq ft and offers accommodation that includes three double bedrooms with built-in storage, large reception/dining room, two bathrooms and a modern kitchen.

Egerton Gardens is located in the heart of Knightsbridge and is close to the amenities and facilities of Brompton Cross and the world famous Harrods.

Minimum Term: 12 months
Deposit Required: £9,692.31
Local Authority: Kensington and Chelsea
Council Tax Band: H
EPC Rating: C
Furnished

Energy Efficiency Rating		
	Current	Potential
Very energy efficient - lower running costs		
A (92-100)		
B (81-91)		
C (69-80)	76	82
D (55-68)		
E (39-54)		
F (21-38)		
G (1-20)		
Not energy efficient - higher running costs		
England, Scotland & Wales EU Directive 2002/91/EC		

Chestertons Knightsbridge & Belgravia Lettings

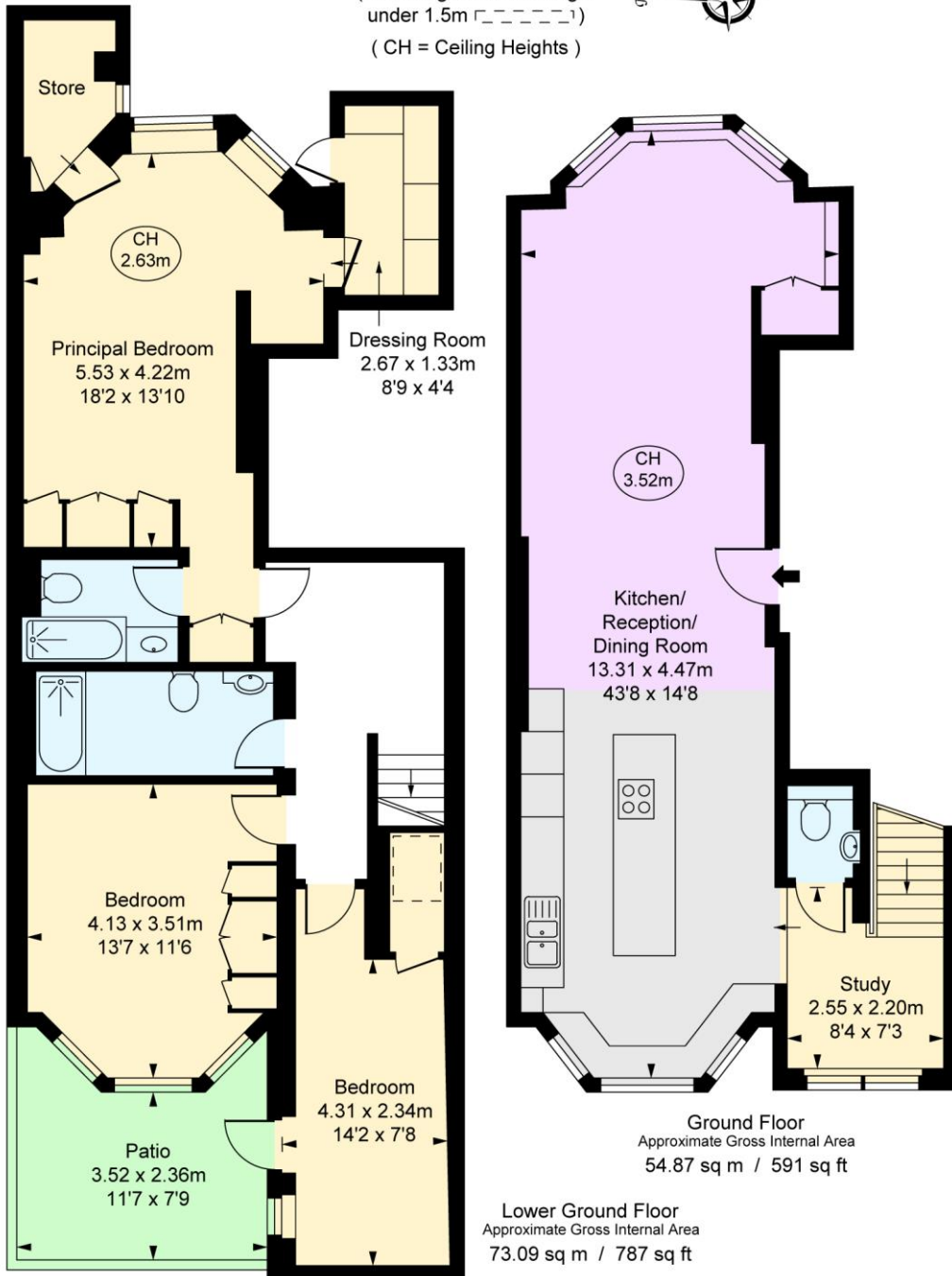
31 Lowndes Street
 London
 SW1X 9HX
knightsbridglettingsusers@chestertons.co.uk
 02072353530
chestertons.co.uk

Additional tenant charges apply (fees apply to non-AST tenancies only)
 Tenancy Agreement Fee: £300
 References per Tenant/Guarantor: £60
 Inventory check (approx. £100 – £250 inc. VAT)
chestertons.co.uk/property-to-rent/applicable-fees

Egerton Gardens, SW3
Approximate Gross Internal Area
127.96 sq m / 1,377 sq ft

(Including restricted height
under 1.5m )

(CH = Ceiling Heights)



This plan is not to scale. It is for guidance and not for valuation purposes.
All measurements and areas are approximate only, and have been prepared in accordance with the current edition of the RICS Code of Measuring Practice.
© Fulham Performance

