



Cadogan Lane

London, SW1X

£8,645 per month
(£1,995 per week)

An immaculately presented mews house, completely renovated throughout whilst retaining the charm of the original façade. The house has been meticulously finished and is perfectly situated in the heart of Knightsbridge, moments from Sloane Street and Hyde Park.

The property offers four floors of generous living space, comprising of a spacious reception room with wood flooring and stunning separate kitchen/dining room. All three bedrooms benefit from en suite bathrooms and fitted wardrobes and are situated over the 1st and 2nd floors. Property presented unfurnished.



Cadogan Lane

London, SW1X

- Stunning mews house
- Wood flooring
- Three bathrooms
- Guest WC



Cadogan Lane is a quiet and charming street which is tucked away behind Cadogan Place and Sloane Street. Close to Hyde Park, the property is ideally situated for all the restaurants, bars and world class shops that Knightsbridge and Sloane Street have to offer, including Harrods and Harvey Nichols.

Minimum Term: 12 months
Deposit Required: £11,970.00
Local Authority: Royal Borough of Kensington & Chelsea
Council Tax Band: H
EPC Rating: C
Unfurnished

Energy Efficiency Rating		
	Current	Potential
Very energy efficient - lower running costs		
A (92-100)		
B (81-91)		88
C (69-80)	80	
D (55-68)		
E (39-54)		
F (21-38)		
G (1-20)		
Not energy efficient - higher running costs		
England, Scotland & Wales EU Directive 2002/91/EC		

Chestertons Knightsbridge & Belgravia Lettings

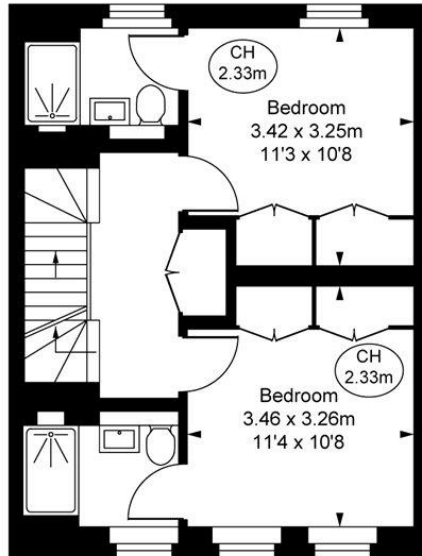
31 Lowndes Street
 London
 SW1X 9HX
knightsbridge@chestertons.co.uk
 02072353530
chestertons.co.uk

Additional tenant charges apply (fees apply to non-AST tenancies only)
 Tenancy Agreement Fee: £300
 References per Tenant/Guarantor: £60
 Inventory check (approx. £100 – £250 inc. VAT)
chestertons.co.uk/property-to-rent/applicable-fees

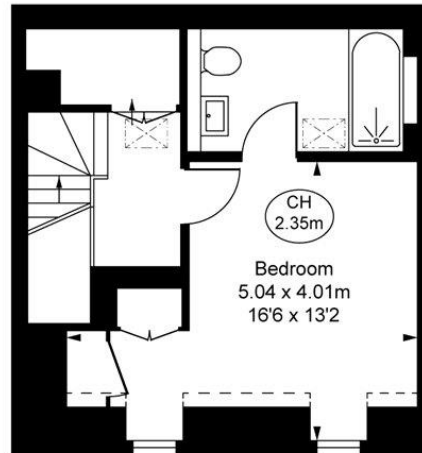
Cadogan Lane,
Knightsbridge, SW1X
Approximate Gross Internal Area
147.12 sq m / 1,584 sq ft

(Including restricted height
under 1.5m [- - - -])

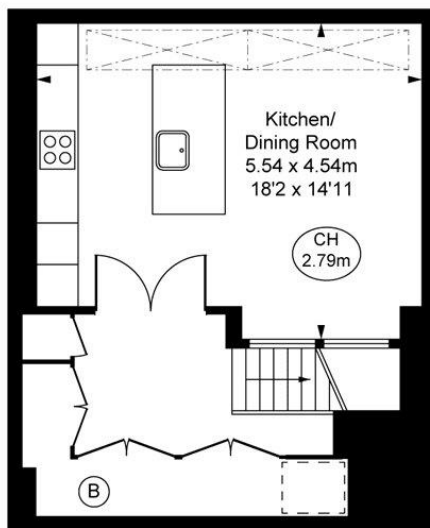
(CH = Ceiling Heights)



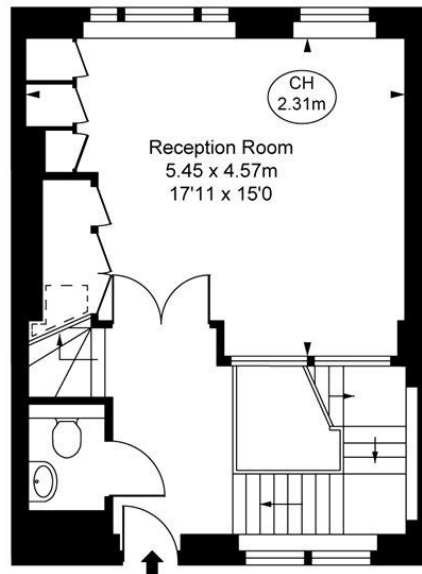
First Floor
Approximate Gross Internal Area
40.15 sq m / 432 sq ft



Second Floor
Approximate Gross Internal Area
31.28 sq m / 337 sq ft



Lower Ground Floor
Approximate Gross Internal Area
36.93 sq m / 408 sq ft



Ground Floor
Approximate Gross Internal Area
38.76 sq m / 417 sq ft

This plan is not to scale. It is for guidance and not for valuation purposes.
All measurements and areas are approximate only, and have been prepared in accordance with the current edition of the RICS Code of Measuring Practice.
© Fulham Performance

