



Wellington Court

116 Knightsbridge, SW1X

£12,000 per month
(£2,769.23 per week)

Truly exceptional duplex apartment overlooking Hyde Park, with features that include porter and lift access. The apartment is arranged over an estimated 2,606 sq ft and features generously proportioned rooms, high ceilings, porter and lift access.



Wellington Court

116 Knightsbridge, SW1X

- Overlooking Hyde Park
- Porter
- Lift access
- Large rooms and high ceilings
- Circa 2,606 square foot

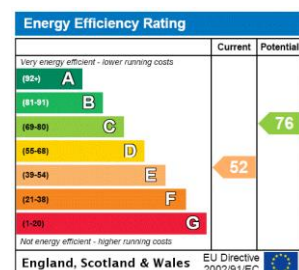


A truly exceptional duplex apartment overlooking Hyde Park, with feature that include porter and lift access. The apartment is arranged over an estimated 2,606 square feet and features generously proportioned rooms, high ceilings, porter and lift access.

This elegant and highly desirable property is presented in good order throughout and includes an impressive reception and separate dining room, three bathrooms and a fully fitted kitchen.

Wellington Court is situated opposite Hyde Park, perfectly located for access to the world renowned restaurants and shopping experience available on Sloane Street and Harrods.

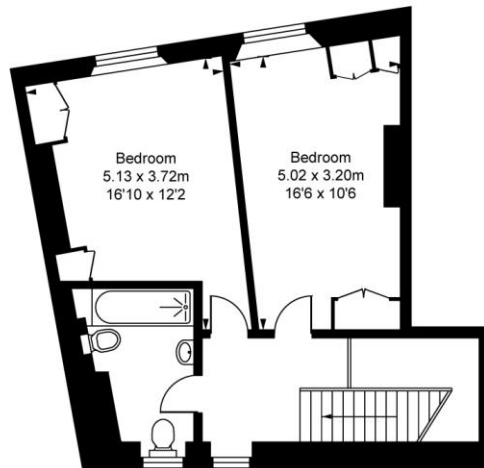
Minimum Term: 12 months
Deposit Required: £16,615.38
Local Authority: City of Westminster
Council Tax Band: H
EPC Rating: E
Furnished



Chestertons Knightsbridge & Belgravia Lettings

31 Lowndes Street
 London
 SW1X 9HX
 knightsbridge@chestertons.co.uk
 02072353530
 chestertons.co.uk

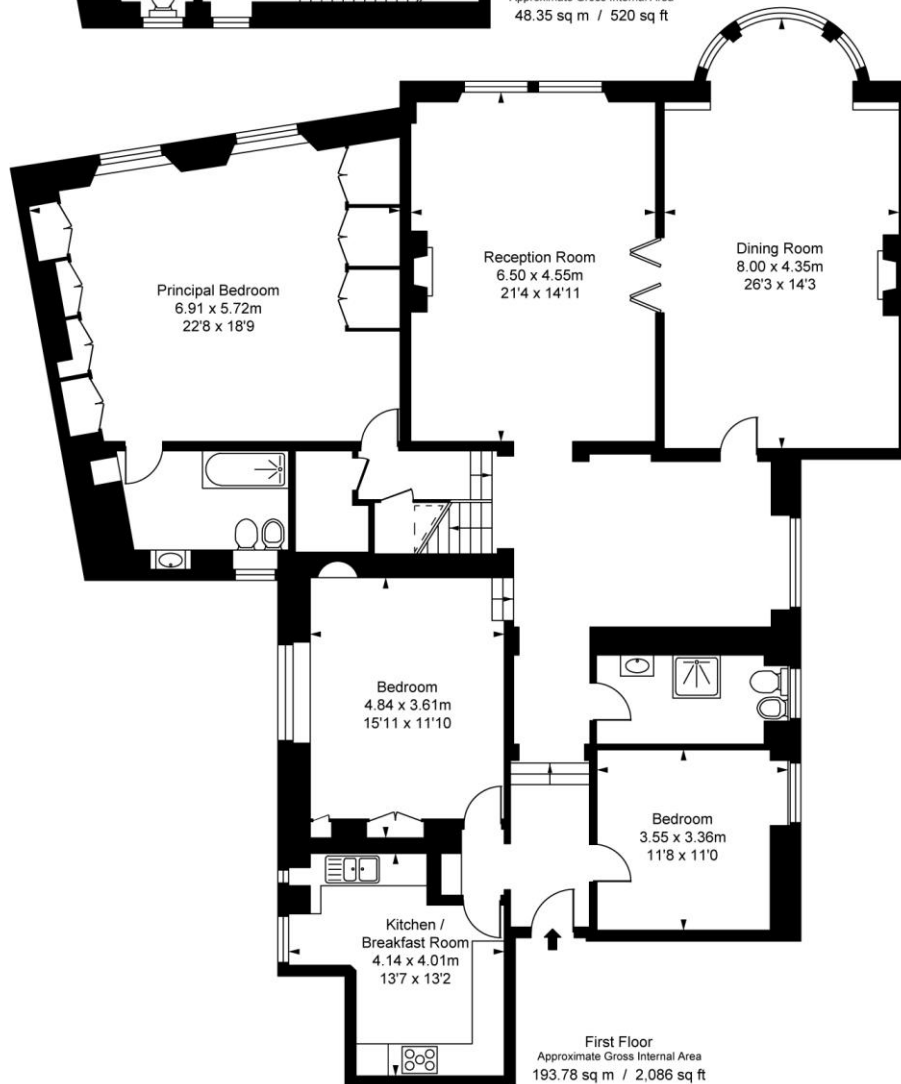
Additional tenant charges apply (fees apply to non-AST tenancies only)
 Tenancy Agreement Fee: £300
 References per Tenant/Guarantor: £60
 Inventory check (approx. £100 – £250 inc. VAT)
 chestertons.co.uk/property-to-rent/applicable-fees



Wellington Court, SW1X
Approximate Gross Internal Area
242.13 sq m / 2,606 sq ft
(Including restricted height
under 1.5m □ □ □ □ □)



Second Floor
Approximate Gross Internal Area
48.35 sq m / 520 sq ft



First Floor
Approximate Gross Internal Area
193.78 sq m / 2,086 sq ft

This plan is not to scale. It is for guidance and not for valuation purposes.
All measurements and areas are approximate only, and have been prepared in accordance with the current edition of the RICS Code of Measuring Practice.
© Fulham Performance

