



Montpelier Square

Knightsbridge, SW7

£25,566.67 per month
(£5,900 per week)

SHORT LET | An impeccably designed townhouse, situated on the northern terrace of this prestigious garden square in the heart of Knightsbridge. Features include a lift, private terrace, two receptions and six bedrooms.

CHESTERTONS



Montpelier Square

Knightsbridge, SW7

- Impeccable design
- Lift
- Conservatory
- Terrace
- Six bedrooms
- Five bathrooms
- Premier Knightsbridge garden square



An impeccably designed townhouse, situated on the northern terrace of this prestigious garden square in the heart of Knightsbridge.

The house has been designed and finished to an exceptionally high standard and features a wonderful southerly aspect over the garden square, to which residents have access. The accommodation is arranged over six floors with lift and includes two receptions, conservatory, modern kitchen/breakfast room, dining room, six bedrooms, five bathrooms and a private terrace.

Montpelier Square is one of Knightsbridge's premier garden squares and is conveniently located between Brompton Road and Hyde Park and within a short walking distance of Harrods and the many world-renowned shops of Knightsbridge.

Minimum Term: 1 months
Deposit Required: £35,400.00
Local Authority: City of Westminster
Council Tax Band: H
EPC Rating: D
Furnished, Unfurnished

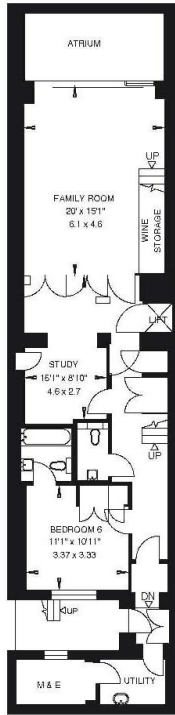
Chestertons Knightsbridge & Belgravia Lettings

31 Lowndes Street
London
SW1X 9HX
knightsbridglettingsusers@chestertons.co.uk
02072353530
chestertons.co.uk

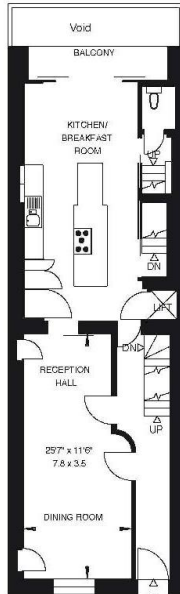
Additional tenant charges apply (fees apply to non-AST tenancies only)
Tenancy Agreement Fee: £300
References per Tenant/Guarantor: £60
Inventory check (approx. £100 – £250 inc. VAT)
chestertons.co.uk/property-to-rent/applicable-fees

36 MONTPELIER SQUARE
KNIGHTSBRIDGE SW7

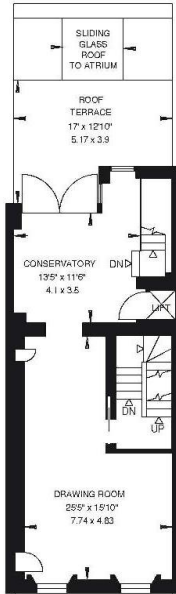
Gross Internal Area = 395 sq. metres
4247 sq. feet
Roof Terrace Area = 18 sq. metres
196 sq. feet



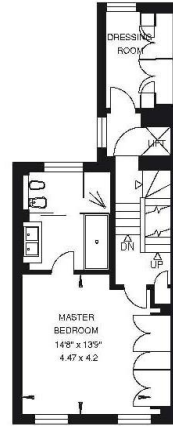
LOWER GROUND FLOOR



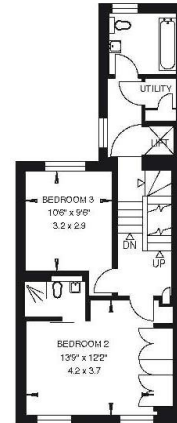
GROUND FLOOR



FIRST FLOOR



SECOND FLOOR



THIRD FLOOR



FOURTH FLOOR

