



THE CLOISTER

Belmont Street, Chalk Farm

£2,850,000



The Cloister

106 Great Portland Street, London, W1W 6PF
T. +44 (0)20 7436 6210 F. +44 (0)20 7436 7261
E. lettings@thecloisteruk.com W. www.thecloisteruk.com



Belmont Street, Chalk Farm

£2,850,000

Set over five floors, the stunning development of Chappell Lofts boasts over 3,000 Square Foot of space exquisitely located in the heart of Camden.

The property offers four double bedrooms all with air conditioning, underfloor heating and all with ensembles, three enormous reception areas, as well as outside space, consisting of a private terrace and patio. In addition the entire top floor is available as either extra reception space or a master suite with ensuite opportunity and two balconies.

Belmont Street, in the heart of Chalk Farm and Camden. Chappell lofts is located at the centre North West London's most vibrant districts, with Primrose Hill Village and the serenity of Regent's Park on your doorstep.

The Cloister

106 Great Portland Street, London, W1W 6PF
T. +44 (0)20 7436 6210 F. +44 (0)20 7436 7261
E. lettings@thecloisteruk.com W. www.thecloisteruk.com



Belmont Street, Chalk Farm

£2,850,000



The Cloister

106 Great Portland Street, London, W1W 6PF
T. +44 (0)20 7436 6210 F. +44 (0)20 7436 7261
E. lettings@thecloisteruk.com W. www.thecloisteruk.com



Belmont Street, Chalk Farm

£2,850,000

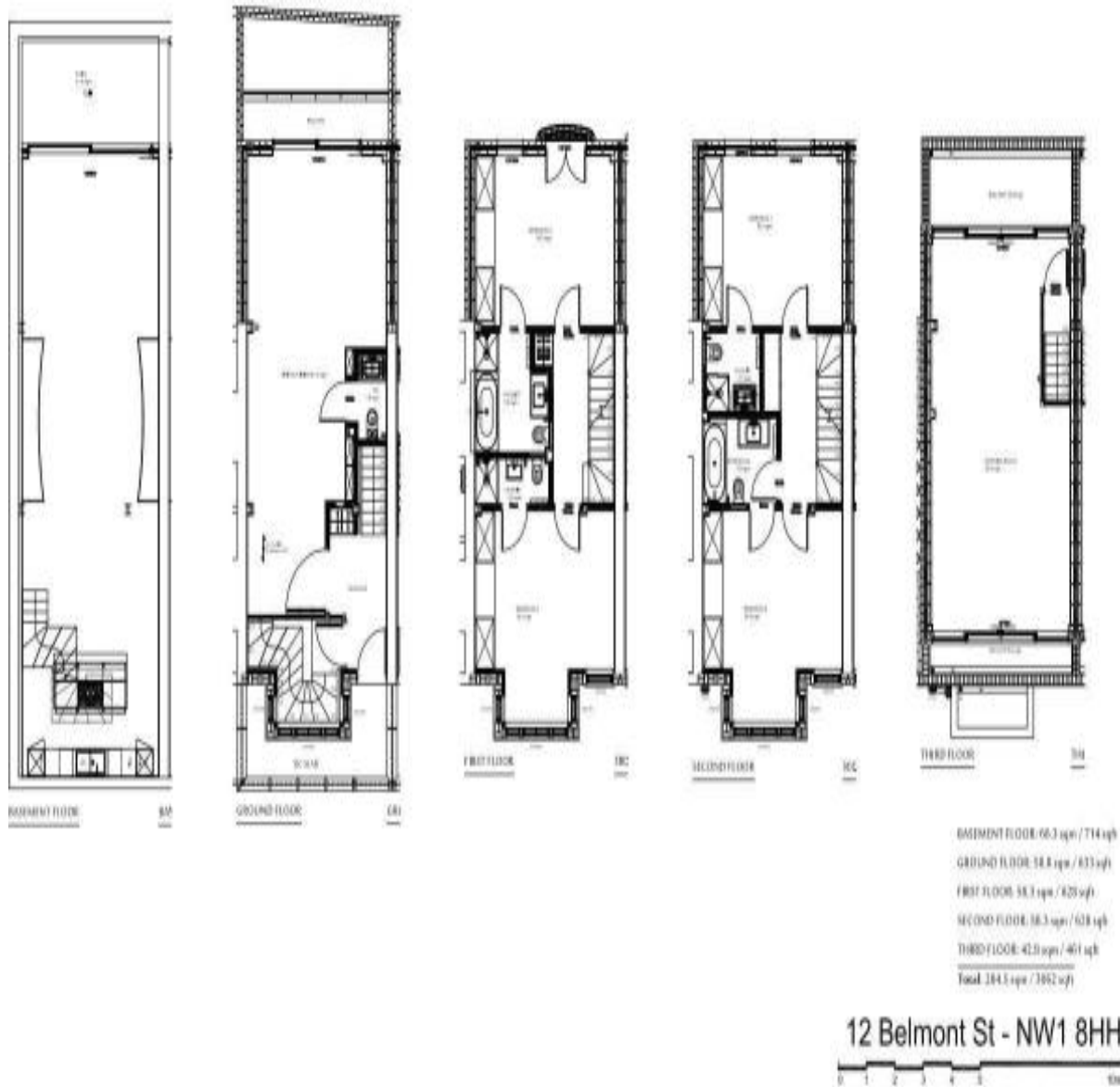
The Cloister

106 Great Portland Street, London, W1W 6PF
T. +44 (0)20 7436 6210 F. +44 (0)20 7436 7261
E. lettings@thecloisteruk.com W. www.thecloisteruk.com



Belmont Street, Chalk Farm

£2,850,000



Important Notices:

Particulars: These particulars are not an offer or contract, nor part of one. You should not rely on statements by The Cloister in the particulars or by word of mouth or in writing ("information") as being factually accurate about the property, its condition or its value. Neither The Cloister nor any joint agent has any authority to make any representations about the property, and accordingly any information given is entirely without responsibility on the part of the agents, seller(s), lessor(s) or landlord(s). Any areas, measurements or distances are approximate. The text, photographs and plans are for guidance only and are not necessarily comprehensive. Regulations etc: Any reference to alterations to, or use of, any part of the property does not mean that any necessary planning, building regulations or other consent has been obtained. A buyer, lessee or tenant must find out by inspection or in other ways that these matters have been properly dealt with and that all information is correct. All items usually known as tenant's fixtures and fittings whether mentioned or not in these particulars are excl

The Cloister

106 Great Portland Street, London, W1W 6PF
T. +44 (0)20 7436 6210 F. +44 (0)20 7436 7261
E. lettings@thecloisteruk.com W. www.thecloisteruk.com

