



# THE CLOISTER

One Kensington Gardens, Kensington

£5,650,000



## The Cloister

106 Great Portland Street, London, W1W 6PF

T. +44 (0)20 7436 6210 F. +44 (0)20 7436 7261

E. [info@thecloister.co.uk](mailto:info@thecloister.co.uk) W. [www.thecloister.co.uk](http://www.thecloister.co.uk)

Head Office, 64 Knightsbridge, London, SW1X 7JF



# One Kensington Gardens, Kensington

£5,650,000

A splendid two double bedroom, two bathroom third floor apartment with lift, 24 hour concierge and secure designated underground parking, situated within a prestigious new development in the heart of the Kensington. Share of freehold with a 999 year lease.

Fronted by an elegant period façade on De Vere Gardens and offering in excess of 1840 square feet of sumptuous living space, this luxurious apartment benefits from comfort cooling, hardwood flooring to the principal living rooms, underground storage room, and access to wonderful on-site well-being amenities with dedicated staffing including a 25 metre pool, gymnasium, sauna, steam room, and spa treatment rooms. A generous entrance hall with guest cloakroom and utility room off leads to the magnificent open-plan kitchen/dining/sitting room with superb Bulthaup kitchen, incorporating the option to screen off the kitchen from the living area. The generous master bedroom with en suite facilities has an excellent range of built in wardrobes whilst the second bedroom also boasts fine en suite facilities.

One Kensington Gardens is situated directly across the road from the glorious Kensington Palace Gardens. Amenities abound on nearby Kensington High Street with an eclectic array of restaurants, bars, coffee houses and broad range of diverse shopping facilities. High Street Kensington is the closest London Underground station (Circle and District lines) approximately 0.3 miles away.

---

## The Cloister

106 Great Portland Street, London, W1W 6PF  
T. +44 (0)20 7436 6210 F. +44 (0)20 7436 7261  
E. [info@thecloister.co.uk](mailto:info@thecloister.co.uk) W. [www.thecloister.co.uk](http://www.thecloister.co.uk)  
Head Office, 64 Knightsbridge, London, SW1X 7JF



# One Kensington Gardens, Kensington

£5,650,000



## The Cloister

106 Great Portland Street, London, W1W 6PF  
T. +44 (0)20 7436 6210 F. +44 (0)20 7436 7261  
E. [info@thecloister.co.uk](mailto:info@thecloister.co.uk) W. [www.thecloister.co.uk](http://www.thecloister.co.uk)  
Head Office, 64 Knightsbridge, London, SW1X 7JF





# One Kensington Gardens, Kensington

£5,650,000



## The Cloister

106 Great Portland Street, London, W1W 6PF  
T. +44 (0)20 7436 6210 F. +44 (0)20 7436 7261  
E. [info@thecloister.co.uk](mailto:info@thecloister.co.uk) W. [www.thecloister.co.uk](http://www.thecloister.co.uk)  
Head Office, 64 Knightsbridge, London, SW1X 7JF

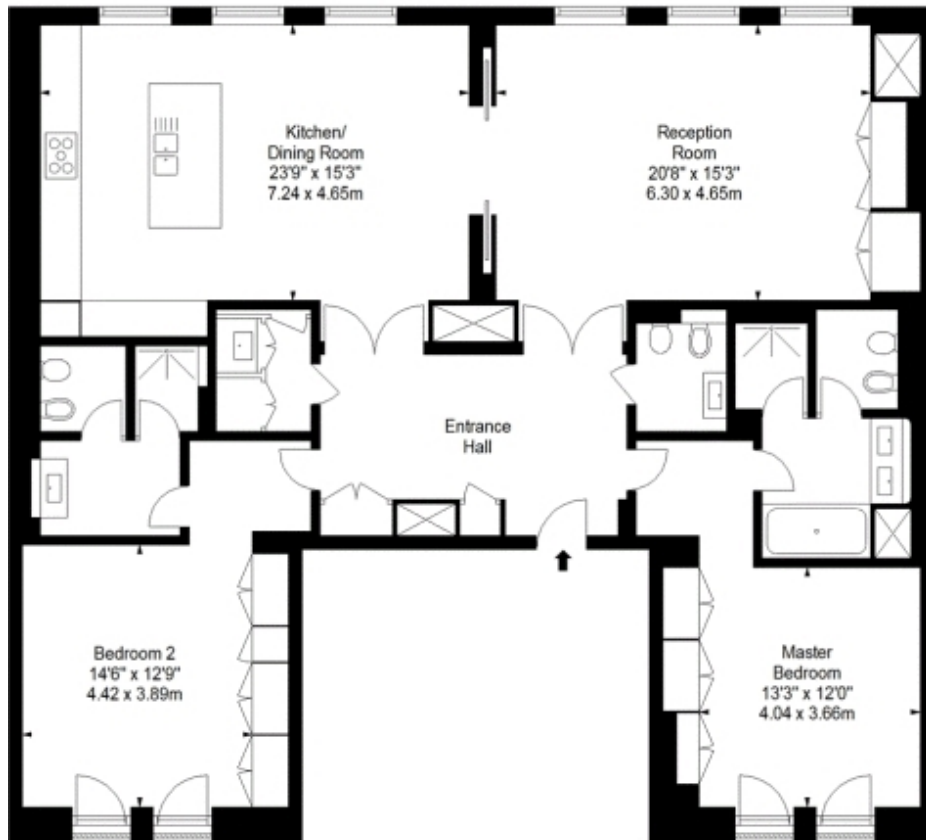


# One Kensington Gardens, Kensington

£5,650,000

## ONE KENSINGTON GARDENS, W8

Approx. Gross Internal Area \*  
1,844 Ft<sup>2</sup> - 171.31 M<sup>2</sup>



Third Floor

Illustration For Identification Purposes Only. Not to Scale  
\* As Defined by RICS - Code of Measuring Practice  
Copyright © BluePrint Floorplans Ltd. 2017  
info@blueprintfloorplans.co.uk

### Important Notices:

Particulars: These particulars are not an offer or contract, nor part of one. You should not rely on statements by The Cloister in the particulars or by word of mouth or in writing ("information") as being factually accurate about the property, its condition or its value. Neither The Cloister nor any joint agent has any authority to make any representations about the property, and accordingly any information given is entirely without responsibility on the part of the agents, seller(s), lessor(s) or landlord(s). Any areas, measurements or distances are approximate. The text, photographs and plans are for guidance only and are not necessarily comprehensive. Regulations etc: Any reference to alterations to, or use of, any part of the property does not mean that any necessary planning, building regulations or other consent has been obtained. A buyer, lessee or tenant must find out by inspection or in other ways that these matters have been properly dealt with and that all information is correct. All items usually known as tenant's fixtures and fittings whether mentioned or not in these particulars are...

### The Cloister

106 Great Portland Street, London, W1W 6PF  
T. +44 (0)20 7436 6210 F. +44 (0)20 7436 7261  
E. info@thecloister.co.uk W. www.thecloister.co.uk  
Head Office, 64 Knightsbridge, London, SW1X 7JF

