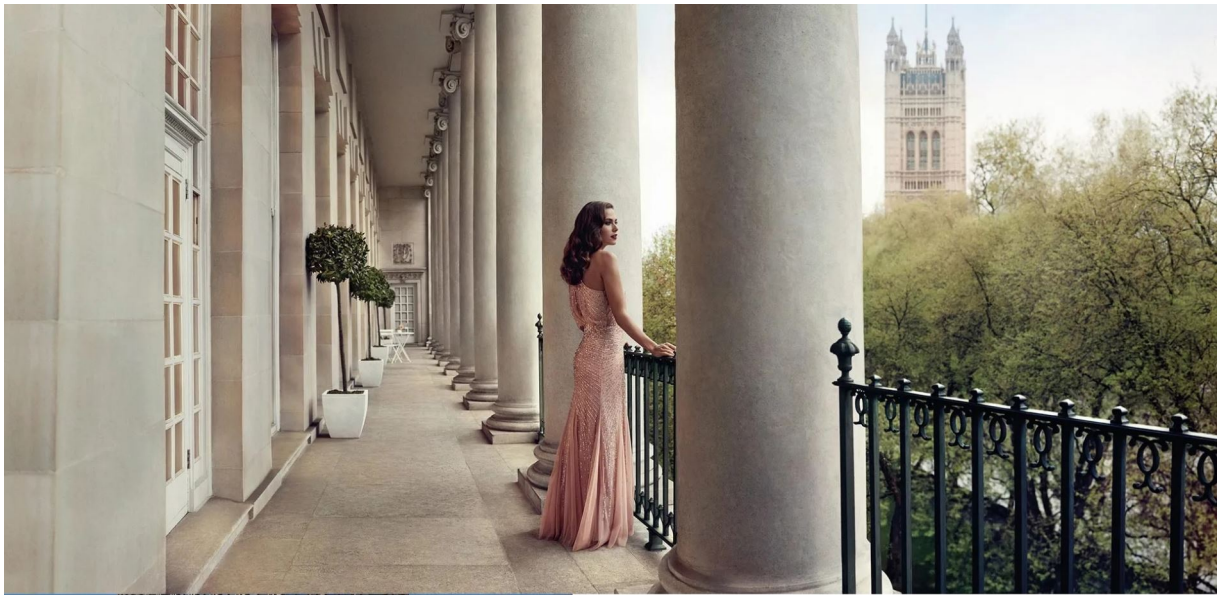




THE CLOISTER

9 Milbank, Westminster

£6,950,000



The Cloister

106 Great Portland Street, London, W1W 6PF
T. +44 (0)20 7436 6210 F. +44 (0)20 7436 7261
E. lettings@thecloisteruk.com W. www.thecloisteruk.com



9 Millbank, Westminster

£6,950,000

We are offering an exclusive opportunity to own a newly built premium three bedroom home in this prestigious location. Contact us to find out more.

The apartments of 9 Millbank present a unique opportunity to buy a piece of British luxury and style. This development is located in the City of Westminster, in the shadow of Big Ben and the Houses of Parliament, just fifteen minutes' walk from St James' Park.

9 Millbank is a prestigious new build and refurbishment of a Grade II listed riverside address with iconic and panoramic views over London's famous skyline. The homes boast luxurious leisure facilities, including a pool, spa, gym, and cinema, as well as a 24-hour concierge and a private courtyard garden.



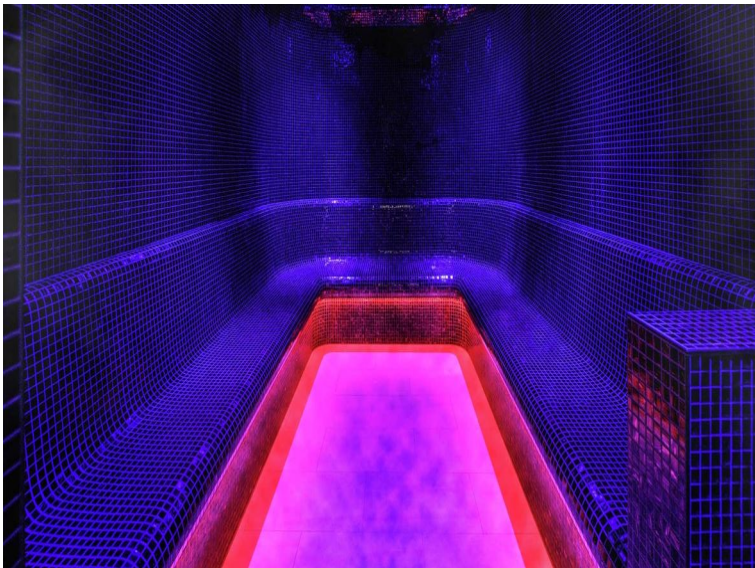
The Cloister

106 Great Portland Street, London, W1W 6PF
T. +44 (0)20 7436 6210 F. +44 (0)20 7436 7261
E. lettings@thecloisteruk.com W. www.thecloisteruk.com



9 Milbank, Westminster

£6,950,000



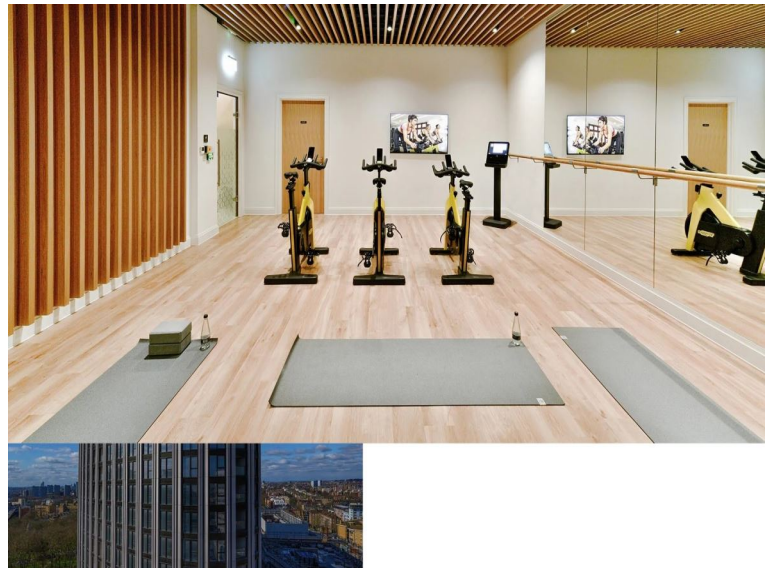
The Cloister

106 Great Portland Street, London, W1W 6PF
T. +44 (0)20 7436 6210 F. +44 (0)20 7436 7261
E. lettings@thecloisteruk.com W. www.thecloisteruk.com



9 Milbank, Westminster

£6,950,000



The Cloister

106 Great Portland Street, London, W1W 6PF
T. +44 (0)20 7436 6210 F. +44 (0)20 7436 7261
E. lettings@thecloisteruk.com W. www.thecloisteruk.com



9 Milbank, Westminster

£6,950,000

Important Notices:

Particulars: These particulars are not an offer or contract, nor part of one. You should not rely on statements by The Cloister in the particulars or by word of mouth or in writing ("information") as being factually accurate about the property, its condition or its value. Neither The Cloister nor any joint agent has any authority to make any representations about the property, and accordingly any information given is entirely without responsibility on the part of the agents, seller(s), lessor(s) or landlord(s). Any areas, measurements or distances are approximate. The text, photographs and plans are for guidance only and are not necessarily comprehensive. Regulations etc: Any reference to alterations to, or use of, any part of the property does not mean that any necessary planning, building regulations or other consent has been obtained. A buyer, lessee or tenant must find out by inspection or in other ways that these matters have been properly dealt with and that all information is correct. All items usually known as tenant's fixtures and fittings whether mentioned or not in these particulars are excl

The Cloister

106 Great Portland Street, London, W1W 6PF
T. +44 (0)20 7436 6210 F. +44 (0)20 7436 7261
E. lettings@thecloisteruk.com W. www.thecloisteruk.com

