



THE CLOISTER

W1 Place, Marylebone

£2,998,000 Leasehold



The Cloister

106 Great Portland Street, London, W1W 6PF
T. +44 (0)20 7436 6210 F. +44 (0)20 7436 7261
E. lettings@thecloisteruk.com W. www.thecloisteruk.com



W1 Place, Marylebone

£2,998,000 Leasehold

Property Description:

This exquisite 2-bedroom, 2-bathroom apartment offers the epitome of luxurious living. This new build residence boasts a timeless elegance that is sure to captivate discerning buyers.

Designed from the inside out, and with an enviable central London location, W1 Place is perfect for the discerning individual, the professional couple and the modern family. The highly crafted quality throughout the building means you'll be feeling that reassuring click with every door you close, and the satisfying sound of your feet on the oak floor. Light pours in through the floor-to-ceiling bay windows, creating a sense of both openness and warmth, while the open-plan living and kitchen areas provide a thoroughly modern space to host your friends or enjoy a cosy night in. This two-bedroom apartment provides luxurious living, designed with you at the heart.

Location:

Positioned conveniently, you have easy access to Paddington, Marylebone, Marble arch, and Baker Street Stations. Its centralised location is contrasted by its leafy surroundings, creating a village-like intimacy. Additionally, the nearby Bond Street Underground provides a gateway to the Elizabeth line, ensuring seamless connections to Heathrow and beyond.

Additional Information

Square Footage: 826 sq.ft.

Leasehold 999 years

Service Charge Estimated £12.30 - 13.30 per sq ft per annum

We have other units available in this development, kindly contact us for more information.

The Cloister

106 Great Portland Street, London, W1W 6PF

T. +44 (0)20 7436 6210 F. +44 (0)20 7436 7261

E. lettings@thecloisteruk.com W. www.thecloisteruk.com



W1 Place, Marylebone

£2,998,000 Leasehold



The Cloister

106 Great Portland Street, London, W1W 6PF
T. +44 (0)20 7436 6210 F. +44 (0)20 7436 7261
E. lettings@thecloisteruk.com W. www.thecloisteruk.com



W1 Place, Marylebone

£2,998,000 Leasehold



The Cloister

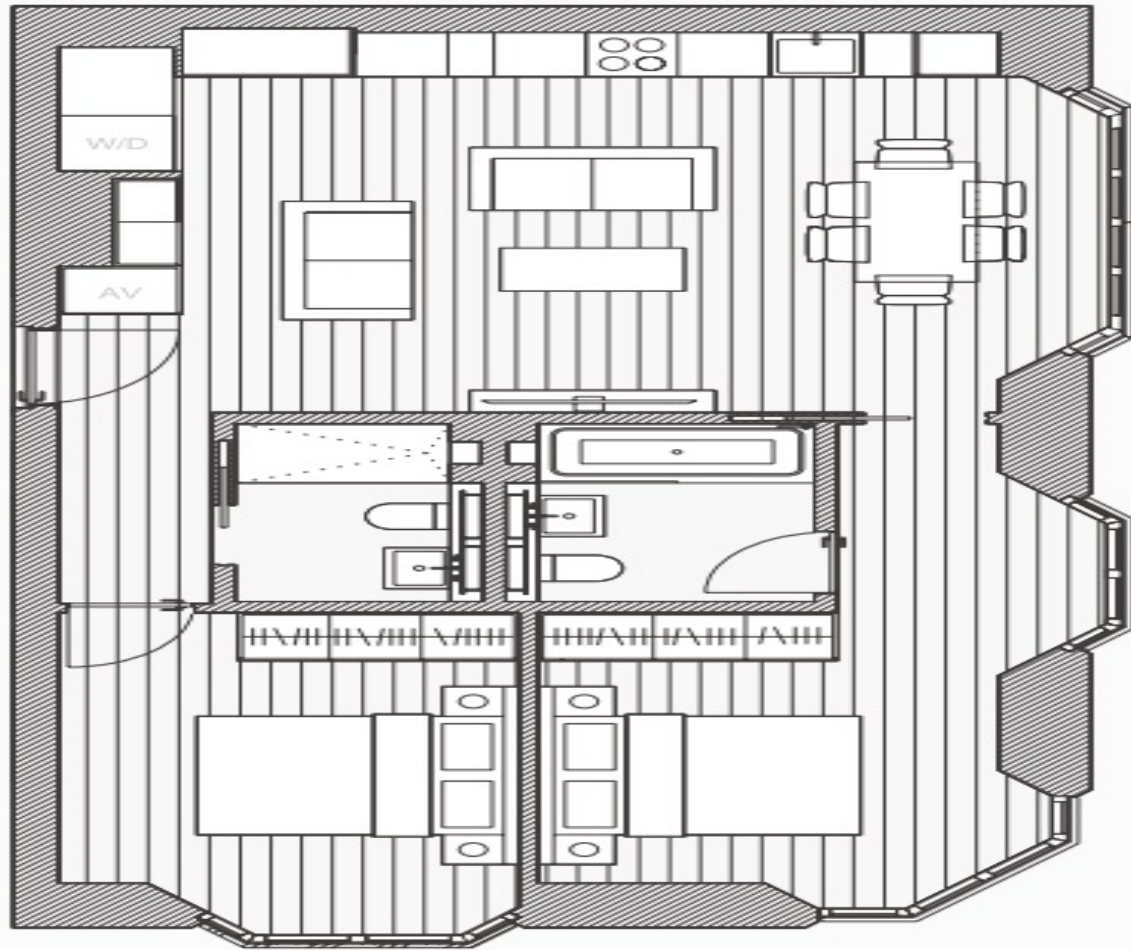
106 Great Portland Street, London, W1W 6PF
T. +44 (0)20 7436 6210 F. +44 (0)20 7436 7261
E. lettings@thecloisteruk.com W. www.thecloisteruk.com



W1 Place, Marylebone

£2,998,000 Leasehold

Living/Kitchen/Dining	6.8m x 5.2m
Master Bedroom	6.5m x 3.7m
Master Bathroom	2.4m x 1.8m
Bedroom 2	4.4m x 3m
Guest Bathroom	2.4m x 1.4m
Total	76.7m²
	826sqft



Important Notices:

Particulars: These particulars are not an offer or contract, nor part of one. You should not rely on statements by The Cloister in the particulars or by word of mouth or in writing ("information") as being factually accurate about the property, its condition or its value. Neither The Cloister nor any joint agent has any authority to make any representations about the property, and accordingly any information given is entirely without responsibility on the part of the agents, seller(s), lessor(s) or landlord(s). Any areas, measurements or distances are approximate. The text, photographs and plans are for guidance only and are not necessarily comprehensive. Regulations etc: Any reference to alterations to, or use of, any part of the property does not mean that any necessary planning, building regulations or other consent has been obtained. A buyer, lessee or tenant must find out by inspection or in other ways that these matters have been properly dealt with and that all information is correct. All items usually known as tenant's fixtures and fittings whether mentioned or not in these particulars are excl

The Cloister

106 Great Portland Street, London, W1W 6PF
T. +44 (0)20 7436 6210 F. +44 (0)20 7436 7261
E. lettings@thecloisteruk.com W. www.thecloisteruk.com

