



W1 Place

2 Bedroom

£2,693,000 Leasehold

204 Great Portland Street, Marylebone


THE
CLOISTER



A101

W1

Place

Description

- Apartment
- 2
- Porter

- 2
- Parked Bathrooms
- Lift

Beds

Property Description:

This exquisite 2-bedroom, 2-bathroom apartment offers the epitome of luxurious living. This new build residence boasts a timeless elegance that is sure to captivate discerning buyers.

Designed from the inside out, and with an enviable central London location, W1 Place is perfect for the discerning individual, the professional couple and the modern family. The highly crafted quality throughout the building means you'll be feeling that reassuring click with every door you close, and the satisfying sound of your feet on the oak floor. Light pours in through the floor-to-ceiling bay windows, creating a sense of both openness and warmth, while the open-plan living and kitchen areas provide a thoroughly modern space to host your friends or enjoy a cosy night in. This two-bedroom apartment provides luxurious living, designed with you at the heart.

Location:

Marylebone stands as a distinctive gem, offering more charm than Fitzrovia and greater diversity than Mayfair. Positioned conveniently, you have easy access to Paddington, Marylebone, Marble arch, and Baker Street Stations. Its centralised location is contrasted by its leafy surroundings, creating a village-like intimacy. Additionally, the nearby Bond Street Underground provides a gateway to the Elizabeth line, ensuring seamless connections to Heathrow and beyond.

Additional Information

Square Footage:	104	947	sq	sq.ft.
Balcony				ft
Leasehold		999		years
Service Charge				Estimate
We		have		other



Accommodation

Comprises:

Kitchen

Living/Dining Room

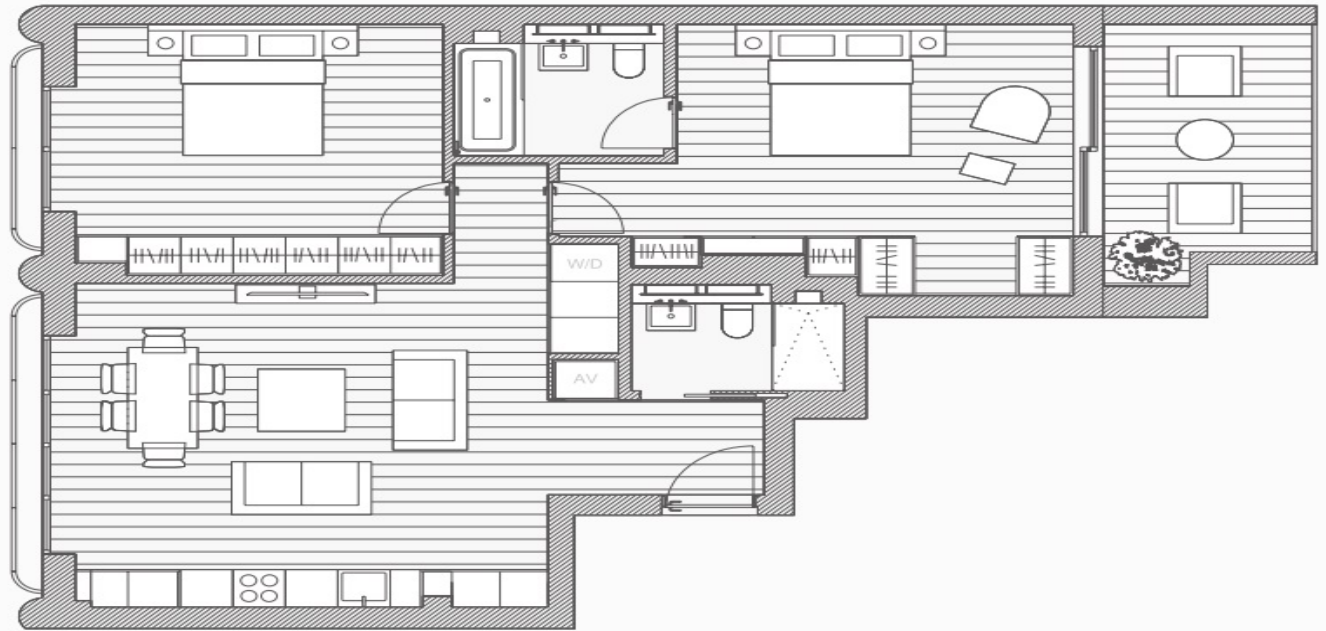
Bedroom 1



Bedroom 2
Bathroom 1
Bathroom 2



Living/Kitchen/Dining	5.4m x 5.2m
Master Bedroom	5.9m x 4.5m
Master Bathroom	2.4m x 1.8m
Bedroom 2	4.2m x 4m
Guest Bathroom	2.4m x 1.4m
Total	88m ²
	947sqft
Terrace	9.7m ²
	104sqft



THE CLOISTER

106 Great Portland Street, London
, W1W 6PF

telephone : +44 (0)20 7436 6210

email : info@thecloisteruk.com

www.thecloisteruk.com

Important

Particulars: These particulars are not an offer or contract, nor part of one. You should not rely on statements by The Cloister in the particulars or by word of mouth or in writing ("information") as being factually accurate about the property, its condition or its value. Neither The Cloister nor any joint agent has any authority to make any representations about the property, and accordingly any information given is entirely without responsibility on the part of the agents, seller(s), lessor(s) or landlord(s). Any areas, measurements or distances are approximate. The text, photographs and plans are for guidance only and are not necessarily comprehensive. Regulations etc: Any reference to alterations to, or use of, any part of the property does not

Notices: